



RENOVATION OF  
**PARK PLACE ALS**

2180 NORTHLAKE PARKWAY  
TUCKER, GA 30084

**TA** Design Group,  
pub 81226 Chamblee, GA 30626  
Inc. [tdg.com](http://tdg.com)  
864-553-2474

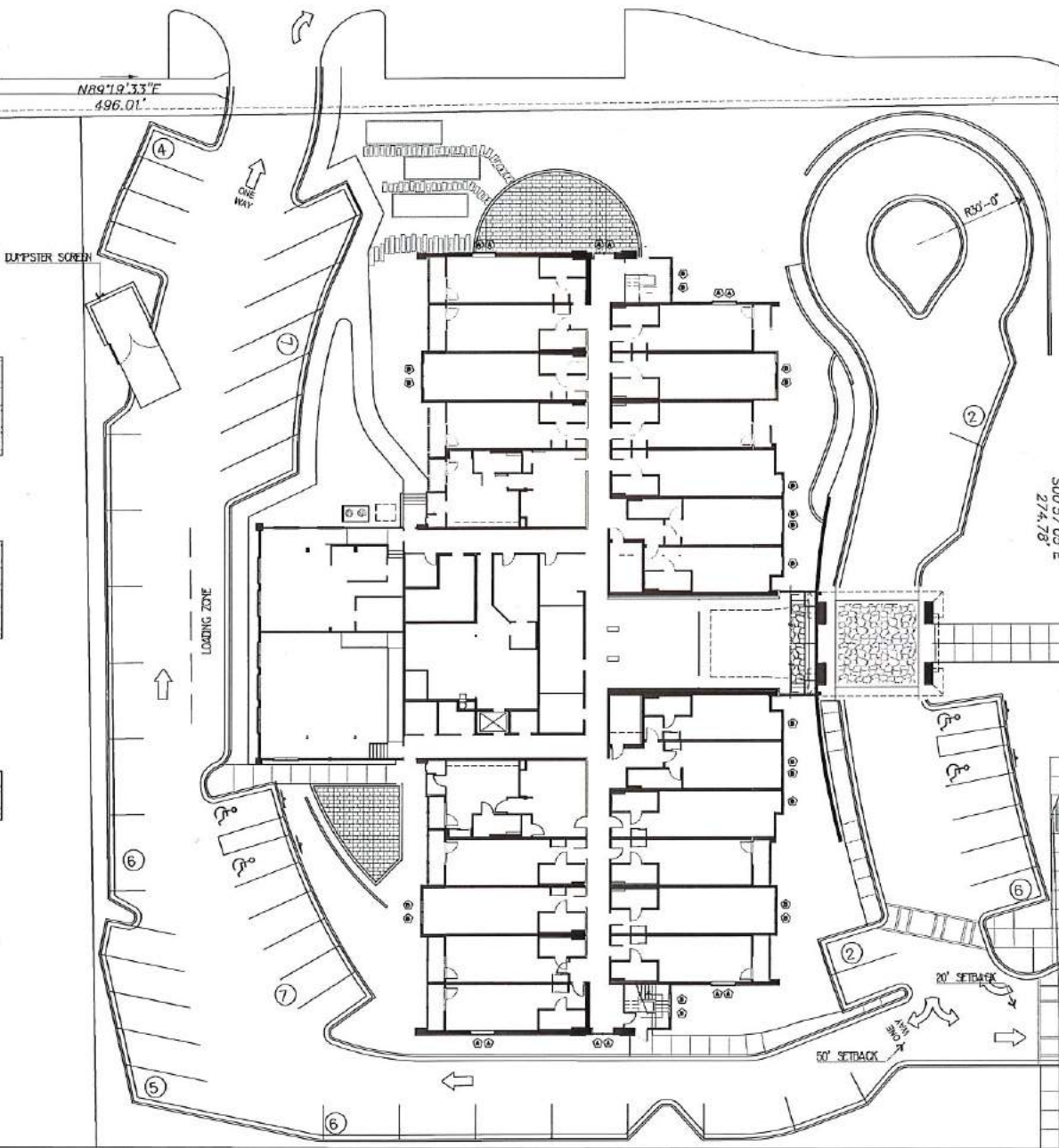
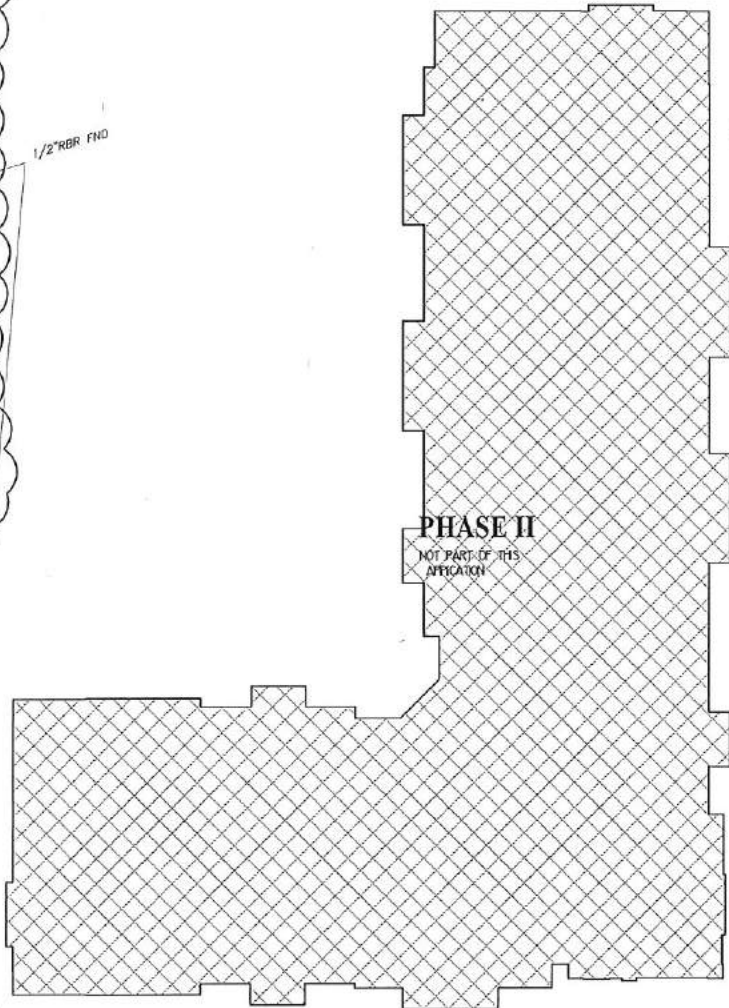
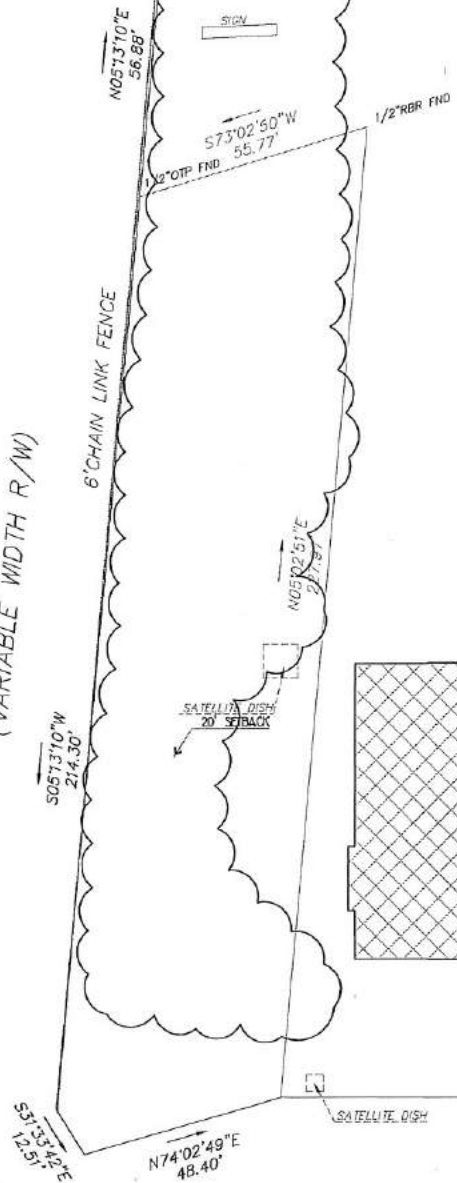
**REVISION**

CITY OF TUCKER

DEC 19 2016

RECEIVED

I-285  
(VARIABLE WIDTH R/W)



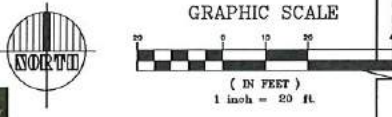
NORTH LAKE PARKWAY (80' RIGHT)

- SUITE 2,000
- SUITE 2,000
- 30' MAX. BUILDING SETBACK
- SUITE 2,000
- SUITE 2,000
- SUITE 2,000
- SUITE 2,000
- SUITE 2,000
- SUITE 2,000
- SUITE 2,000
- SUITE 2,000

SITE PLAN

SITE DATA:

ACREAGE:	
TOTAL	3.186AC
PHASE I	1.622AC
PARKING:	
AVAILABLE	45
REQUIRED @ 0.5RM	36
ROOM COUNT	
DENSITY	44.4C
SQUARE FOOTAGE	
FIRST FLOOR	28,258
SECOND FLOOR	29,463
THIRD FLOOR	19,266
TOTAL	66,227
ZONING	
SITE	O1
SURROUNDING PROPERTY	O1
UTILITIES	
SEWER	AVAILABLE
WATER	AVAILABLE
POWER	AVAILABLE
GREEN SPACE	
PERVIOUS AREA	18155.15F 25.7%
	92437.45F



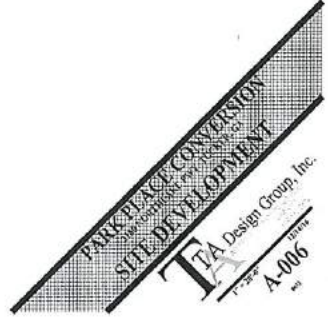
RENOVATION LOCATION

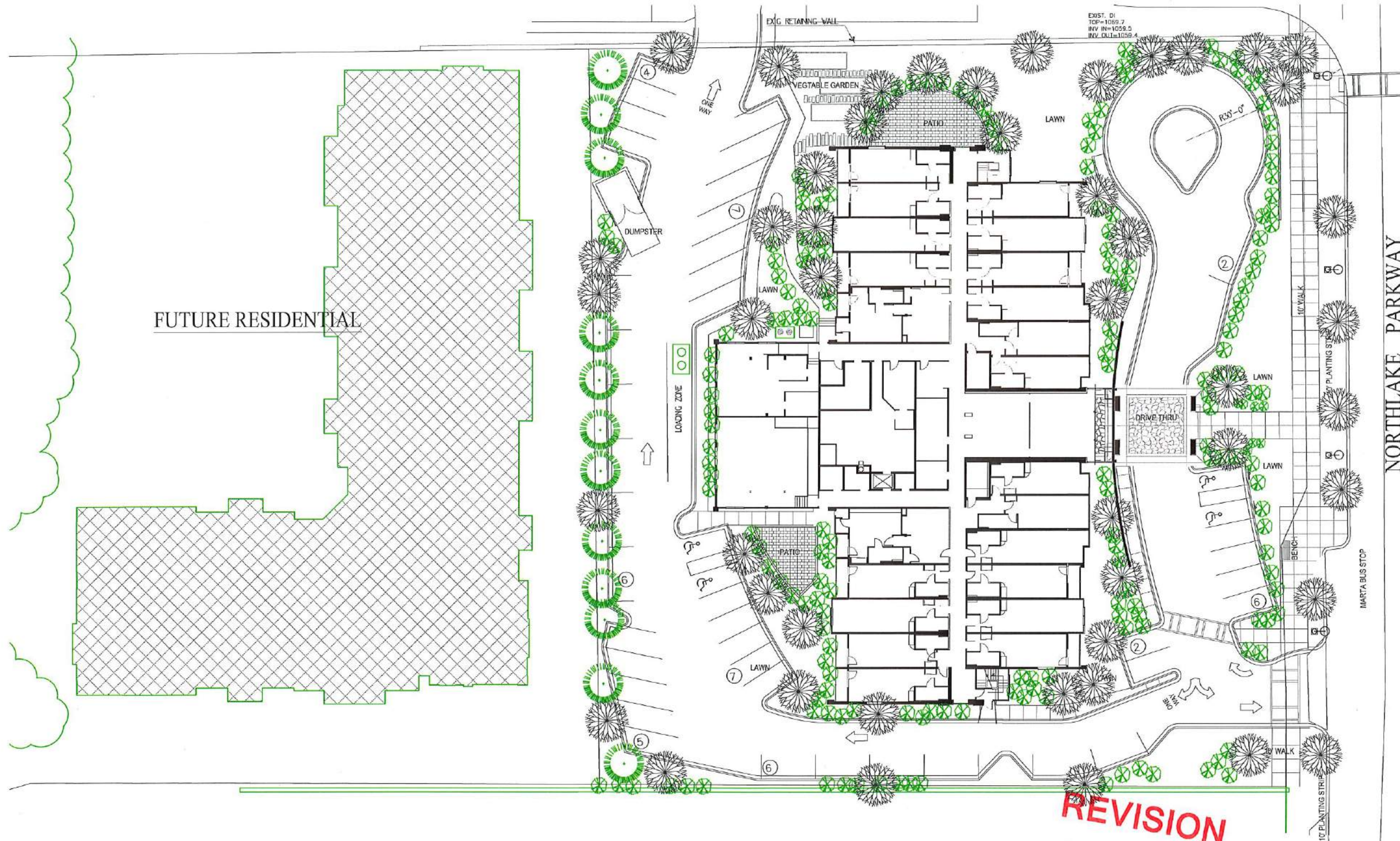
REVISION

CITY OF TUCKER

DEC 19 2016

RECEIVED





FUTURE RESIDENTIAL




SITE PLAN

**REVISION**

CITY OF TUCKER

DEC 19 2016

RECEIVED

-  BROMLEAF TREES
-  CONIFER TREES
-  SHRUBS & UNDERPLANTINGS
-  STREET LIGHT

**PARK PLACE**