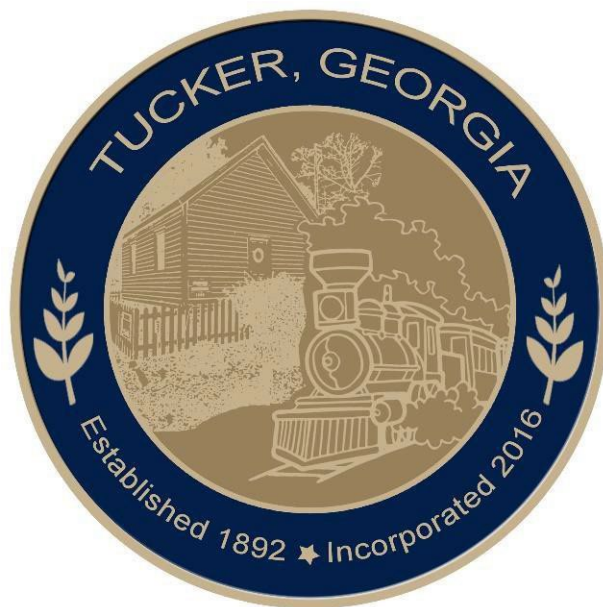


City of Tucker

Invitation to Bid  
ITB # 2025-012

# STORMWATER SYSTEM HYDROVAC CLEANING AND VIDEO CAPTURE



## BID MANUAL

City of Tucker  
1975 Lakeside Parkway, Suite 350  
Tucker, Georgia 30234

**City of Tucker Invitation to Bid**  
**ITB #2025-012**  
**STORMWATER SYSTEM HYDROVAC CLEANING AND VIDEO**  
**CAPTURE**

**INVITATION:** The City of Tucker, Georgia requests that interested parties submit bids for the Stormwater System Hydrovac Cleaning and Video Capture. Bids will be accepted until the date and time listed below and will be awarded to the lowest responsible and responsive bidder whose bid, conforming with all the material terms and conditions of the ITB, is the lowest in price. Addenda and updates to this bid manual will be posted on the City of Tucker website <http://tuckerga.gov/bids>, the DOAS/Georgia Procurement Registry Website or may be requested by email [procurement@tuckerga.gov](mailto:procurement@tuckerga.gov).

<b>BID ACTIVITY SCHEDULE</b>	
Invitation to Bid Issued	September 2 ,2025
Pre-Bid Conference	N/A
Deadline for Questions	September 16, 2025, at 1:00 p.m. (EST)
Responses to Questions Posted (Addenda)	September 19, 2025
<b>Bid Deadline</b>	<b>October 2, 2025, at 1:00 p.m. (EST)</b>
Award at Council Meeting	October 27, 2025 (Tentative)
Completion from Notice to Proceed	120 Calendar Days

**SCOPE OF WORK:** Refer to Exhibit A.

**PRE-BID CONFERENCE:** A pre-bid conference will not be scheduled for this project.

**QUESTIONS:** Submit all questions in writing to [procurement@tuckerga.gov](mailto:procurement@tuckerga.gov). Reference ITB #2025-012 in the subject line of the email.

**ADDENDA:** Responses to the questions received will be by addenda and will be posted on the City website [www.tuckerga.gov/bids](http://www.tuckerga.gov/bids). The signed acknowledgement issued with each addendum must be submitted with the bid. It is the vendors responsibility to verify if any addenda were created.

**SUBMITTAL REQUIREMENTS:** Vendor shall submit ITB Response electronically to [procurement@tuckerga.gov](mailto:procurement@tuckerga.gov) so that is received no later than October 2, 2025 at 1:00pm EST with the subject line “Submittal: ITB #2025-012”. The email must contain the vendor’s contact information. Submittals should be one PDF file and named “ <Company Name>.ITB 2025-012.Bid Submittal.pdf”. The submittal email will be opened to confirm receipt of the submittal; however, the attached PDF file will remain unopened until the public opening.

**BID OPENING:** Bids will be publicly opened at City Hall located at 1975 Lakeside Parkway, Tucker, GA, Suite 350 at 1:05pm EST on Thursday, October 2, 2025.

**BID SUBMITTALS:** A listing of submittals received prior to the bid deadline will be posted on the City website [www.tuckerga.gov/bids](http://www.tuckerga.gov/bids) following the opening of the bids.

**BID DOCUMENT SUBMITTAL REQUIREMENTS:**

1. Unit Price Cost Proposal Form – (Provided)
2. W-9 Form (provided)
3. Certificate of Current Liability, Worker's Compensation and Vehicle Insurance
4. Notarized Contractor Affidavit Form (Provided)
5. Notarized Bid Bond Form (Provided)
6. Proposed List of Subcontractors Form (Provided)
7. Related Experience and References Form (Provided)
8. Acknowledgement of Addendum issued with each Addendum.
9. Notarized Oath of Non-Collusion (Provided)
10. Contact Information Form (Provided)

All responses must be received electronically by the Bid Deadline. (Addenda will show any schedule updates). No bids will be received orally or by phone. Late bids will not be considered. Bids received after the bid deadline will be filed unopened. The City of Tucker reserves the right to reject any and all bids or any part, to waive any formalities to make an award and to re-advertise in the best interest of the City. The City reserves the right to consider past performance in determining the responsibility of bidders.

The city reserves the right to negotiate pricing and may, in its discretion, award a contract to the lowest responsible and responsive bidder submitting the proposal.

# ITB #2025-012 STORMWATER SYSTEM HYDROVAC CLEANING AND VIDEO CAPTURE

## Exhibit A: Scope of Work

### PURPOSE, INTENT AND PROJECT DESCRIPTION

The City of Tucker (City), requests that interested parties submit formal electronic bids for the cleaning of conduits and storm structures, as well as video capture at 18 locations.

The complete scope, specifications, and other relevant information for ITB 2025-012 is available for download on the City of Tucker website: [www.tuckerga.gov/bids](http://www.tuckerga.gov/bids) or request via email to [procurement@tuckerga.gov](mailto:procurement@tuckerga.gov).

### SCOPE OF WORK

The following table summarizes the locations and approximate sizes, lengths and depths from GIS sources:

FY 2026 Cleaning and Video Capture of Existing Pipe Conditions 6						
	Location	# Structures	Cumulative Depth of Structures	Length of Pipe	Size of Pipe	Pipe Material
		EA	FT	LF	IN	
48	4928 CHAMBLEE TUCKER RD	2	8	55	18	RCP
49	2101 BROCKETT RD	2	4	12	15	RCP
50	4214 SMITHSONIA COURT	2	6	125	18	CMP
51	3018 PLEASANTDALE ROAD	2	6	10	15	RCP
52	2593 LAKE ERIN DR	2	8	40	18	BCCMP
53	1590 LILBURN STONE MOUNTAIN ROAD	3	8	280	18	RCP
55	3300 MONTREAL INDUSTRIAL WAY	2	12	40	24	BCCMP
57	2144 FLOWERS ROAD	2	2	40	24	CMP
59	4000 HENDERSON PARK ROAD	3	10	72	18	BCCMP
60	1526 SILVER HILL ROAD	4	10	80	30	BCCMP
61	1604 JULIETTE ROAD	2	5	95	18	CMP
62	5735 REDCOAT RUN	2	8	35	18	CMP
64	6258 OLD STONE MOUNTAIN ROAD	2	6	70	18	BCCMP
65	1584 AVON AVENUE	3	12	210	18	CMP
66	1315 1455 OAKENGATE DRIVE	4	12	75	15	CMP
68	4594 OSWOOD COURT	2	14	25	18	BCCMP
75	5682 EAST PONCE DE LEON AVE	4	10	45	18	RCP
77	2670 TUCKER VALLEY ROAD	3	12	190	18	BCCMP

The work required under this contract includes furnishing materials, qualified labor, equipment, traffic control, erosion control, and site restoration.

1. Removal of sediment, debris and trash from structures and conduits.
2. Haul off of removed material.
3. CCTV of segment after cleaning.
4. Clean work area.

The prospective bidder is advised to visit the site.

The city will obtain all necessary easements and rights of entry which may be necessary to execute the work.

Please refer to the accompanying exhibits for more detailed information on the scope of work and locations of structures and conduits. In addition, a link will be provided in this document and in necessary addenda sent to the interested party that has background information including but not limited to photographs, videos and reports.

#### [TASK ORDER 38 BACKGROUND FILES](#)

#### **TV INSPECTION AND JET-VAC CLEANING**

- CCTV of conduits and structures will be conducted after the required cleaning and will include an electronic media file and a condition report.
- CCTV Standard Operating Procedures:
  - a. Contractor must use a self-propelled, color, pan-and-tilt camera system capable of:
    - Continuous viewing of pipe interior.
    - Zoom for close-up examination of defects.
    - Record high-resolution video with digital distance counter.
  - b. Inspect each pipe segment joint-by-joint, noting:
    - Joint integrity and separations with 360-degree view of all pipe joints
    - Cracks, fractures, or surface spalling.
    - Deformities
    - Infiltration and exfiltration evidence.
    - Water Sag
    - Corrosion or wall deterioration.
    - Root intrusion or obstructions.
  - c. Provide defect coding per **NASSCO PACP** standards (or City-approved equivalent).
  - d. Document and map all deficiencies with exact location references.
- CCTV will be paid on a linear foot basis and will be adjusted based on accessibility as necessary.
- Visual Inspection Pictures will be provided as a lump sum by location. The number necessary and type of pictures are intended to show conditions and actions that would support the quantities and line items charged under the contract.

- Hydro-Excavation is to be charged only for time actually at the site and deployed at the site, not for travel time.

### **STORM LINE CLEANING**

- These line items contemplate the use of high velocity water jetting of silty and/or sandy sediment.
- These line items include the cost of capture and haul off of any water and suspended sediment removed from the cleaned conduits and structures.
- The contractor is responsible for providing their own water source. Any water taken from public hydrants must be metered through the utility provider.
- The contractor must contain all removed material in leak-proof containers, transport to an approved disposal facility or landfill licensed to receive such waste, and provide weigh tickets or disposal receipts with final report.

### **SPECIALTY STORM LINE CLEANING**

- For large debris, Specialty Storm Line Cleaning is paid on a linear foot basis of the distance upon which the material is moved after standard storm line cleaning (items 4 and 5). For root cleaning, the linear foot basis is the length of pipe affected with roots and length of pipe over which a root removal tool is utilized after standard storm line cleaning is employed.
- The determination for Specialty Cleaning deployment and its quantity will be determined in conjunction with and subsequent to the standard storm line cleaning.

### **EROSION CONTROL**

- The alternative Type A Silt Fence specified is a double row of silt fence with a haybale placed between them. The silt fence will be deployed on outfalls for potential discharge not captured to be filtered.

### **REMOVE, SET ASIDE, AND RESET DRAINAGE STRUCTURE CONCRETE LID**

- This line item is intended to pay for the action of making more accessible for cleaning of structures and conduits drainage structures that have a monolithic concrete lid. This line item is not for demolition and replacement of the lid, but for removing it, setting it aside during cleaning activities, then resetting it in its original location.
- The removal of the concrete lid is at the discretion of the contractor only. If the contractor can perform the duties without having to remove such lid, then the contractor is not required as a condition of the contract to remove the lid.
- The contractor takes liability in damage to the lid which may occur in removing and setting aside and shall replace the lid under this line item if the monolithic concrete lid is unable to be reset.

## **GENERAL CONDITIONS**

The contractor shall execute the work according to and meet the requirements of the following:

- Maintain access to residential properties as necessary by detours or covering of the work area when not mobilized.
- Furnish, install, maintain, and remove all necessary traffic signs, barricades, lights, signals, cones and other traffic control devices, and all flagging and other means of traffic protection and guidance as required by Special Provision 150 of the Georgia Department of Transportation. Such work shall be considered incidental to the overall contract, and no additional compensation will be made.
- Be responsible for calling in and identifying utility locations. The City shall be notified of any potential utility conflicts.
- Specifications in accord with Georgia Department of Transportation Standards, City of Tucker Ordinances and Regulations, OSHA standards and guidelines, and Any other applicable codes, laws and regulations including but not limited to Section 45- 10-20 through 45-10-28 of the Official Code of Georgia Annotated, Title VI of the Civil Rights Act, Drug-Free Workplace Act, and all applicable requirements of the Americans with Disabilities Act of 1990.
- Mobilization will be defined under Section 151 of the 2021 Standard Specifications of the Georgia Department of Transportation. One mobilization shall include the cost of mobilization for all teams and subcontractors used by and at the discretion of the Contractor.
- Out of scope hourly labor shall be paid only upon the prior approval of the city upon confirmation that the work performed is outside of the scope of the original contract.
- Report to the City of Tucker Public Works Director, Deputy Public Works Director, and the Stomrwater Supervisor. The city reserves the right to substitute staff at any time during the contract period.

The contractor will be responsible for providing all labor, materials, and equipment necessary to perform the work. This is a unit price bid. Payment will be made based on actual work completed.

The contractor is responsible for inspecting the jobsite prior to submitting a bid. No change orders will be issued for differing site conditions.

The successful bidder must have verifiable experience at construction of similar projects in accordance with these specifications. Bidder shall provide at least three examples and reference information (including company name, project name, contact name, phone number and email address) demonstrating experience successfully completing projects of similar scope.

5% retainage will be withheld from the total amount due the contractor until Final Acceptance of work is issued by the City. City staff will inspect the work as it progresses.

## **PROSECUTION AND PROGRESS**

The Contractor will mobilize with sufficient forces such that all construction identified as part of this contract shall be substantially completed by 120 calendar days. The contractor will be considered substantially complete when all work required by this contract has been completed.

The normal workday for this project shall be 8:00AM to 7:00PM and the normal workweek shall be Monday through Friday. The City will consider extended workdays or workweeks upon written request by the Contractor on a case-by-case basis. No work will be allowed on national holidays (i.e. Memorial Day, July 4th, Labor Day, etc.).

The work will require the bidder to provide all labor, administrative forces, equipment, materials and other incidental items to complete all required work. The City shall perform a Final Inspection upon substantial completion of the work. The contractor will be allowed to participate in the Final Inspection. All repairs shall be completed by the contractor at the contractor's expense prior to issuance of Final Acceptance.

The contractor shall be assessed liquidated damages in the amount of \$500.00 per calendar day for any contract work that is not completed by 120 calendar days. Liquidated damages shall be deducted from the 5% retainage held by the City. The contractor will also be assessed liquidated damages in the amount of \$500.00 per calendar day for not completing any required Punch List work within 45 calendar days.

The contractor shall provide all material, labor, and equipment necessary to perform the work without delay until final completion.

#### **PERMITS AND LICENSES**

The contractor shall procure all permits and licenses, pay all charges, taxes and fees, and give all notices necessary and incidental to the due and lawful prosecution of the work.

#### **BONDING AND INSURANCE REQUIREMENTS**

No bid may be withdrawn for a period of ninety (90) days after the bid deadline/opening.

All bids must be accompanied by a Bid Bond of a reputable bonding company authorized to do business in the State of Georgia, in an amount equal to at least five percent (5%) of the total amount of the bid.

Upon Notice of Award, the successful contractor shall submit a Performance Bond payable to the City of Tucker in the amount of 100% of the total contract price. The successful contractor shall also submit a Payment Bond in the amount of 100% pursuant to O.C.G.A. § 36- 91-70 and 90.

Upon Notice of Award, the successful contractor shall procure and maintain the following insurance policies:

1. Commercial General Liability coverage at their sole cost and expense with limits of not less than \$3,000,000 in combined single limits for bodily injury and/or property damage per occurrence, and such policies shall name the City of Tucker as an additional named insured.
2. Statutory Workers Compensation and Employers Liability Insurance with limits of not less than \$1,000,000, which insurance must contain a waiver of subrogation against the City of Tucker and its affiliates.
3. Commercial automobile liability insurance with limits of not less than \$1,000,000 combined single limit for bodily injury and/or property damage per occurrence, and such policies shall name the City of Tucker as an additional named insured.



### **EXISTING CONDITIONS / DEVIATION OF QUANTITIES**

All information given in this ITB concerning quantities, scope of work, existing conditions, etc. is for information purposes only. It is the Contractor's responsibility to inspect the project site to verify existing conditions and quantities prior to submitting their bid. This is a Unit Price bid and no payment will be made for additional work without prior written approval from the City. At no time will Contractor proceed with work outside the prescribed scope of services for which additional payment will be requested without the written authorization of the City.

The City reserves the right to add, modify, or delete quantities. The City may also elect to add or eliminate certain work locations at its discretion. The Contractor will not be entitled to any adjustment of unit prices or any other form of additional compensation because of adjustments made to quantities and/or work locations. Contractor will be paid for actual in-place quantities completed and accepted for pay items listed in the Bid Schedule. All other work required by this ITB, plans, specs, standards, etc. but not specifically listed in the Bid Schedule shall be considered "incidental work" and included in the bid prices for items on the Bid Schedule.

### **TRAFFIC CONTROL**

The contractor shall, at all times, conduct their work so as to assure the least possible obstruction of traffic. The safety and convenience of the general public and the residents along the roadway and the protection of persons and property shall be provided for by the contractor as specified in the State of Georgia, Department of Transportation Standard Specifications Sections 104.05, 107.09 and 150.

Traffic whose origin and destination is within the limits of the project shall be provided ingress and egress at all times unless otherwise specified by the City. The ingress and egress includes entrances and exits via driveways at various properties, and access to the intersecting roads and streets. The contractor shall maintain sufficient personnel and equipment (including flaggers and traffic control signing) on the project at all times, particularly during inclement weather, to ensure that ingress and egress are safely provided when and where needed.

Two-way traffic shall be maintained at all times, unless otherwise specified or approved by the City. In the event of an emergency situation, the Contractor shall provide access to emergency vehicles and/or emergency personnel through or around the construction area. Any pavement damaged by such an occurrence will be repaired by the Contractor at no additional cost to the City.

The contractor shall furnish, install and maintain all necessary and required barricades, signs and other traffic control devices in accordance with the MUTCD and DOT specifications, and take all necessary precautions for the protection of the workers and safety of the public.

### **CLEANUP**

All restoration and clean-up work shall be performed daily. Operations shall be suspended if the contractor fails to accomplish restoration and clean-up within an acceptable period of time. Asphalt and other debris shall be removed from gutters, sidewalks, yards, driveways, etc. Failure to perform clean-up activities may result in suspension of the work. Milling operation shall be followed immediately by clean-up at which the contractor is to provide power brooms, vacuum sweepers, power blowers, or other means to remove loose debris or dust. Do not allow dust control to restrict visibility of passing traffic or to disrupt adjacent property owners. All pavement areas shall be clean and dry prior to placing tack coat, asphaltic concrete or other materials.

**SAFETY**

Beginning with mobilization and ending with acceptance of work, the contractor shall be responsible for providing a clean and safe work environment at the project site. The contractor shall comply with all OSHA regulations as they pertain to this project.

# ITB 2025-012 STORMWATER SYSTEM HYDROVAC CLEANING AND VIDEO CAPTURE COST PROPOSAL

LOCATION 48: 4928 CHAMBLEE TUCKER RD				
Item	Approx Allowed Units	Unit	Unit Price	Projected Cost
<b>General Conditions</b>				
Mobilization	1	EA		
Out of Scope Work, Foreman	2	HR		
Out of Scope Work, Laborer	2	HR		
<b>Traffic Control</b>				
Traffic Control Minor 1 – Includes Continuous Crew of 2 Flagmen	2	Per Day		
<b>TV Inspection and Jet-Vac Cleaning</b>				
TV Storm Lines (includes DVD & Report)	55	LF		
Visual Inspection (Pictures), per Project (During Construction)	1	EA		
Hydro-Excavation complete (onsite hours only)	16	Per Hour		
<b>Storm Line Cleaning (25% full or greater)</b>				
18" PIPE - Cleaning 25% full or greater	55	LF		
<b>Specialty Storm Line Cleaning,</b> Applicable to heavy roots, Large diameter rocks, large debris, etc				
12" to 36" PIPE	40	LF		
<b>Earthwork &amp; Grading</b>				
Debris Removal	3	CY		
<b>Miscellaneous Items</b>				
Remove, Set Aside and Reset Drainage Structure Concrete Lid	2	EA		
<b>LOCATION 48: 4928 CHAMBLEE TUCKER RD SUBTOTAL</b>				

# ITB 2025-012 STORMWATER SYSTEM HYDROVAC CLEANING AND VIDEO CAPTURE COST PROPOSAL

LOCATION 49: 2101 BROCKETT RD				
Item	Approx Allowed Units	Unit	Unit Price	Projected Cost
<b>General Conditions</b>				
Mobilization	1	EA		
Out of Scope Work, Foreman	1	HR		
Out of Scope Work, Laborer	2	HR		
<b>Traffic Control</b>				
Traffic Control Minor 1 – Includes Continuous Crew of 2 Flagmen	1	Per Day		
Traffic Control Major - Included Road Closure Detours, Signs	1	EA		
<b>TV Inspection and Jet-Vac Cleaning</b>				
TV Storm Lines (includes DVD & Report)	12	LF		
Visual Inspection (Pictures), per Project (During Construction)	1	EA		
Hydro-Excavation complete (onsite hours only)	10	Per Hour		
<b>Storm Line Cleaning (25% full or greater)</b>				
15" PIPE - Cleaning 25% full or greater	12	LF		
<b>Specialty Storm Line Cleaning, Applicable to heavy roots, Large diameter rocks, large debris, etc</b>				
12" to 36" PIPE	10	LF		
<b>Earthwork &amp; Grading</b>				
Debris Removal	1	CY		
<b>Erosion Control</b>				
Install, Maintain & Remove Type A Silt Fence - Alternative	10	LF		
<b>Miscellaneous Items</b>				
Remove, Set Aside and Reset Drainage Structure Concrete Lid	1	EA		
<b>LOCATION 49: 2101 BROCKETT RD SUBTOTAL</b>				

**ITB 2025-012 STORMWATER SYSTEM HYDROVAC CLEANING AND  
VIDEO CAPTURE  
COST PROPOSAL**

LOCATION 50: 4214 SMITHSONIA CT				
Item	Approx Allowed Units	Unit	Unit Price	Projected Cost
<b>General Conditions</b>				
Mobilization	1	EA		
Out of Scope Work, Foreman	2	HR		
Out of Scope Work, Laborer	2	HR		
<b>Traffic Control</b>				
Traffic Control Minor 2 – Includes Cones and Signage	2	Per Day		
<b>TV Inspection and Jet-Vac Cleaning</b>				
TV Storm Lines (includes DVD & Report)	125	LF		
Visual Inspection (Pictures), per Project (During Construction)	1	EA		
Hydro-Excavation complete (onsite hours only)	16	Per Hour		
<b>Storm Line Cleaning (25% full or greater)</b>				
18" PIPE - Cleaning 25% full or greater	125	LF		
<b>Specialty Storm Line Cleaning,</b> Applicable to heavy roots, Large diameter rocks, large debris, etc				
12" to 36" PIPE	100	LF		
<b>Earthwork &amp; Grading</b>				
Debris Removal	6	CY		
<b>Erosion Control</b>				
Install, Maintain & Remove Type A Silt Fence - Alternative	20	LF		
<b>Miscellaneous Items</b>				
Remove, Set Aside and Reset Drainage Structure Concrete Lid	1	EA		
<b>LOCATION 50: 4214 SMITHSONIA CT SUBTOTAL</b>				

# ITB 2025-012 STORMWATER SYSTEM HYDROVAC CLEANING AND VIDEO CAPTURE COST PROPOSAL

LOCATION 51: 3018 PLEASANTDALE RD				
Item	Approx Allowed Units	Unit	Unit Price	Projected Cost
<b>General Conditions</b>				
Mobilization	1	EA		
Out of Scope Work, Foreman	2	HR		
Out of Scope Work, Laborer	2	HR		
<b>Traffic Control</b>				
Traffic Control Minor 1 – Includes Continuous Crew of 2 Flagmen	1	Per Day		
Traffic Control Major - Included Road Closure Detours, Signs	1	EA		
<b>TV Inspection and Jet-Vac Cleaning</b>				
TV Storm Lines (includes DVD & Report)	10	LF		
Visual Inspection (Pictures), per Project (During Construction)	1	EA		
Hydro-Excavation complete (onsite hours only)	10	Per Hour		
<b>Storm Line Cleaning (25% full or greater)</b>				
15" PIPE - Cleaning 25% full or greater	10	LF		
<b>Specialty Storm Line Cleaning, Applicable to heavy roots, Large diameter rocks, large debris, etc</b>				
12" to 36" PIPE	10	LF		
<b>Earthwork &amp; Grading</b>				
Debris Removal	1	CY		
<b>Erosion Control</b>				
Install, Maintain & Remove Type A Silt Fence - Alternative	20	LF		
<b>Miscellaneous Items</b>				
Remove, Set Aside and Reset Drainage Structure Concrete Lid	1	EA		
<b>LOCATION 51: 3018 PLEASANTDALE RD SUBTOTAL</b>				

**ITB 2025-012 STORMWATER SYSTEM HYDROVAC CLEANING AND  
VIDEO CAPTURE  
COST PROPOSAL**

LOCATION 52: 2593 LAKE ERIN DR				
Item	Approx Allowed Units	Unit	Unit Price	Projected Cost
<b>General Conditions</b>				
Mobilization	1	EA		
Out of Scope Work, Foreman	1	HR		
Out of Scope Work, Laborer	2	HR		
<b>Traffic Control</b>				
Traffic Control Minor 2 – Includes Cones and Signage	1	Per Day		
<b>TV Inspection and Jet-Vac Cleaning</b>				
TV Storm Lines (includes DVD & Report)	40	LF		
Visual Inspection (Pictures), per Project (During Construction)	1	EA		
Hydro-Excavation complete (onsite hours only)	10	Per Hour		
<b>Storm Line Cleaning (less than 25% full)</b>				
18" PIPE - Cleaning less than 25% full	40	LF		
<b>Specialty Storm Line Cleaning, Applicable to heavy roots, Large diameter rocks, large debris, etc</b>				
12" to 36" PIPE	30	LF		
<b>Earthwork &amp; Grading</b>				
Debris Removal	2	CY		
<b>Miscellaneous Items</b>				
Remove, Set Aside and Reset Drainage Structure Concrete Lid	2	EA		
<b>LOCATION 52: 2593 LAKE ERIN DR SUBTOTAL</b>				

**ITB 2025-012 STORMWATER SYSTEM HYDROVAC CLEANING AND  
VIDEO CAPTURE  
COST PROPOSAL**

<b>LOCATION 53: 1590 LILBURN STONE MOUNTAIN RD</b>				
<b>Item</b>	<b>Approx Allowed Units</b>	<b>Unit</b>	<b>Unit Price</b>	<b>Projected Cost</b>
<b>General Conditions</b>				
Mobilization	1	EA		
Out of Scope Work, Foreman	2	HR		
Out of Scope Work, Laborer	2	HR		
<b>Traffic Control</b>				
Traffic Control Minor 1 – Includes Continuous Crew of 2 Flagmen	4	Per Day		
<b>TV Inspection and Jet-Vac Cleaning</b>				
TV Storm Lines (includes DVD & Report)	280	LF		
Visual Inspection (Pictures), per Project (During Construction)	1	EA		
Hydro-Excavation complete (onsite hours only)	32	Per Hour		
<b>Storm Line Cleaning (25% full or greater)</b>				
18" PIPE - Cleaning 25% full or greater	280	LF		
<b>Specialty Storm Line Cleaning, Applicable to heavy roots, Large diameter rocks, large debris, etc</b>				
12" to 36" PIPE	220	LF		
<b>Earthwork &amp; Grading</b>				
Debris Removal	14	CY		
<b>Erosion Control</b>				
Install, Maintain & Remove Type A Silt Fence - Alternative	20	LF		
<b>Miscellaneous Items</b>				
Remove, Set Aside and Reset Drainage Structure Concrete Lid	2	EA		
<b>LOCATION 53: 1590 LILBURN STONE MOUNTAIN RD SUBTOTAL</b>				



**ITB 2025-012 STORMWATER SYSTEM HYDROVAC CLEANING AND  
VIDEO CAPTURE  
COST PROPOSAL**

<b>LOCATION 55: 3300 MONTREAL INDUSTRIAL WAY</b>				
<b>Item</b>	<b>Approx Allowed Units</b>	<b>Unit</b>	<b>Unit Price</b>	<b>Projected Cost</b>
<b>General Conditions</b>				
Mobilization	1	EA		
Out of Scope Work, Foreman	4	HR		
Out of Scope Work, Laborer	4	HR		
<b>Traffic Control</b>				
Traffic Control Minor 1 – Includes Continuous Crew of 2 Flagmen	2	Per Day		
<b>TV Inspection and Jet-Vac Cleaning</b>				
TV Storm Lines (includes DVD & Report)	40	LF		
Visual Inspection (Pictures), per Project (During Construction)	1	EA		
Hydro-Excavation complete (onsite hours only)	16	Per Hour		
<b>Storm Line Cleaning (25% full or greater)</b>				
24" PIPE - Cleaning 25% full or greater	40	LF		
<b>Specialty Storm Line Cleaning, Applicable to heavy roots, Large diameter rocks, large debris, etc</b>				
12" to 36" PIPE	30	LF		
<b>Earthwork &amp; Grading</b>				
Debris Removal	4	CY		
<b>Erosion Control</b>				
Install, Maintain & Remove Type A Silt Fence - Alternative	40	LF		
<b>Miscellaneous Items</b>				
Remove, Set Aside and Reset Drainage Structure Concrete Lid	2	EA		
<b>LOCATION 55: 3300 MONTREAL INDUSTRIAL WAY SUBTOTAL</b>				

**ITB 2025-012 STORMWATER SYSTEM HYDROVAC CLEANING AND  
VIDEO CAPTURE  
COST PROPOSAL**

<b>LOCATION 57: 2144 FLOWERS RD</b>				
<b>Item</b>	<b>Approx Allowed Units</b>	<b>Unit</b>	<b>Unit Price</b>	<b>Projected Cost</b>
<b>General Conditions</b>				
Mobilization	1	EA		
<b>Traffic Control</b>				
Traffic Control Minor 2 – Includes Cones and Signage	1	Per Day		
<b>TV Inspection and Jet-Vac Cleaning</b>				
TV Storm Lines (includes DVD & Report)	40	LF		
Visual Inspection (Pictures), per Project (During Construction)	1	EA		
Hydro-Excavation complete (onsite hours only)	10	Per Hour		
<b>Storm Line Cleaning (25% full or greater)</b>				
24" PIPE - Cleaning 25% full or greater	40	LF		
<b>Specialty Storm Line Cleaning,</b> Applicable to heavy roots, Large diameter rocks, large debris, etc				
12" to 36" PIPE	30	LF		
<b>Earthwork &amp; Grading</b>				
Debris Removal	4	CY		
<b>Erosion Control</b>				
Install, Maintain & Remove Type A Silt Fence - Alternative	20	LF		
<b>LOCATION 57: 2144 FLOWERS RD SUBTOTAL</b>				

**ITB 2025-012 STORMWATER SYSTEM HYDROVAC CLEANING AND  
VIDEO CAPTURE  
COST PROPOSAL**

<b>LOCATION 59: 4000 HENDERSON PARK RD</b>				
<b>Item</b>	<b>Approx Allowed Units</b>	<b>Unit</b>	<b>Unit Price</b>	<b>Projected Cost</b>
<b>General Conditions</b>				
Mobilization	1	EA		
Out of Scope Work, Foreman	2	HR		
Out of Scope Work, Laborer	2	HR		
<b>Traffic Control</b>				
Traffic Control Minor 2 – Includes Cones and Signage	2	Per Day		
<b>TV Inspection and Jet-Vac Cleaning</b>				
TV Storm Lines (includes DVD & Report)	75	LF		
Visual Inspection (Pictures), per Project (During Construction)	1	EA		
Hydro-Excavation complete (onsite hours only)	16	Per Hour		
<b>Storm Line Cleaning (25% full or greater)</b>				
18" PIPE - Cleaning 25% full or greater	75	LF		
<b>Specialty Storm Line Cleaning, Applicable to heavy roots, Large diameter rocks, large debris, etc</b>				
12" to 36" PIPE	60	LF		
<b>Earthwork &amp; Grading</b>				
Debris Removal	4	CY		
<b>Erosion Control</b>				
Install, Maintain & Remove Type A Silt Fence - Alternative	20	LF		
<b>Miscellaneous Items</b>				
Remove, Set Aside and Reset Drainage Structure Concrete Lid	2	EA		
<b>LOCATION 59: 4000 HENDERSON PARK RD SUBTOTAL</b>				

**ITB 2025-012 STORMWATER SYSTEM HYDROVAC CLEANING AND  
VIDEO CAPTURE  
COST PROPOSAL**

LOCATION 60: 1526 SILVER HILL RD				
Item	Approx Allowed Units	Unit	Unit Price	Projected Cost
<b>General Conditions</b>				
Mobilization	1	EA		
Out of Scope Work, Foreman	2	HR		
Out of Scope Work, Laborer	4	HR		
<b>Traffic Control</b>				
Traffic Control Minor 1 – Includes Continuous Crew of 2 Flagmen	2	Per Day		
<b>TV Inspection and Jet-Vac Cleaning</b>				
TV Storm Lines (includes DVD & Report)	80	LF		
Visual Inspection (Pictures), per Project (During Construction)	1	EA		
Hydro-Excavation complete (onsite hours only)	16	Per Hour		
<b>Storm Line Cleaning (25% full or greater)</b>				
30" PIPE - Cleaning 25% full or greater	80	LF		
<b>Specialty Storm Line Cleaning, Applicable to heavy roots, Large diameter rocks, large debris, etc</b>				
12" to 36" PIPE	60	LF		
<b>Earthwork &amp; Grading</b>				
Debris Removal	11	CY		
<b>Erosion Control</b>				
Install, Maintain & Remove Type A Silt Fence - Alternative	10	LF		
<b>Miscellaneous Items</b>				
Remove, Set Aside and Reset Drainage Structure Concrete Lid	2	EA		
<b>LOCATION 60: 1526 SILVER HILL RD SUBTOTAL</b>				

**ITB 2025-012 STORMWATER SYSTEM HYDROVAC CLEANING AND  
VIDEO CAPTURE  
COST PROPOSAL**

LOCATION 61: 1604 JULIETTE RD				
Item	Approx Allowed Units	Unit	Unit Price	Projected Cost
<b>General Conditions</b>				
Mobilization	1	EA		
Out of Scope Work, Foreman	2	HR		
Out of Scope Work, Laborer	2	HR		
<b>Traffic Control</b>				
Traffic Control Minor 2 – Includes Cones and Signage	2	Per Day		
<b>TV Inspection and Jet-Vac Cleaning</b>				
TV Storm Lines (includes DVD & Report)	95	LF		
Visual Inspection (Pictures), per Project (During Construction)	1	EA		
Hydro-Excavation complete (onsite hours only)	16	Per Hour		
<b>Storm Line Cleaning (25% full or greater)</b>				
18" PIPE - Cleaning 25% full or greater	95	LF		
<b>Specialty Storm Line Cleaning,</b> Applicable to heavy roots, Large diameter rocks, large debris, etc				
12" to 36" PIPE	70	LF		
<b>Earthwork &amp; Grading</b>				
Debris Removal	5	CY		
<b>Erosion Control</b>				
Install, Maintain & Remove Type A Silt Fence - Alternative	20	LF		
<b>Miscellaneous Items</b>				
Remove, Set Aside and Reset Drainage Structure Concrete Lid	1	EA		
<b>LOCATION 61: 1604 JULIETTE RD SUBTOTAL</b>				

**ITB 2025-012 STORMWATER SYSTEM HYDROVAC CLEANING AND  
VIDEO CAPTURE  
COST PROPOSAL**

<b>LOCATION 62: 5735 REDCOAT RUN</b>				
<b>Item</b>	<b>Approx Allowed</b>	<b>Unit</b>	<b>Unit Price</b>	<b>Projected Cost</b>
<b>General Conditions</b>				
Mobilization	1	EA		
Out of Scope Work, Foreman	1	HR		
Out of Scope Work, Laborer	2	HR		
<b>Traffic Control</b>				
Traffic Control Minor 2 – Includes Cones and Signage	1	Per Day		
<b>TV Inspection and Jet-Vac Cleaning</b>				
TV Storm Lines (includes DVD & Report)	35	LF		
Visual Inspection (Pictures), per Project (During Construction)	1	EA		
Hydro-Excavation complete (onsite hours only)	10	Per Hour		
<b>Storm Line Cleaning (25% full or greater)</b>				
18" PIPE - Cleaning 25% full or greater	35	LF		
<b>Specialty Storm Line Cleaning,</b> Applicable to heavy roots, Large diameter rocks, large debris, etc				
12" to 36" PIPE	25	LF		
<b>Earthwork &amp; Grading</b>				
Debris Removal	2	CY		
<b>Miscellaneous Items</b>				
Remove, Set Aside and Reset Drainage Structure Concrete Lid	2	EA		
<b>LOCATION 62: 5735 REDCOAT RUN SUBTOTAL</b>				

# ITB 2025-012 STORMWATER SYSTEM HYDROVAC CLEANING AND VIDEO CAPTURE COST PROPOSAL

LOCATION 64: 6258 OLD STONE MOUNTAIN RD				
Item	Approx Allowed	Unit	Unit Price	Projected Cost
<b>General Conditions</b>				
Mobilization	1	EA		
Out of Scope Work, Foreman	2	HR		
Out of Scope Work, Laborer	4	HR		
<b>Traffic Control</b>				
Traffic Control Minor 1 – Includes Continuous Crew of 2 Flagmen	1	Per Day		
Traffic Control Major - Included Road Closure Detours, Signs	1	EA		
<b>TV Inspection and Jet-Vac Cleaning</b>				
TV Storm Lines (includes DVD & Report)	70	LF		
Visual Inspection (Pictures), per Project (During Construction)	1	EA		
Hydro-Excavation complete (onsite hours only)	16	Per Hour		
<b>Storm Line Cleaning (25% full or greater)</b>				
18" PIPE - Cleaning 25% full or greater	70	LF		
<b>Specialty Storm Line Cleaning,</b> Applicable to heavy roots, Large diameter rocks, large debris, etc				
12" to 36" PIPE	50	LF		
<b>Earthwork &amp; Grading</b>				
Debris Removal	4	CY		
<b>Erosion Control</b>				
Install, Maintain & Remove Type A Silt Fence - Alternative	20	LF		
<b>Miscellaneous Items</b>				
Remove, Set Aside and Reset Drainage Structure Concrete Lid	1	EA		
<b>LOCATION 64: 6258 OLD STONE MOUNTAIN RD SUBTOTAL</b>				

**ITB 2025-012 STORMWATER SYSTEM HYDROVAC CLEANING AND  
VIDEO CAPTURE  
COST PROPOSAL**

LOCATION 65: 1584 AVON AVE				
Item	Approx Allowed Units	Unit	Unit Price	Projected Cost
<b>General Conditions</b>				
Mobilization	1	EA		
Out of Scope Work, Foreman	2	HR		
Out of Scope Work, Laborer	2	HR		
<b>Traffic Control</b>				
Traffic Control Minor 2 – Includes Cones and Signage	3	Per Day		
<b>TV Inspection and Jet-Vac Cleaning</b>				
TV Storm Lines (includes DVD & Report)	210	LF		
Visual Inspection (Pictures), per Project (During Construction)	1	EA		
Hydro-Excavation complete (onsite hours only)	24	Per Hour		
<b>Storm Line Cleaning (25% full or greater)</b>				
18" PIPE - Cleaning 25% full or greater	210	LF		
<b>Specialty Storm Line Cleaning,</b> Applicable to heavy roots, Large diameter rocks, large debris, etc				
12" to 36" PIPE	150	LF		
<b>Earthwork &amp; Grading</b>				
Debris Removal	10	CY		
<b>Erosion Control</b>				
Install, Maintain & Remove Type A Silt Fence - Alternative	20	LF		
<b>Miscellaneous Items</b>				
Remove, Set Aside and Reset Drainage Structure Concrete Lid	2	EA		
<b>LOCATION 65: 1584 AVON AVE SUBTOTAL</b>				



**ITB 2025-012 STORMWATER SYSTEM HYDROVAC CLEANING AND  
VIDEO CAPTURE  
COST PROPOSAL**

LOCATION 66: 1315 1455 OAKENGATE DR				
Item	Approx Allowed Units	Unit	Unit Price	Projected Cost
<b>General Conditions</b>				
Mobilization	1	EA		
Out of Scope Work, Foreman	2	HR		
Out of Scope Work, Laborer	2	HR		
<b>Traffic Control</b>				
Traffic Control Minor 1 – Includes Continuous Crew of 2 Flagmen	2	Per Day		
<b>TV Inspection and Jet-Vac Cleaning</b>				
TV Storm Lines (includes DVD & Report)	75	LF		
Visual Inspection (Pictures), per Project (During Construction)	1	EA		
Hydro-Excavation complete (onsite hours only)	16	Per Hour		
<b>Storm Line Cleaning (25% full or greater)</b>				
15" PIPE - Cleaning 25% full or greater	50	LF		
18" PIPE - Cleaning 25% full or greater	25	LF		
<b>Specialty Storm Line Cleaning, Applicable to heavy roots, Large diameter rocks, large debris, etc</b>				
12" to 36" PIPE	50	LF		
<b>Earthwork &amp; Grading</b>				
Debris Removal	3	CY		
<b>Erosion Control</b>				
Install, Maintain & Remove Type A Silt Fence - Alternative	10	LF		
<b>Miscellaneous Items</b>				
Remove, Set Aside and Reset Drainage Structure Concrete Lid	2	EA		
<b>LOCATION 66: 1315 1455 OAKENGATE DR SUBTOTAL</b>				

**ITB 2025-012 STORMWATER SYSTEM HYDROVAC CLEANING AND  
VIDEO CAPTURE  
COST PROPOSAL**

LOCATION 68: 4594 OSWOOD CT				
Item	Approx Allowed Units	Unit	Unit Price	Projected Cost
<b>General Conditions</b>				
Mobilization	1	EA		
Out of Scope Work, Foreman	1	HR		
Out of Scope Work, Laborer	2	HR		
<b>Traffic Control</b>				
Traffic Control Minor 2 – Includes Cones and Signage	1	Per Day		
<b>TV Inspection and Jet-Vac Cleaning</b>				
TV Storm Lines (includes DVD & Report)	25	LF		
Visual Inspection (Pictures), per Project (During Construction)	1	EA		
Hydro-Excavation complete (onsite hours only)	10	Per Hour		
<b>Storm Line Cleaning (25% full or greater)</b>				
18" PIPE - Cleaning 25% full or greater	25	LF		
<b>Specialty Storm Line Cleaning,</b> Applicable to heavy roots, Large diameter rocks, large debris, etc				
12" to 36" PIPE	25	LF		
<b>Earthwork &amp; Grading</b>				
Debris Removal	1	CY		
<b>Erosion Control</b>				
Install, Maintain & Remove Type A Silt Fence - Alternative	20	LF		
<b>Miscellaneous Items</b>				
Remove, Set Aside and Reset Drainage Structure Concrete Lid	2	EA		
<b>LOCATION 68: 4594 OSWOOD CT SUBTOTAL</b>				

**ITB 2025-012 STORMWATER SYSTEM HYDROVAC CLEANING AND  
VIDEO CAPTURE  
COST PROPOSAL**

LOCATION 75: 5682 EAST PONCE DE LEON AVE				
Item	Approx Allowed Units	Unit	Unit Price	Projected Cost
<b>General Conditions</b>				
Mobilization	1	EA		
Out of Scope Work, Foreman	2	HR		
Out of Scope Work, Laborer	4	HR		
<b>Traffic Control</b>				
Traffic Control Minor 1 – Includes Continuous Crew of 2 Flagmen	2	Per Day		
<b>TV Inspection and Jet-Vac Cleaning</b>				
TV Storm Lines (includes DVD & Report)	45	LF		
Visual Inspection (Pictures), per Project (During Construction)	1	EA		
Hydro-Excavation complete (onsite hours only)	16	Per Hour		
<b>Storm Line Cleaning (25% full or greater)</b>				
18" PIPE - Cleaning 25% full or greater	45	LF		
<b>Specialty Storm Line Cleaning, Applicable to heavy roots, Large diameter rocks, large debris, etc</b>				
12" to 36" PIPE	30	LF		
<b>Earthwork &amp; Grading</b>				
Debris Removal	2	CY		
<b>Erosion Control</b>				
Install, Maintain & Remove Type A Silt Fence - Alternative	10	LF		
<b>Miscellaneous Items</b>				
Remove, Set Aside and Reset Drainage Structure Concrete Lid	2	EA		
<b>LOCATION 75: 5682 EAST PONCE DE LEON AVE SUBTOTAL</b>				

**ITB 2025-012 STORMWATER SYSTEM HYDROVAC CLEANING AND  
VIDEO CAPTURE  
COST PROPOSAL**

<b>LOCATION 77: 2670 TUCKER VALLEY RD</b>				
<b>Item</b>	<b>Approx Allowed Units</b>	<b>Unit</b>	<b>Unit Price</b>	<b>Projected Cost</b>
<b>General Conditions</b>				
Mobilization	1	EA		
Out of Scope Work, Foreman	2	HR		
Out of Scope Work, Laborer	2	HR		
<b>Traffic Control</b>				
Traffic Control Minor 2 – Includes Cones and Signage	3	Per Day		
<b>TV Inspection and Jet-Vac Cleaning</b>				
TV Storm Lines (includes DVD & Report)	190	LF		
Visual Inspection (Pictures), per Project (During Construction)	1	EA		
Hydro-Excavation complete (onsite hours only)	24	Per Hour		
<b>Storm Line Cleaning (25% full or greater)</b>				
18" PIPE - Cleaning 25% full or greater	190	LF		
<b>Specialty Storm Line Cleaning, Applicable to heavy roots, Large diameter rocks, large debris, etc</b>				
12" to 36" PIPE	150	LF		
<b>Earthwork &amp; Grading</b>				
Debris Removal	10	CY		
<b>Erosion Control</b>				
Install, Maintain & Remove Type A Silt Fence - Alternative	20	LF		
<b>Miscellaneous Items</b>				
Remove, Set Aside and Reset Drainage Structure Concrete Lid	2	EA		
<b>LOCATION 77: 2670 TUCKER VALLEY RD SUBTOTAL</b>				

ITB 2025-012 STORMWATER SYSTEM HYDROVAC CLEANING AND  
VIDEO CAPTURE  
COST PROPOSAL

Enter subtotal from previous pages for each location :

	<b>Projected Cost</b>
LOCATION 48: 4928 CHAMBLEE TUCKER RD	
LOCATION 49: 2101 BROCKETT RD	
LOCATION 50: 4214 SMITHSONIA CT	
LOCATION 51: 3018 PLEASANTDALE RD	
LOCATION 52: 2593 LAKE ERIN DR	
LOCATION 53: 1590 LILBURN STONE MOUNTAIN RD	
LOCATION 55: 3300 MONTREAL INDUSTRIAL WAY	
LOCATION 57: 2144 FLOWERS RD	
LOCATION 59: 4000 HENDERSON PARK RD	
LOCATION 60: 1526 SILVER HILL RD	
LOCATION 61: 1604 JULIETTE RD	
LOCATION 62: 5735 REDCOAT RUN	
LOCATION 64: 6258 OLD STONE MOUNTAIN RD	
LOCATION 65: 1584 AVON AVE	
LOCATION 66: 1315 1455 OAKENGATE DR	
LOCATION 68: 4594 OSWOOD CT	
LOCATION 75: 5682 EAST PONCE DE LEON AVE	
LOCATION 77: 2670 TUCKER VALLEY RD	
<b>TOTAL COST PROPOSAL</b>	

ITB 2025-012 STORMWATER SYSTEM HYDROVAC CLEANING AND  
VIDEO CAPTURE  
COST PROPOSAL

\*In case of discrepancy between the unit price and the total price on the completed Bid Schedule, the unit price will prevail, and the total price will be corrected.

**Proposal Price Certification**

In compliance with the attached specification, the undersigned understands the City's minimum scope requirements.

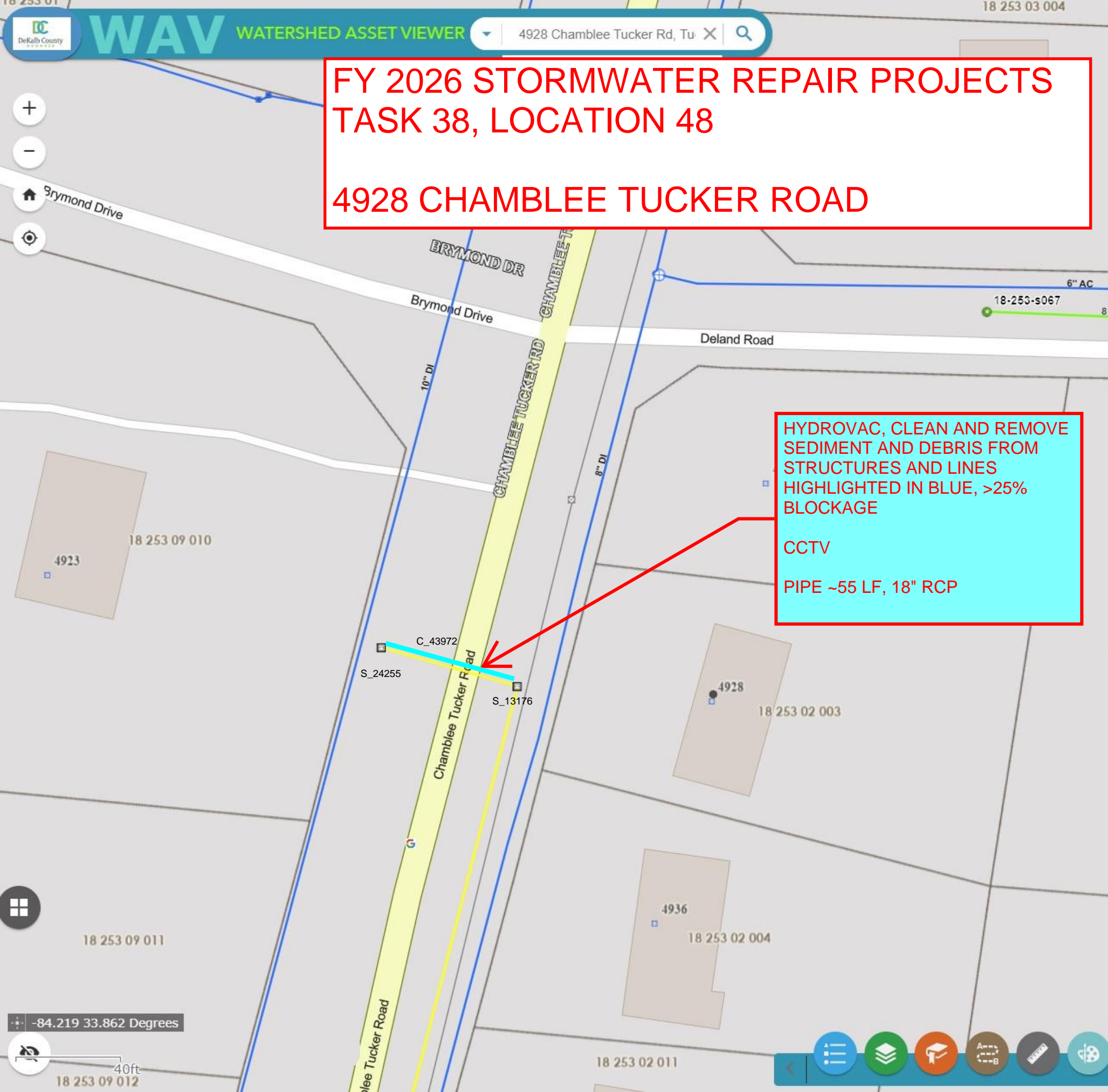
The undersigned offers and agrees that if this proposal is accepted by the Mayor and City Council within one hundred twenty (120) days of the date of proposal opening, that the undersigned will furnish any or all of the deliverables and additional services offered, at the quoted price, to the designated point(s) within the time specified.

COMPANY \_\_\_\_\_

AUTHORIZED SIGNATURE \_\_\_\_\_

PRINT / TYPE NAME \_\_\_\_\_

CONTACT'S EMAIL ADDRESS \_\_\_\_\_



# FY 2026 STORMWATER REPAIR PROJECTS TASK 38, LOCATION 48

4928 CHAMBLEE TUCKER ROAD

HYDROVAC, CLEAN AND REMOVE  
SEDIMENT AND DEBRIS FROM  
STRUCTURES AND LINES  
HIGHLIGHTED IN BLUE, >25%  
BLOCKAGE

CCTV

PIPE ~55 LF, 18" RCP



HYDROVAC, CLEAN AND REMOVE  
SEDIMENT AND DEBRIS FROM  
STRUCTURES AND LINES  
HIGHLIGHTED IN BLUE, >25%  
BLOCKAGE

CCTV

PIPE ~12 LF, 15" RCP

S\_18354

S\_18353

8" DIP

18-186-s201

Pine Valley Road

Pine Valley Road

FY 2026 STORMWATER REPAIR PROJECTS  
TASK 38, LOCATION 49

2101 BROCKETT ROAD

-84.223 33.845 Degrees

10ft



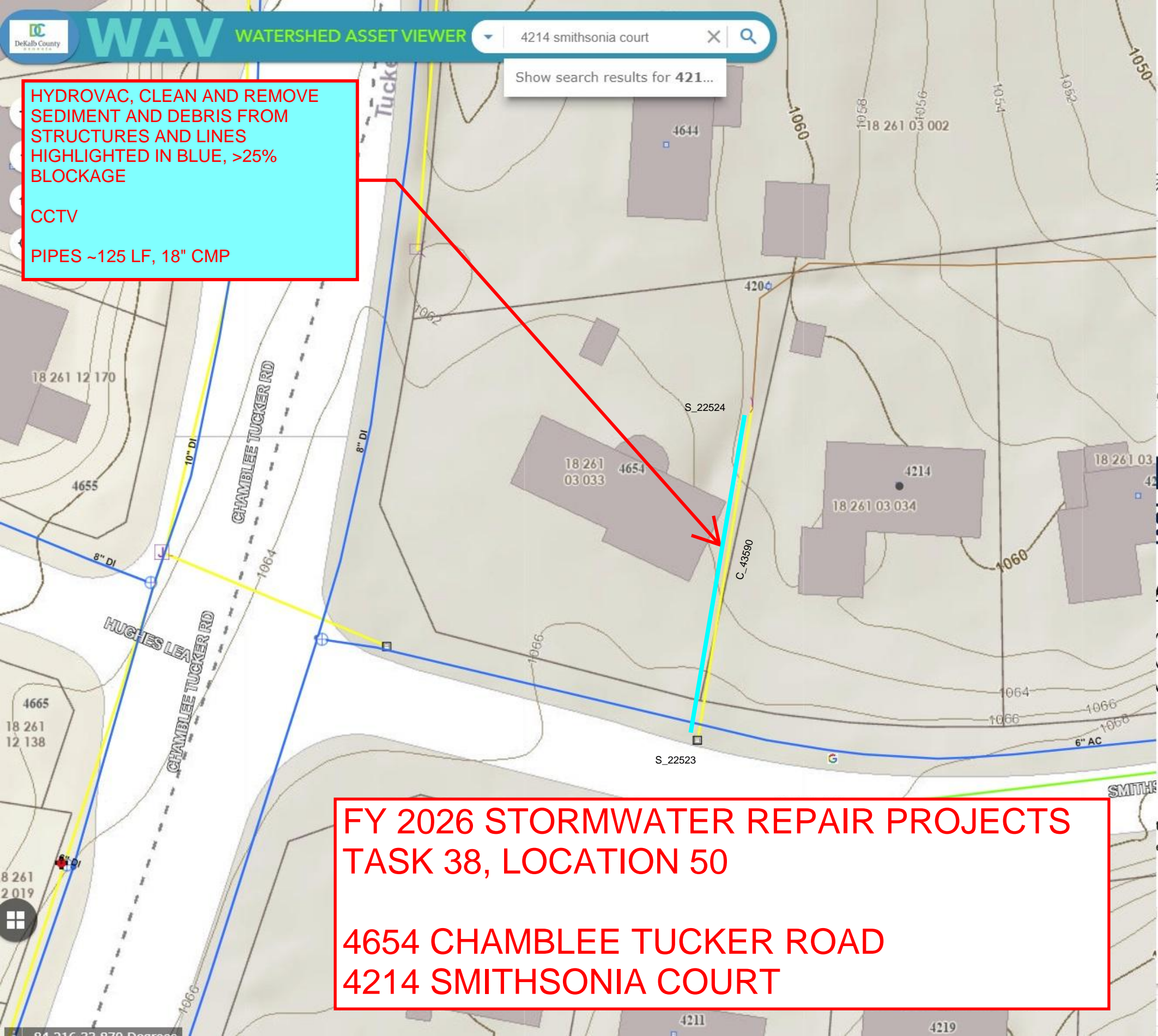


Show search results for 421...

HYDROVAC, CLEAN AND REMOVE  
SEDIMENT AND DEBRIS FROM  
STRUCTURES AND LINES  
HIGHLIGHTED IN BLUE, >25%  
BLOCKAGE

CCTV

PIPES ~125 LF, 18" CMP

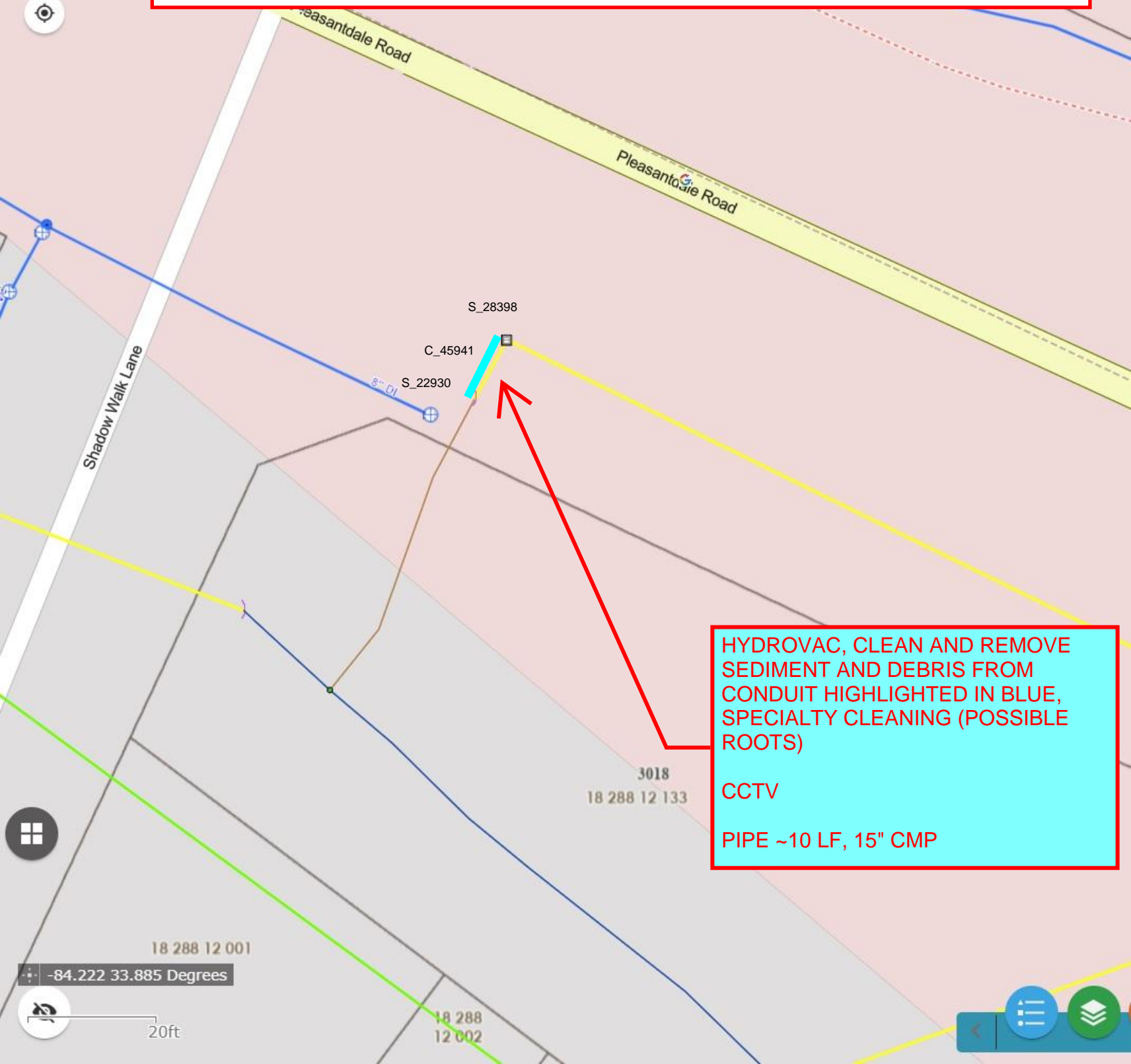


FY 2026 STORMWATER REPAIR PROJECTS  
TASK 38, LOCATION 50

4654 CHAMBLEE TUCKER ROAD  
4214 SMITHSONIA COURT

# FY 2026 STORMWATER REPAIR PROJECTS TASK 38, LOCATION 51

## 3018 PLEASANTDALE ROAD



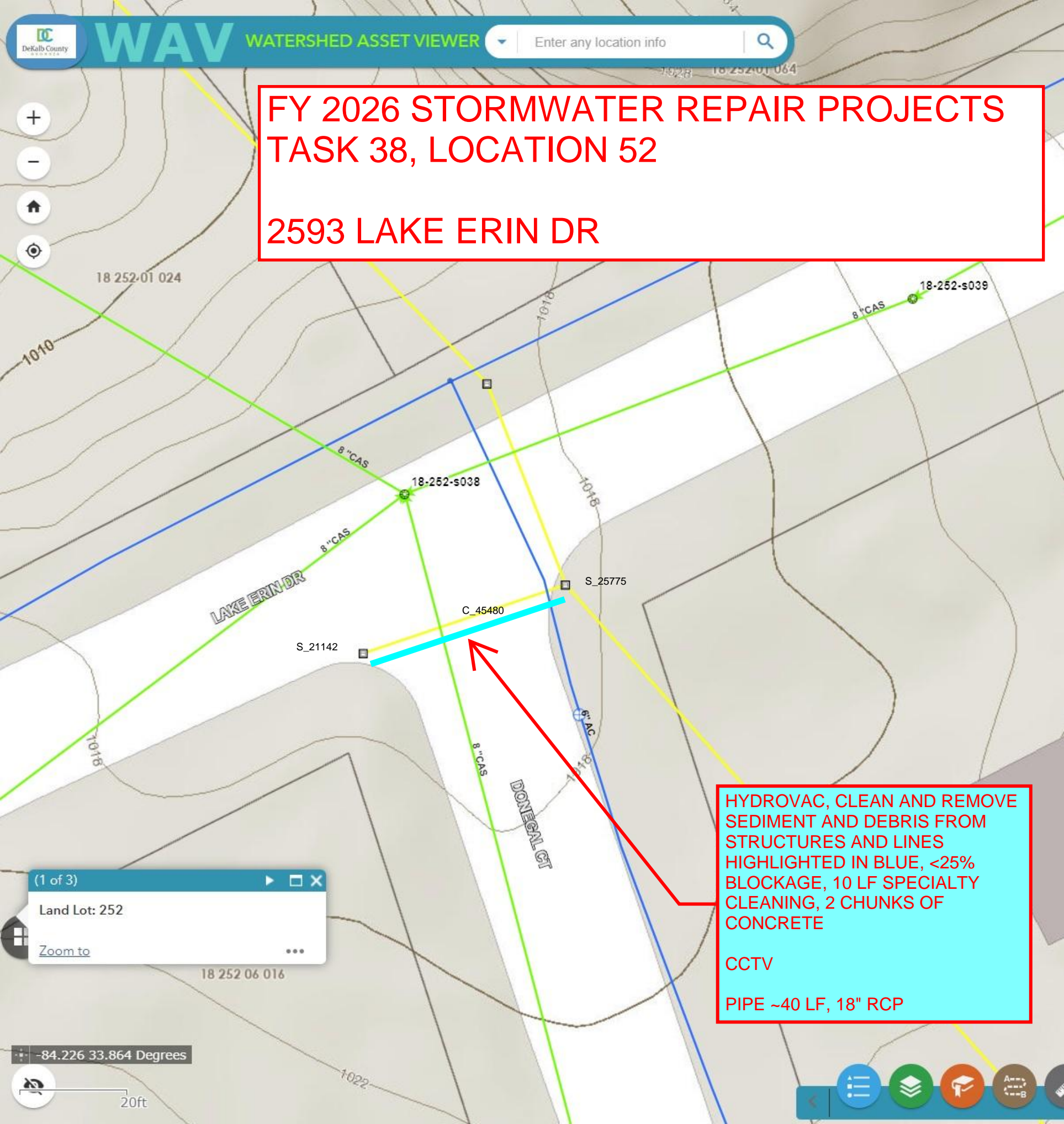
HYDROVAC, CLEAN AND REMOVE  
SEDIMENT AND DEBRIS FROM  
CONDUIT HIGHLIGHTED IN BLUE,  
SPECIALTY CLEANING (POSSIBLE  
ROOTS)

CCTV

PIPE ~10 LF, 15" CMP



FY 2026 STORMWATER REPAIR PROJECTS  
TASK 38, LOCATION 52  
  
2593 LAKE ERIN DR



HYDROVAC, CLEAN AND REMOVE  
SEDIMENT AND DEBRIS FROM  
STRUCTURES AND LINES  
HIGHLIGHTED IN BLUE, <25%  
BLOCKAGE, 10 LF SPECIALTY  
CLEANING, 2 CHUNKS OF  
CONCRETE  
  
CCTV  
  
PIPE ~40 LF, 18" RCP

(1 of 3)

Land Lot: 252

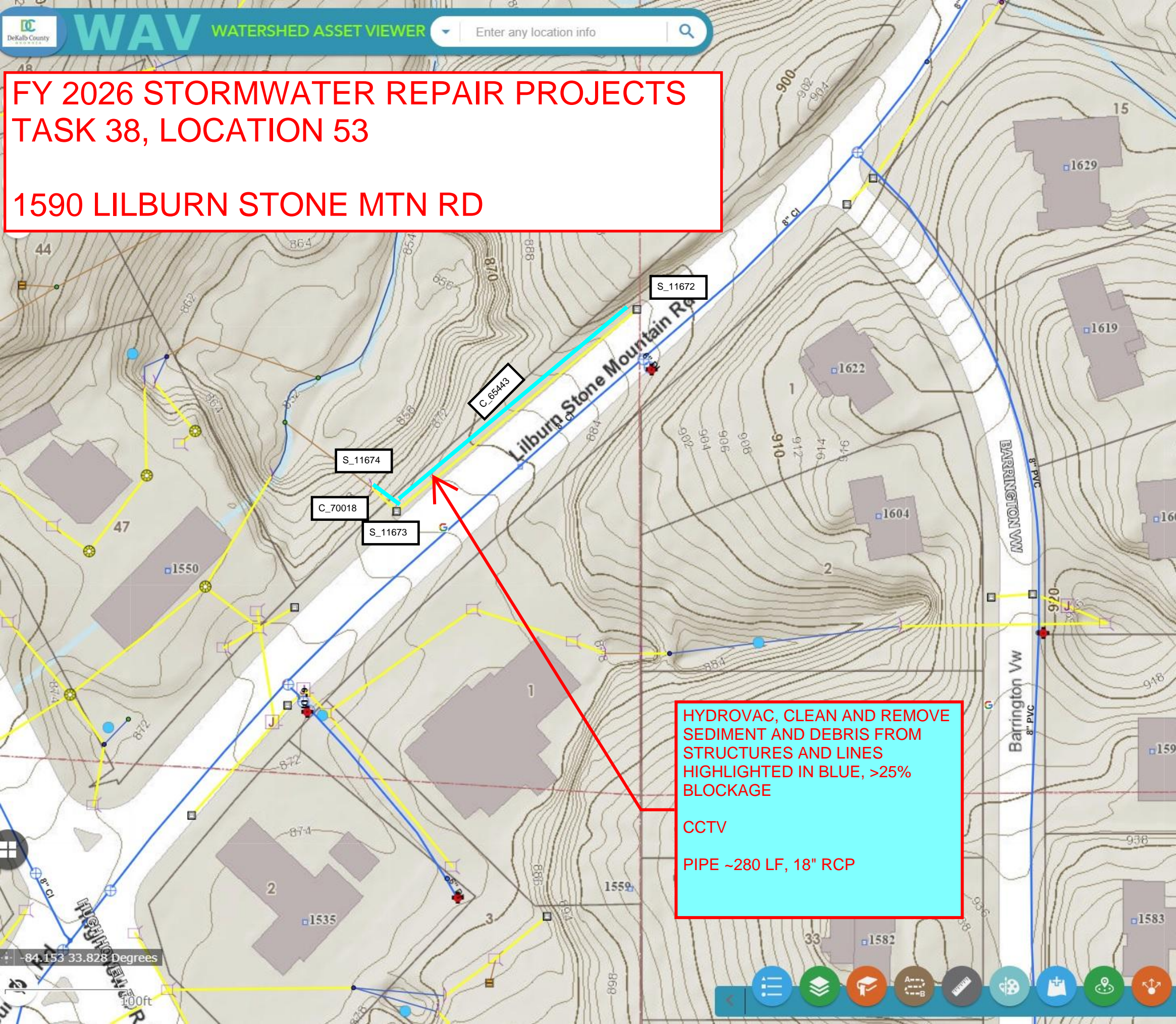
Zoom to

-84.226 33.864 Degrees

20ft



**FY 2026 STORMWATER REPAIR PROJECTS**  
**TASK 38, LOCATION 53**  
**1590 LILBURN STONE MTN RD**



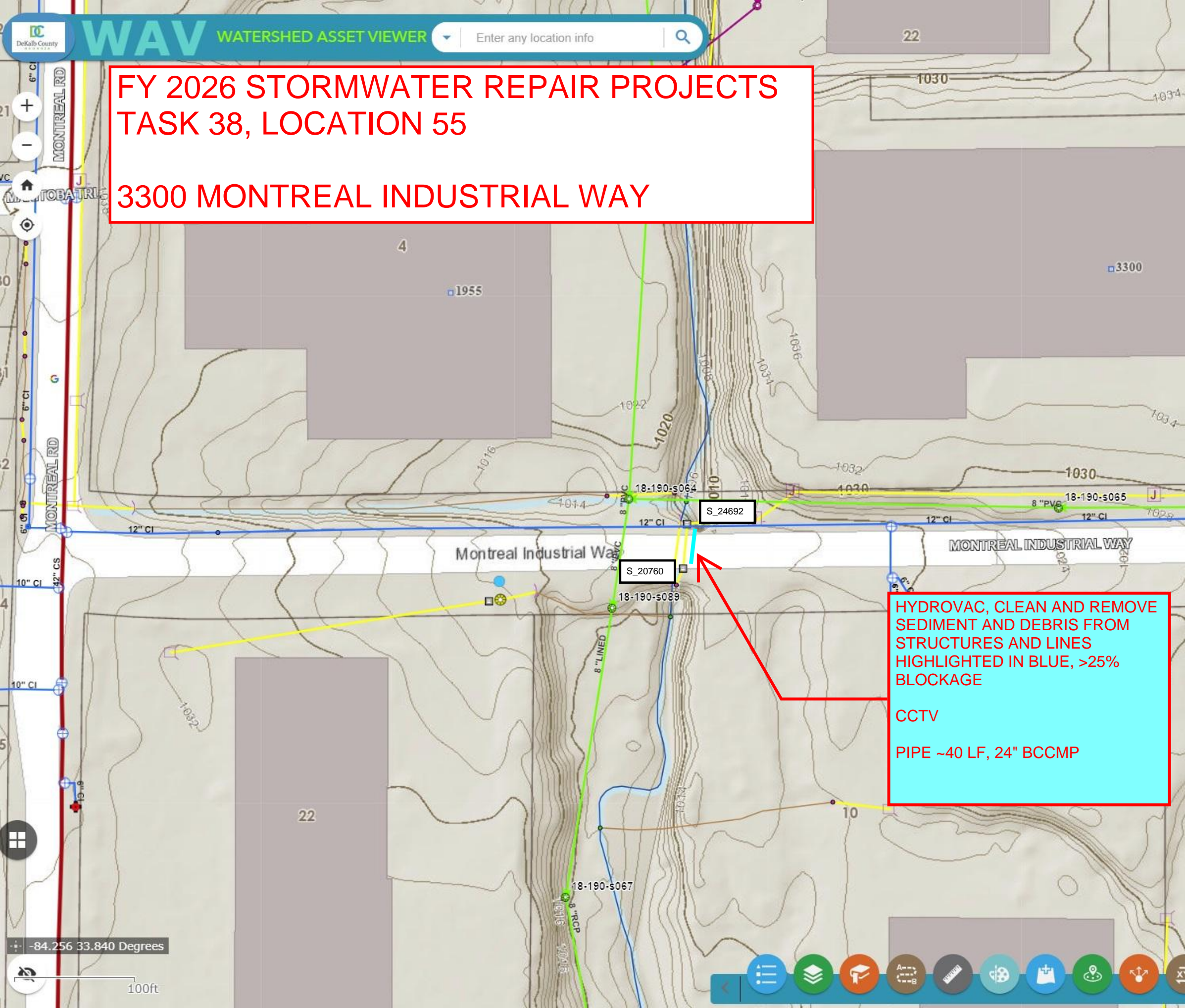
HYDROVAC, CLEAN AND REMOVE  
SEDIMENT AND DEBRIS FROM  
STRUCTURES AND LINES  
HIGHLIGHTED IN BLUE, >25%  
BLOCKAGE

CCTV

PIPE ~280 LF, 18" RCP



FY 2026 STORMWATER REPAIR PROJECTS  
TASK 38, LOCATION 55  
3300 MONTREAL INDUSTRIAL WAY



HYDROVAC, CLEAN AND REMOVE  
SEDIMENT AND DEBRIS FROM  
STRUCTURES AND LINES  
HIGHLIGHTED IN BLUE, >25%  
BLOCKAGE

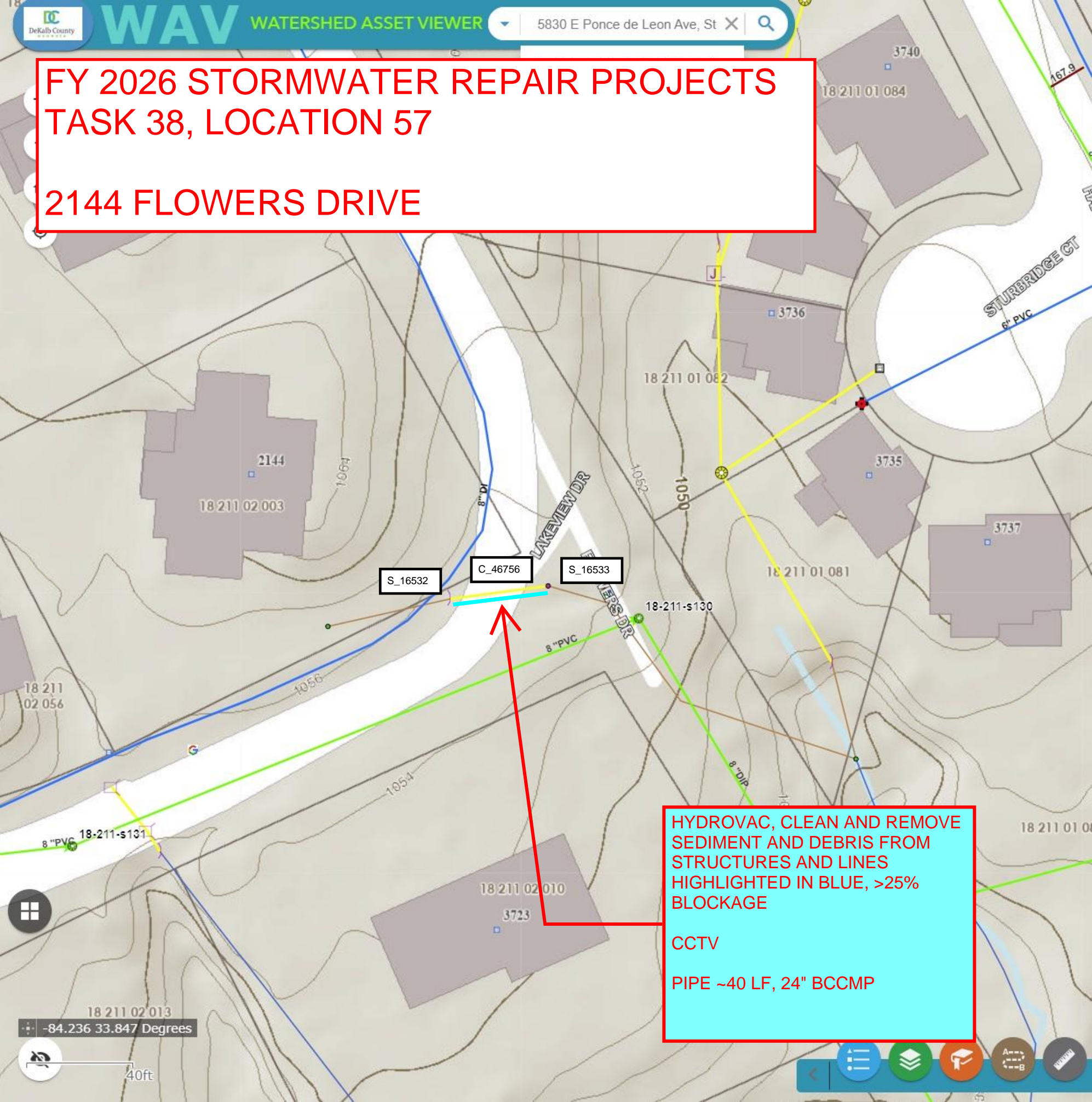
CCTV

PIPE ~40 LF, 24" BCCMP



# FY 2026 STORMWATER REPAIR PROJECTS TASK 38, LOCATION 57

## 2144 FLOWERS DRIVE



HYDROVAC, CLEAN AND REMOVE  
SEDIMENT AND DEBRIS FROM  
STRUCTURES AND LINES  
HIGHLIGHTED IN BLUE, >25%  
BLOCKAGE

CCTV

PIPE ~40 LF, 24" BCCMP



# FY 2026 STORMWATER REPAIR PROJECTS TASK 38, LOCATION 59

## 4000 HENDERSON PARK ROAD



HYDROVAC, CLEAN AND REMOVE  
SEDIMENT AND DEBRIS FROM  
STRUCTURES AND LINES  
HIGHLIGHTED IN BLUE, >25%  
BLOCKAGE

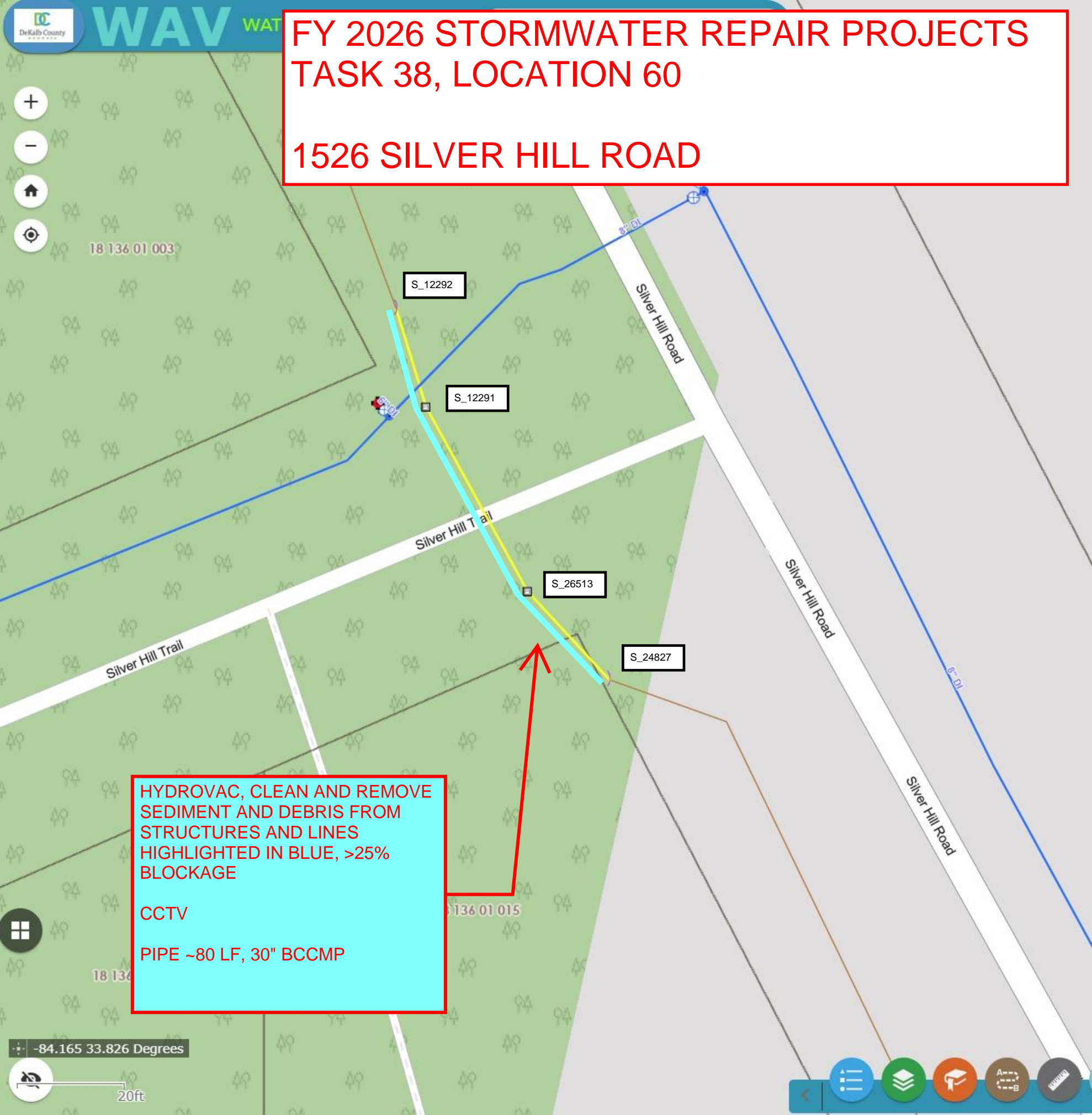
CCTV

PIPE ~72 LF, 18" BCCMP



# FY 2026 STORMWATER REPAIR PROJECTS TASK 38, LOCATION 60

## 1526 SILVER HILL ROAD



HYDROVAC, CLEAN AND REMOVE  
SEDIMENT AND DEBRIS FROM  
STRUCTURES AND LINES  
HIGHLIGHTED IN BLUE, >25%  
BLOCKAGE

CCTV

PIPE ~80 LF, 30" BCCMP





US 78;GA 410



FY 2026 STORMWATER  
REPAIR PROJECTS  
TASK 38, LOCATION 61  
  
1604 JULIETTE ROAD

Stone Mountain Freeway

Juliette Road

US 78;GA 410

US 78;GA 410

Stone Mountain Freeway

US 78;GA 410

Stone Mountain Freeway

US 78;GA 410

US 78;GA 410

8

1581

9

HYDROVAC, CLEAN AND REMOVE  
SEDIMENT AND DEBRIS FROM  
STRUCTURES AND LINES  
HIGHLIGHTED IN BLUE, >25%  
BLOCKAGE

CCTV  
  
PIPE ~95 LF, 18" CMP

S\_26752

S\_14619

18-137-p308

3

8" PVC

Juliette Road

Juliette Road

10 .8

8" CI

6" DI

8" CI

-84.177 33.828 Degrees

100ft



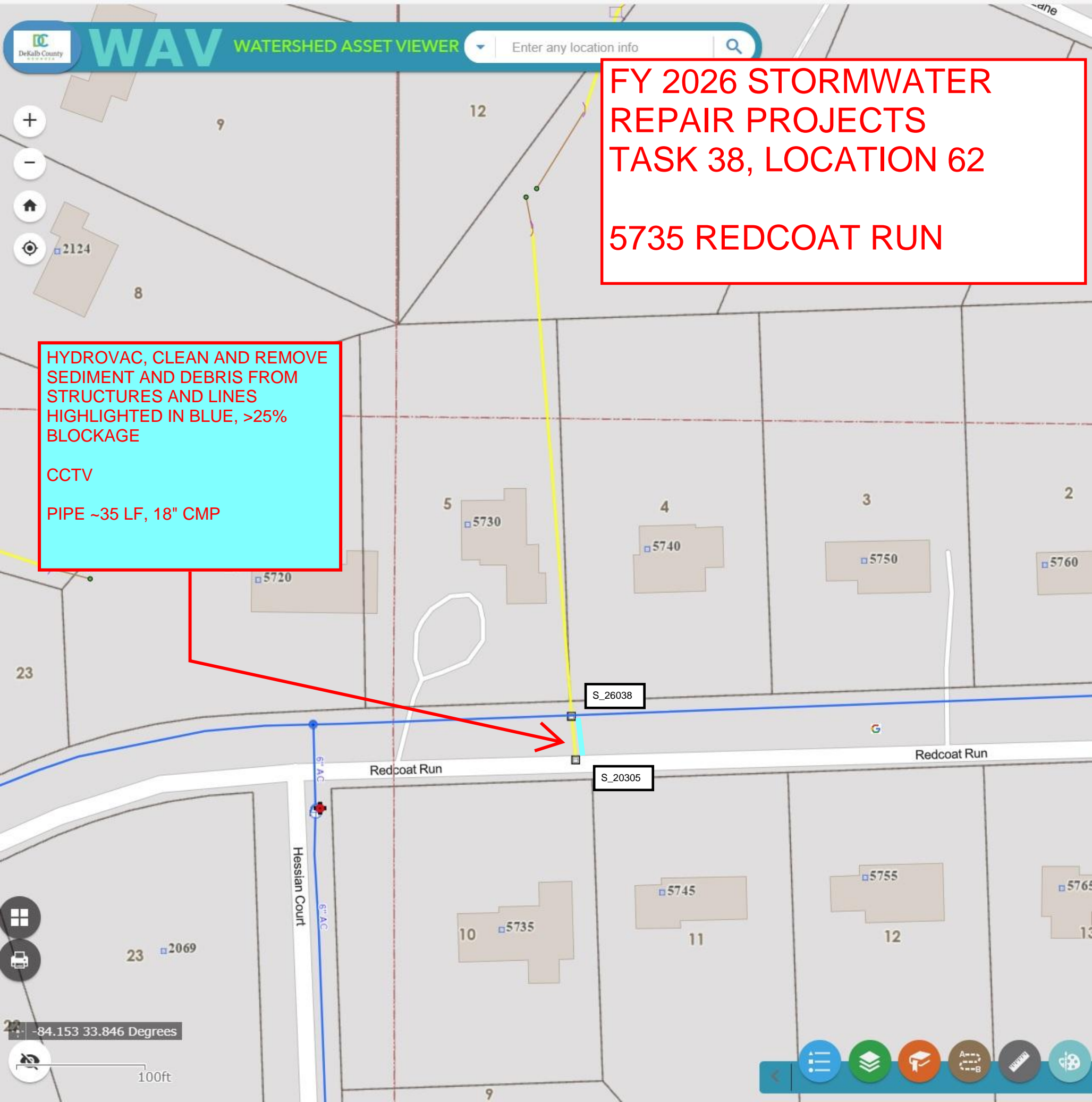
# FY 2026 STORMWATER REPAIR PROJECTS TASK 38, LOCATION 62

## 5735 REDCOAT RUN

HYDROVAC, CLEAN AND REMOVE  
SEDIMENT AND DEBRIS FROM  
STRUCTURES AND LINES  
HIGHLIGHTED IN BLUE, >25%  
BLOCKAGE

CCTV

PIPE ~35 LF, 18" CMP





# FY 2026 STORMWATER REPAIR PROJECTS

TASK 38, LOCATION 64

6258 OLD STONE MOUNTAIN ROAD

HYDROVAC, CLEAN AND REMOVE  
SEDIMENT AND DEBRIS FROM  
STRUCTURES AND LINES  
HIGHLIGHTED IN BLUE, >25%  
BLOCKAGE

CCTV

PIPE ~70 LF, 18" CMP

S\_20149

S\_25927

Five Forks Trickum Road

Baron Court Southwest

DEKALB COUNTY  
GWINNETT COUNTY

Old Stone Mountain Road

Old Stone Mountain Road

Old Stone Mountain Road

-84.134 33.834 Degrees

100ft

15

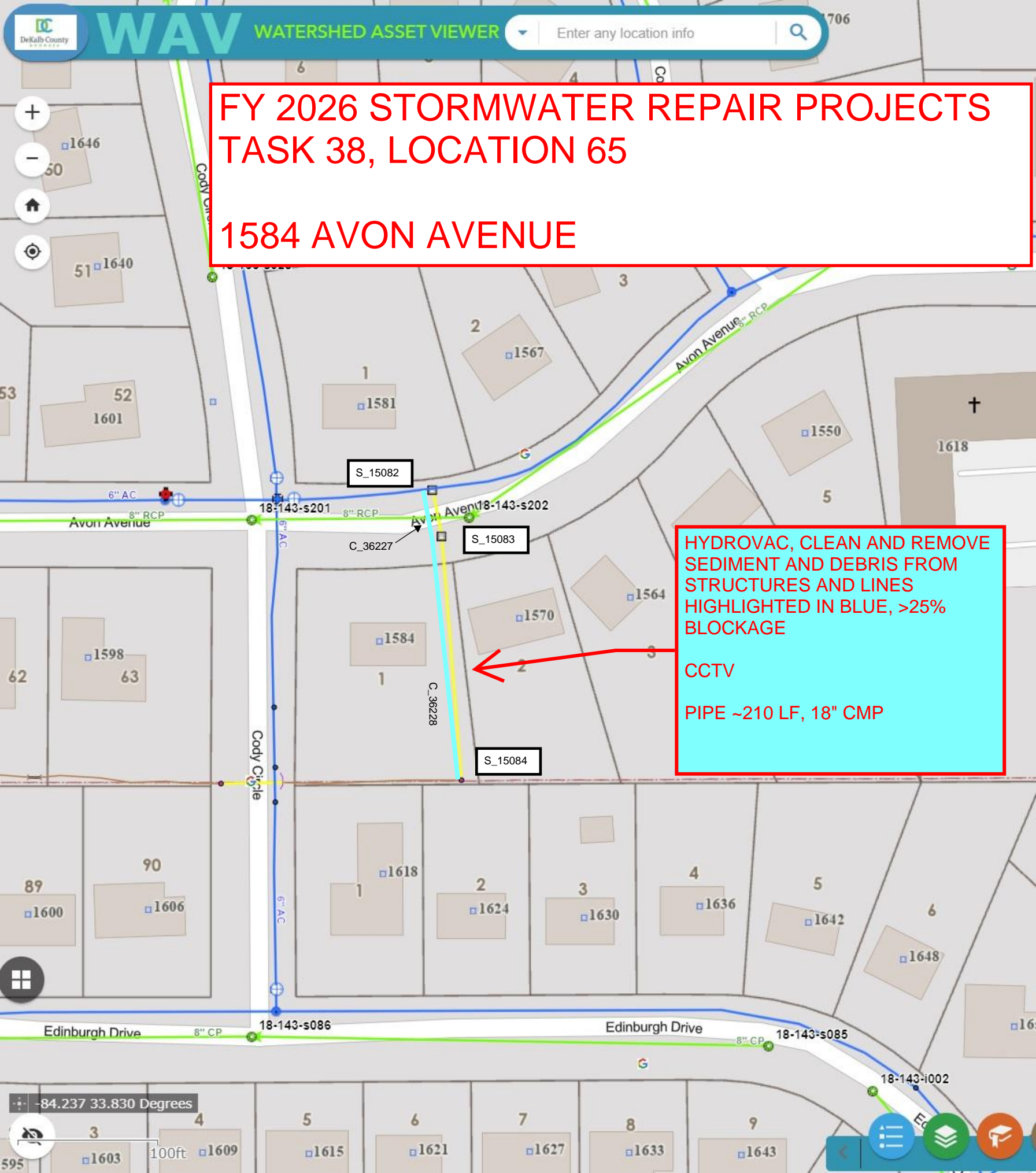
16

14

1.5" COP

## FY 2026 STORMWATER REPAIR PROJECTS TASK 38, LOCATION 65

### 1584 AVON AVENUE



HYDROVAC, CLEAN AND REMOVE  
SEDIMENT AND DEBRIS FROM  
STRUCTURES AND LINES  
HIGHLIGHTED IN BLUE, >25%  
BLOCKAGE

CCTV

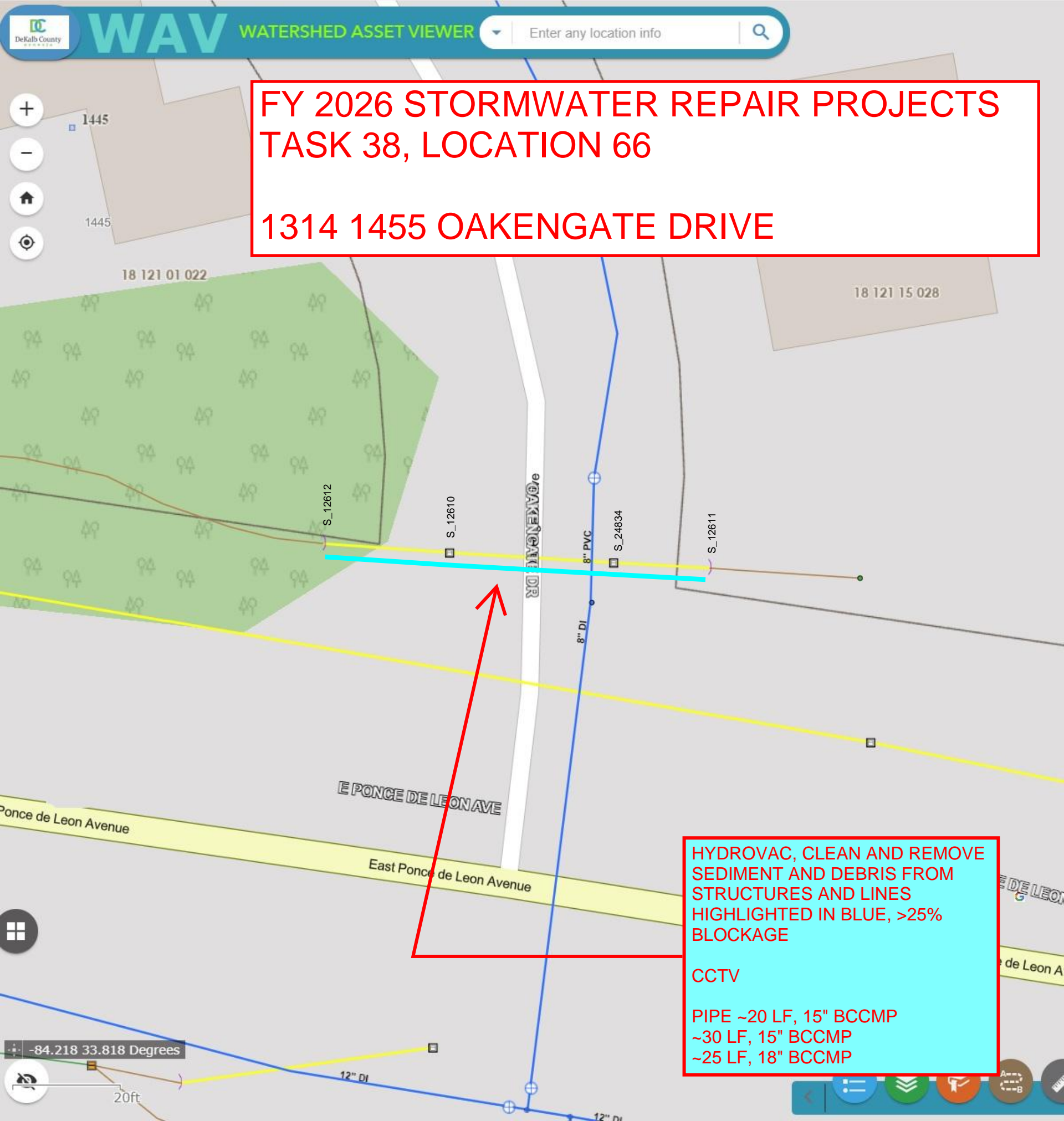
PIPE ~210 LF, 18" CMP





## FY 2026 STORMWATER REPAIR PROJECTS TASK 38, LOCATION 66

### 1314 1455 OAKENGATE DRIVE

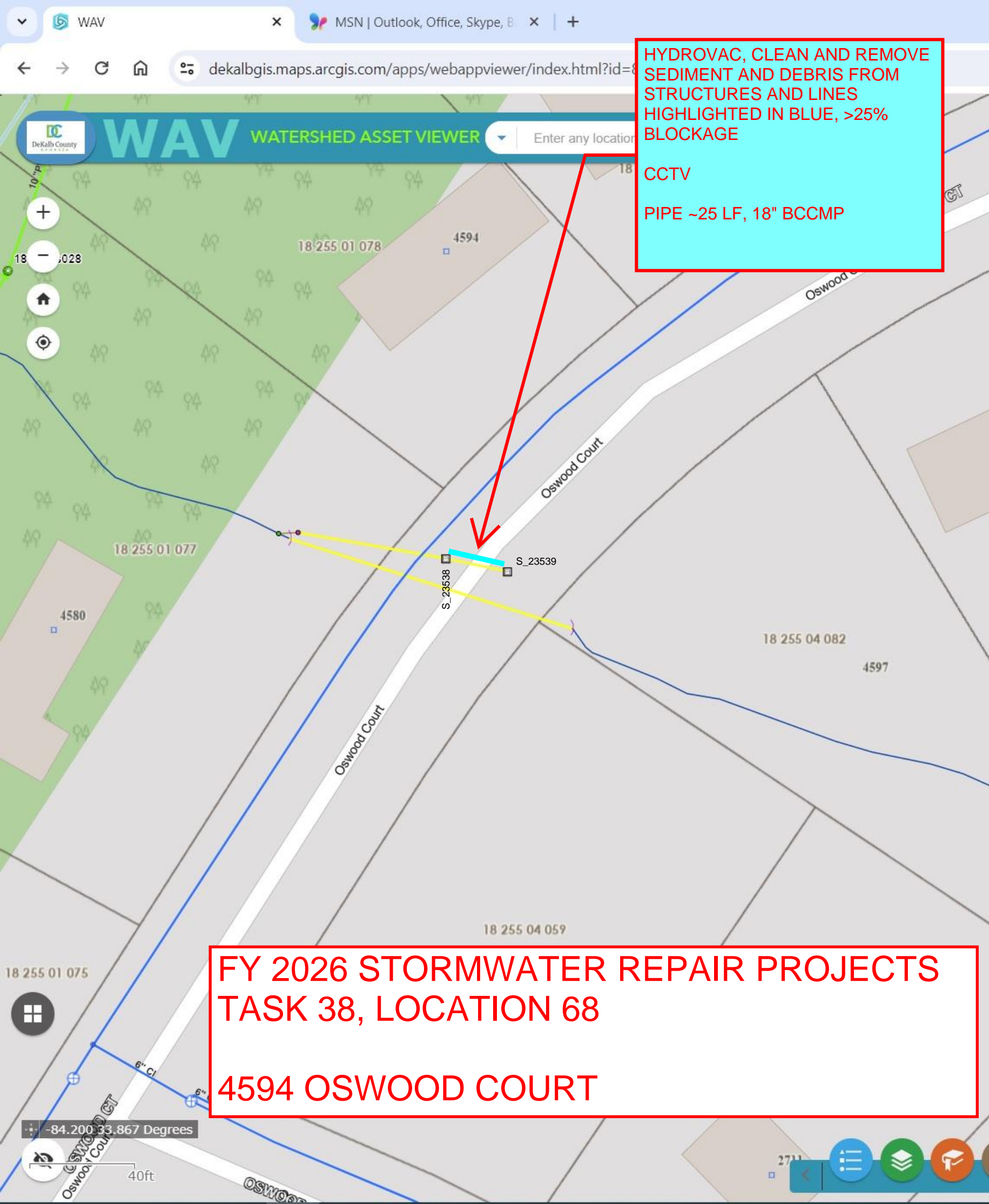


HYDROVAC, CLEAN AND REMOVE  
SEDIMENT AND DEBRIS FROM  
STRUCTURES AND LINES  
HIGHLIGHTED IN BLUE, >25%  
BLOCKAGE

CCTV

PIPE ~20 LF, 15" BCCMP  
~30 LF, 15" BCCMP  
~25 LF, 18" BCCMP





HYDROVAC, CLEAN AND REMOVE  
SEDIMENT AND DEBRIS FROM  
STRUCTURES AND LINES  
HIGHLIGHTED IN BLUE, >25%  
BLOCKAGE

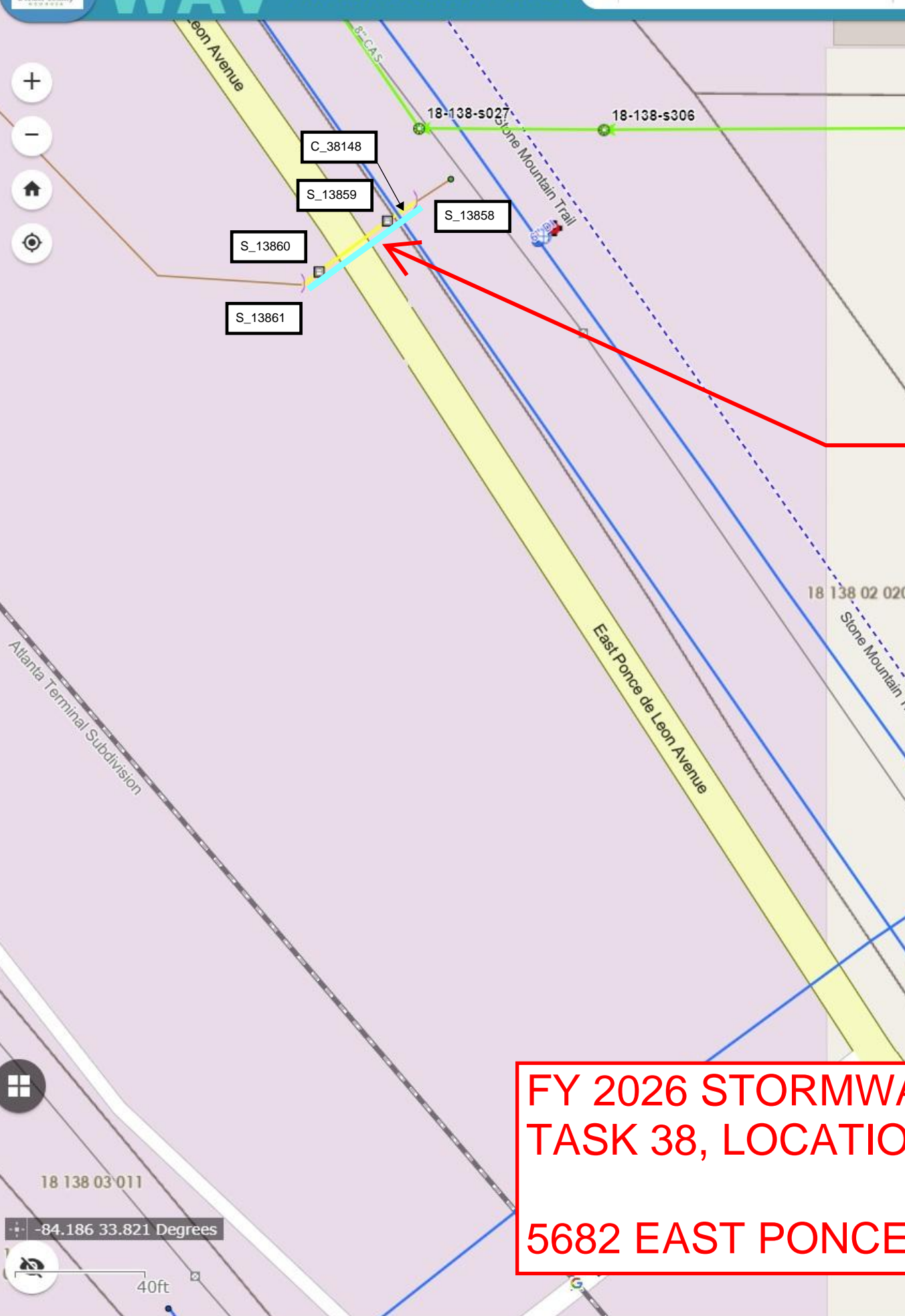
CCTV

PIPE ~25 LF, 18" BCCMP

FY 2026 STORMWATER REPAIR PROJECTS  
TASK 38, LOCATION 68

4594 OSWOOD COURT





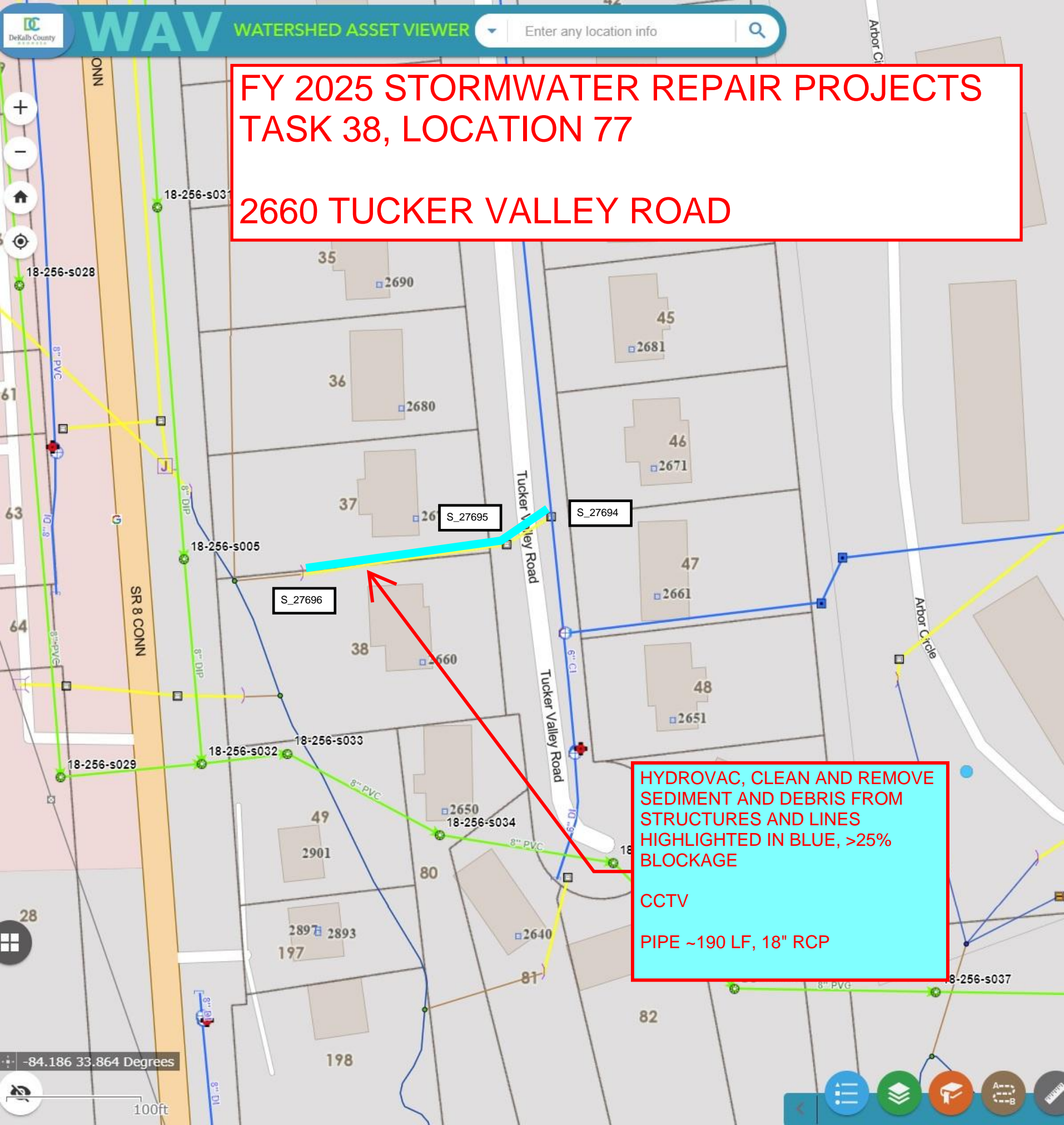
HYDROVAC, CLEAN AND REMOVE  
SEDIMENT AND DEBRIS FROM  
STRUCTURES AND LINES  
HIGHLIGHTED IN BLUE, >25%  
BLOCKAGE

CCTV

PIPE ~45 LF, 18" RCP

FY 2026 STORMWATER REPAIR PROJECTS  
TASK 38, LOCATION 75

5682 EAST PONCE DE LEON AVENUE



# FY 2025 STORMWATER REPAIR PROJECTS TASK 38, LOCATION 77

## 2660 TUCKER VALLEY ROAD

HYDROVAC, CLEAN AND REMOVE  
SEDIMENT AND DEBRIS FROM  
STRUCTURES AND LINES  
HIGHLIGHTED IN BLUE, >25%  
BLOCKAGE

CCTV

PIPE ~190 LF, 18" RCP



## Request for Taxpayer Identification Number and Certification

Go to [www.irs.gov/FormW9](http://www.irs.gov/FormW9) for instructions and the latest information.

Give form to the  
requester. Do not  
send to the IRS.

**Before you begin.** For guidance related to the purpose of Form W-9, see *Purpose of Form*, below.

Print or type. See Specific Instructions on page 3.	1	Name of entity/individual. An entry is required. (For a sole proprietor or disregarded entity, enter the owner's name on line 1, and enter the business/disregarded entity's name on line 2.)		
	2	Business name/disregarded entity name, if different from above.		
	3a	Check the appropriate box for federal tax classification of the entity/individual whose name is entered on line 1. Check only <b>one</b> of the following seven boxes.  <input type="checkbox"/> Individual/sole proprietor <input type="checkbox"/> C corporation <input type="checkbox"/> S corporation <input type="checkbox"/> Partnership <input type="checkbox"/> Trust/estate  <input type="checkbox"/> LLC. Enter the tax classification (C = C corporation, S = S corporation, P = Partnership) _____ <b>Note:</b> Check the "LLC" box above and, in the entry space, enter the appropriate code (C, S, or P) for the tax classification of the LLC, unless it is a disregarded entity. A disregarded entity should instead check the appropriate box for the tax classification of its owner.  <input type="checkbox"/> Other (see Instructions) _____	4	Exemptions (codes apply only to certain entities, not individuals; see instructions on page 3):  Exempt payee code (if any) _____  Exemption from Foreign Account Tax Compliance Act (FATCA) reporting code (if any) _____  (Applies to accounts maintained outside the United States.)
	3b	If on line 3a you checked "Partnership" or "Trust/estate," or checked "LLC" and entered "P" as its tax classification, and you are providing this form to a partnership, trust, or estate in which you have an ownership interest, check this box if you have any foreign partners, owners, or beneficiaries. See Instructions . . . . . <input type="checkbox"/>		
	5	Address (number, street, and apt. or suite no.). See instructions.	Requester's name and address (optional)	
6	City, state, and ZIP code			
7	List account number(s) here (optional)			

### Part I Taxpayer Identification Number (TIN)

Enter your TIN in the appropriate box. The TIN provided must match the name given on line 1 to avoid backup withholding. For individuals, this is generally your social security number (SSN). However, for a resident alien, sole proprietor, or disregarded entity, see the instructions for Part I, later. For other entities, it is your employer identification number (EIN). If you do not have a number, see *How to get a TIN*, later.

**Note:** If the account is in more than one name, see the instructions for line 1. See also *What Name and Number To Give the Requester* for guidelines on whose number to enter.

Social security number									
				-			-		
or									
Employer identification number									
				-					

### Part II Certification

Under penalties of perjury, I certify that:

1. The number shown on this form is my correct taxpayer identification number (or I am waiting for a number to be issued to me); and
2. I am not subject to backup withholding because (a) I am exempt from backup withholding, or (b) I have not been notified by the Internal Revenue Service (IRS) that I am subject to backup withholding as a result of a failure to report all interest or dividends, or (c) the IRS has notified me that I am no longer subject to backup withholding; and
3. I am a U.S. citizen or other U.S. person (defined below); and
4. The FATCA code(s) entered on this form (if any) indicating that I am exempt from FATCA reporting is correct.

**Certification instructions.** You must cross out item 2 above if you have been notified by the IRS that you are currently subject to backup withholding because you have failed to report all interest and dividends on your tax return. For real estate transactions, item 2 does not apply. For mortgage interest paid, acquisition or abandonment of secured property, cancellation of debt, contributions to an individual retirement arrangement (IRA), and, generally, payments other than interest and dividends, you are not required to sign the certification, but you must provide your correct TIN. See the instructions for Part II, later.

Sign Here	Signature of U.S. person	Date

## General Instructions

Section references are to the Internal Revenue Code unless otherwise noted.

**Future developments.** For the latest information about developments related to Form W-9 and its instructions, such as legislation enacted after they were published, go to [www.irs.gov/FormW9](http://www.irs.gov/FormW9).

## What's New

Line 3a has been modified to clarify how a disregarded entity completes this line. An LLC that is a disregarded entity should check the appropriate box for the tax classification of its owner. Otherwise, it should check the "LLC" box and enter its appropriate tax classification.

New line 3b has been added to this form. A flow-through entity is required to complete this line to indicate that it has direct or indirect foreign partners, owners, or beneficiaries when it provides the Form W-9 to another flow-through entity in which it has an ownership interest. This change is intended to provide a flow-through entity with information regarding the status of its indirect foreign partners, owners, or beneficiaries, so that it can satisfy any applicable reporting requirements. For example, a partnership that has any indirect foreign partners may be required to complete Schedules K-2 and K-3. See the Partnership Instructions for Schedules K-2 and K-3 (Form 1065).

## Purpose of Form

An individual or entity (Form W-9 requester) who is required to file an information return with the IRS is giving you this form because they



## GEORGIA SECURITY AND IMMIGRATION COMPLIANCE ACT AFFIDAVIT

**GEORGIA E-Verify and Public Contracts: The Georgia E-Verify law requires contractors and all sub-contractors on Georgia public contract (contracts with a government agency) for the physical performance of services over \$2,499 in value to enroll in E-Verify, regardless of the number of employees.**

<b>Contractor Name:</b>	
<b>Solicitation/Bid number or Project Description:</b>	

By executing this affidavit, the undersigned contractor verifies its compliance with O.C.G.A. § 13-10-91, stating affirmatively that the individual, entity or corporation which is engaged in the physical performance of services under a contract on behalf of the City of Tucker, Georgia has registered with, is authorized to use and uses the federal work authorization program commonly known as E-Verify, or any subsequent replacement program, in accordance with the applicable provisions and deadlines established in O.C.G.A. § 13-10-91.

Furthermore, the undersigned contractor will continue to use the federal work authorization program throughout the contract period as required by O.C.G.A. § 13-10-91(b) and the undersigned contractor will contract for the physical performance of services in satisfaction of such contract only with subcontractors who present and affidavit to the contractor with the information required by O.C.G.A. § 13-10-91(b). Contractor hereby attests that its federal work authorization user identification number and date of authorization are as follows:

\_\_\_\_\_  
Federal Work Authorization User Identification Number  
(EEV/E-Verify Company Identification Number)

\_\_\_\_\_  
Date of Authorization

\_\_\_\_\_  
Name of Contractor

**I hereby declare under penalty of perjury that the foregoing is true and correct**

\_\_\_\_\_  
Printed Name (of Authorized Officer or Agent of Contractor)

\_\_\_\_\_  
Title (of Authorized Officer or Agent of Contractor)

\_\_\_\_\_  
Signature (of Authorized Officer or Agent)

\_\_\_\_\_  
Date Signed

SUBSCRIBED AND SWORN BEFORE ME ON THIS THE

\_\_\_\_ DAY OF \_\_\_\_\_, 20\_\_\_\_

\_\_\_\_\_  
Notary Public

[NOTARY SEAL]

My Commission Expires: \_\_\_\_\_

## **BID BOND**

KNOW ALL MEN BY THESE PRESENTS, THAT

(Name of Contractor) \_\_\_\_\_ at

(Address of Contractor) \_\_\_\_\_

(Corporation, Partnership and / or Individual) hereinafter called Principal, and

(Name of Surety) \_\_\_\_\_

(Address of Surety) \_\_\_\_\_

A corporation of the State of \_\_\_\_\_, and a surety authorized by law to do

business in the State of Georgia, hereinafter called Surety, are held, and firmly bound unto

(Name of Oblige) City of Tucker Georgia

(Address of Oblige) 1975 Lakeside Parkway, Suite 350, Tucker, Georgia 30084

Hereinafter referred to as Oblige, in the penal sum of \_\_\_\_\_ Dollars (\$ \_\_\_\_\_) in lawful money of the United States, for the payment of which sum well and truly to be made, we bind ourselves, our heirs, executors, administrators and successors, jointly and severally, firmly by these presents.

WHEREAS, the Principal is about to submit, or has submitted, to the City of Tucker, Georgia, a proposal for furnishing materials, labor, and equipment for:

### **ITB # 2025-012**

### **STORMWATER SYSTEM HYDROVAC CLEANING AND VIDEO CAPTURE**

WHEREAS, the Principal desires to file this Bond in accordance with law in lieu of a certified Bidder's check otherwise required to accompany this Proposal.

NOW, THEREFORE, the conditions of this obligation are such that if the bid is accepted, the Principal shall within ten days after receipt of notification of the acceptance execute a Contract in accordance with the Bid and upon the terms, conditions, and prices set forth in the form and manner required by the City of Tucker, Georgia, and execute a sufficient and satisfactory Performance Bond and Payment Bond payable to the City of Tucker, Georgia, each in an amount of 100% of the total Contract Price, in form and with security satisfactory to said the City of Tucker, Georgia, and otherwise, to be and remain in full force and virtue in law; and the Surety shall, upon failure of the Principal to comply with any or all of the foregoing requirements within the time specified above, immediately pay to the City of Tucker, Georgia,

upon demand, the amount hereof in good and lawful money of the United States of America,  
not as a penalty, but as liquidated damages.

PROVIDED, FURTHER, that Principal and Surety agree and represent that this bond is executed  
pursuant, to and in accordance with the applicable provisions of the Official Code of Georgia  
Annotated, as Amended, including, but not limited to, O.C.G.A. § 13-10-20, et. Seg. And § 36- 91-50, et.  
Seg. and is intended to be and shall be constructed as a bond in compliance with  
the requirements thereof.

Signed, sealed, and dated this \_\_\_\_\_ day of \_\_\_\_\_ A.D., 20 \_\_\_\_.

ATTEST:

\_\_\_\_\_  
(Principal Secretary)

\_\_\_\_\_  
(Principal)

(SEAL)

BY: \_\_\_\_\_

\_\_\_\_\_  
(Witness to Principal)

\_\_\_\_\_  
(Address)

\_\_\_\_\_  
(Address)

\_\_\_\_\_  
(Surety)

ATTEST:

BY: \_\_\_\_\_  
(Attorney-in-Fact) and Resident Agent

\_\_\_\_\_  
(Attorney-in-Fact)

\_\_\_\_\_  
(Address)

(SEAL)

\_\_\_\_\_  
(Witness as to Surety)

\_\_\_\_\_



## PROPOSED SUBCONTRACTOR FORM: ITB 2025-012

Please complete this form and return it as part of the submitted bid package.

Name of Bidder \_\_\_\_\_

**1. Subcontractor Name:** \_\_\_\_\_

% of Bid Amount: \_\_\_\_\_

Description of Work provided: \_\_\_\_\_

**2. Subcontractor Name:** \_\_\_\_\_

% of Bid Amount: \_\_\_\_\_

Description of Work provided: \_\_\_\_\_

**3. Subcontractor Name:** \_\_\_\_\_

% of Bid Amount: \_\_\_\_\_

Description of Work provided: \_\_\_\_\_

**4. Subcontractor Name:** \_\_\_\_\_

% of Bid Amount: \_\_\_\_\_

Description of Work provided: \_\_\_\_\_

**DUPLICATE IF NEEDED**



## REFERENCES FORM: ITB 2025-012

Please complete this form and return it as part of the submitted bid package.

Name of Bidder \_\_\_\_\_

### REFERENCE #1

Contact Name: \_\_\_\_\_

Contact Number/Email \_\_\_\_\_

Brief Description of work provided: \_\_\_\_\_

\_\_\_\_\_  
\_\_\_\_\_

### REFERENCE #2

Contact Name: \_\_\_\_\_

Contact Number/Email: \_\_\_\_\_

Brief Description of work provided: \_\_\_\_\_

\_\_\_\_\_  
\_\_\_\_\_

### REFERENCE #3

Contact Name: \_\_\_\_\_

Contact Number/Email: \_\_\_\_\_

Brief Description of work provided: \_\_\_\_\_

\_\_\_\_\_  
\_\_\_\_\_

**Please complete and submit in bid package**



## **OATH OF NON-COLLUSION**

COMES NOW, \_\_\_\_\_ (“Contractor”),  
[*name of Contractor*]

appearing by and through \_\_\_\_\_,  
[*name of individual with authority to bind Contractor*]

its \_\_\_\_\_ (“Individual And Representative Affiant”), and  
[*title*]

\_\_\_\_\_  
\_\_\_\_\_  
\_\_\_\_\_  
\_\_\_\_\_

[*insert the names of all those required to give the oath*]

(collectively, “Individual Affiants”), and each of the Individual And Representative Affiant and Individual Affiants, after first being duly sworn, deposes and says that:

1. Contractor has not directly or indirectly violated subsection (d) of the Official Code of Georgia Annotated Section 36-91-21, which provides as follows:

Whenever a public works construction contract for any governmental entity subject to the requirements of this chapter is to be let out by competitive sealed bid or proposal, no person, by himself or herself or otherwise, shall prevent or attempt to prevent competition in such bidding or proposals by any means whatever. No person who desires to procure such work for himself or herself or for another shall prevent or endeavor to prevent anyone from making a bid or proposal therefor by any means whatever, nor shall such person so desiring the work cause or induce another to withdraw a bid or proposal for the work.

Code Section 36-91-21(d) also applies to municipal street system contracts pursuant to Official Code of Georgia Annotated Section 32-4-122.

2. Individual And Representative Affiant is the officer of Contractor whose duty it is to make the payment.

3. If Contractor is a partnership, then Individual and Representative Affiant and Individual Affiants together constitute all of the partners and any officer, agent or other person who may have represented or acted for Contractor in bidding for or procuring the contract.

4. If Contractor is a corporation, then Individual and Representative Affiant and Individual Affiants together constitute all officers, agents, or other persons who may have acted for or represented Contractor in bidding for or procuring the contract.

Further affiants sayeth not.

This \_\_\_\_ day of \_\_\_\_\_, 20\_\_\_\_.

By: \_\_\_\_\_, individually and on behalf of Contractor  
[signature of Individual And Representative Affiant]

Name: \_\_\_\_\_

Title: \_\_\_\_\_

*Individual Affiants' signatures and names:*

\_\_\_\_\_  
Name:

\_\_\_\_\_  
Name:

\_\_\_\_\_  
Name:

\_\_\_\_\_  
Name:

\_\_\_\_\_  
Name:

\_\_\_\_\_  
Name:

Subscribed and Sworn before me on this  
\_\_\_\_ day of \_\_\_\_\_, 20\_\_\_\_.

\_\_\_\_\_  
NOTARY PUBLIC  
My Commission Expires:

\_\_\_\_\_



# Contact Information Form

Please fill out this form with the appropriate contact information for your company.

Full Legal Name of Company: \_\_\_\_\_

Date: \_\_\_\_\_

Contractor Information:

Primary Contact Person: \_\_\_\_\_

Title: \_\_\_\_\_ Telephone Number: \_\_\_\_\_

E-mail Address: \_\_\_\_\_

Secondary Contact Person: \_\_\_\_\_

Title: \_\_\_\_\_ Telephone Number: \_\_\_\_\_

E-mail Address: \_\_\_\_\_

Preferred Contact for Administration: (i.e. Document Processing) (Choose one)

☐ Primary Contact

☐ Secondary Contact

Address: \_\_\_\_\_

City / State / Zip: \_\_\_\_\_

Mailing Address (If different than above): \_\_\_\_\_

City / State / Zip: \_\_\_\_\_

Federal Employee ID Number (FEIN): \_\_\_\_\_