

# CITY OF TUCKER

## ACKNOWLEDGE RECEIPT OF ADDENDUM #2

Publish Date: May 26, 2026

ITB #2026-013

SR 410/US 78 @ CR 9476/MOUNTAIN IND BLVD  
ROADWAY IMPROVEMENT PROJECT PI 0017399

**Please complete this page and include this page only in bid submittal.**

**I hereby acknowledge receipt of the supplement pertaining to the  
above referenced bid.**

COMPANY NAME: \_\_\_\_\_

CONTACT PERSON: \_\_\_\_\_

ADDRESS: \_\_\_\_\_

CITY: \_\_\_\_\_ STATE: \_\_\_\_\_ ZIP: \_\_\_\_\_

PHONE: \_\_\_\_\_ FAX: \_\_\_\_\_

EMAIL ADDRESS: \_\_\_\_\_

\_\_\_\_\_

SIGNATURE

DATE

ITB #2026-013  
ADDENDUM #2

**This addendum contains:**

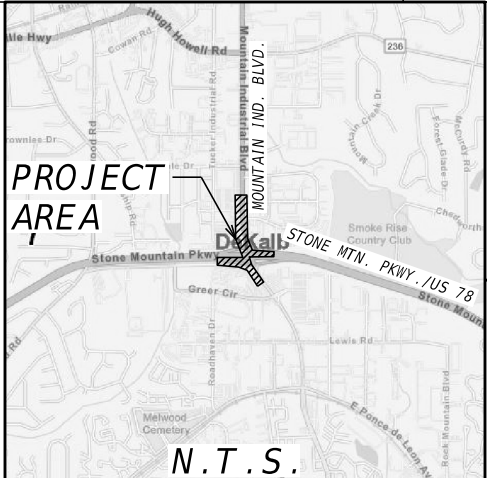
- 1. Responses to Round 2 Questions**
- 2. Revised Cost Proposal. Calculation Correction made to pay items 362, 363. and 364. No changes were made to line items or quantities. This Bid Schedule must be used for Bid Submittal. Separate Excel file name: PI 0017399 MIB - PS&E Bid Shedule-Addendum#2**
- 3. Plan Updates:**
  - a. Sheet 01-0001**
  - b. Sheet 03-0001**
  - c. Sheet 23-0040**
  - d. Sheet 31-0001**
- 4. End Area Volume Report**
- 5. Utility Schedule – Ga Power**
- 6. Utility Schedule – Atlanta Gas**

	<b>QUESTION</b>	<b>ANSWER</b>
1	Will the City of Tucker be providing any earthwork, UAS reports, and/or Geotech reports?	Earthwork calculations and utility schedules are included in this addendum. Geotechnical reports were not required for the project.
2	Will the City of Tucker provide a plan holders list for this project?	The City does not require Bid Intents and does not otherwise maintain a plan holders list.
3	Cant the City of Tucker provide a pay item for CONCRETE SIDE BARRIER, TP 2-SA?	Concrete side barrier TP 2-SA is not applicable. The plans for the wall envelope have been revised according to TP 2-S standards and are included in this addendum.
4	As per the Bid Schedule: <ul style="list-style-type: none"> <li>• Line Item 439-0020 – PLAIN PC CONC PVMT, CL 3 CONC, 9 INCH THK</li> <li>• Line Item 439-0024 – PLAIN PC CONC PVMT, CL 3 CONC, 11 INCH THK</li> </ul> The bid schedule specifies Class 3 Concrete for the above items; however, the Typical Sections (Sheets 12 through 15) indicate Class 1 Concrete. Could you please confirm which concrete class should	Class 1 concrete should be used on the exit ramps.

ITB #2026-013  
ADDENDUM #2

	be used for these pavement sections and bid items?	
5	Please confirm the required method for eradication/removal of the existing striping. Should it be performed by hydro blasting, sand blasting, or simple grinding?	Striping eradication should be done by hydroblasting.
6	Will a Shuttle Buggy or MTV be required for all paving operations?	No.
7	As per Plan 38-0008, the 24-inch curb and gutter are specified as Class A Concrete. Could you please confirm whether the 30-inch curb and gutter shall also be Class A Concrete or if it shall be Class B Concrete?	Class B Concrete
8	Could you please provide the structural drawings/details for the Type 1 Structural Overhead Sign?	Details for the overhead sign will be submitted by the selected contractor and approved by the City.

REVISED COST PROPOSAL PROVIDED IN EXCEL FILE PUBLISHED ALONG WITH ADDENDUM 2.  
FILE NAME: PI 0017399 MIB - PS&E Bid Shedule-Addendum#2



LOCATION SKETCH

# CITY OF TUCKER, GEORGIA

## PLAN AND PROFILE OF PROPOSED US 78/SR 410 AT CR 9476/MOUNTAIN INDUSTRIAL BLVD INTERSECTION IMPROVEMENT

FEDERAL AID PROJECT

DEKALB COUNTY

FEDERAL ROUTE No.: 78  
STATE ROUTE No.: 410, SR 8 CONN  
P.I. No.: 0017399

**DESIGN DATA:**  
 TRAFFIC A.D.T.: 39,000(2027)  
 TRAFFIC A.D.T.: 47,600(2047)  
 TRAFFIC D.H.V.: 3,765  
 DIRECTIONAL DIST: 50%  
 % TRUCKS: 9.5%  
 24 HR. TRUCKS %: 8.5%  
 SPEED DESIGN: 45 MPH

LOCATION & DESIGN  
 APPROVAL DATE: 3/6/2025

FUNCTIONAL CLASS:  
 PRINCIPAL ARTERIAL

THIS PROJECT IS 100% IN  
 DEKALB COUNTY AND IS  
 100% IN CONG. DIST. NO. 004.

PROJECT DESIGNATION: EXEMPT

THIS PROJECT HAS BEEN PREPARED  
 USING THE HORIZONTAL GEORGIA  
 COORDINATE SYSTEM OF 1984 (NAD  
 1983)/94 WEST ZONE, AND THE NORTH  
 AMERICAN VERTICAL DATUM (NAVD)  
 OF 1988.

THIS PROJECT CONTAINS POST CONSTRUCTION BMPS

THE DATA, TOGETHER WITH ALL OTHER INFORMATION SHOWN ON THESE PLANS OR IN ANYWAY  
 INDICATED THEREBY, WHETHER BY DRAWINGS OR NOTES, OR IN ANY OTHER MANNER, ARE BASED  
 UPON FIELD INVESTIGATIONS AND ARE BELIEVED TO BE INDICATIVE OF ACTUAL CONDITIONS.  
 HOWEVER, THE SAME ARE SHOWN AS INFORMATION ONLY, ARE NOT GUARANTEED, AND DO NOT  
 BIND THE DEPARTMENT OF TRANSPORTATION IN ANY WAY. THE ATTENTION OF BIDDER IS  
 SPECIFICALLY DIRECTED TO SUBSECTIONS 102.04, 102.05, AND 104.03 OF THE SPECIFICATIONS.

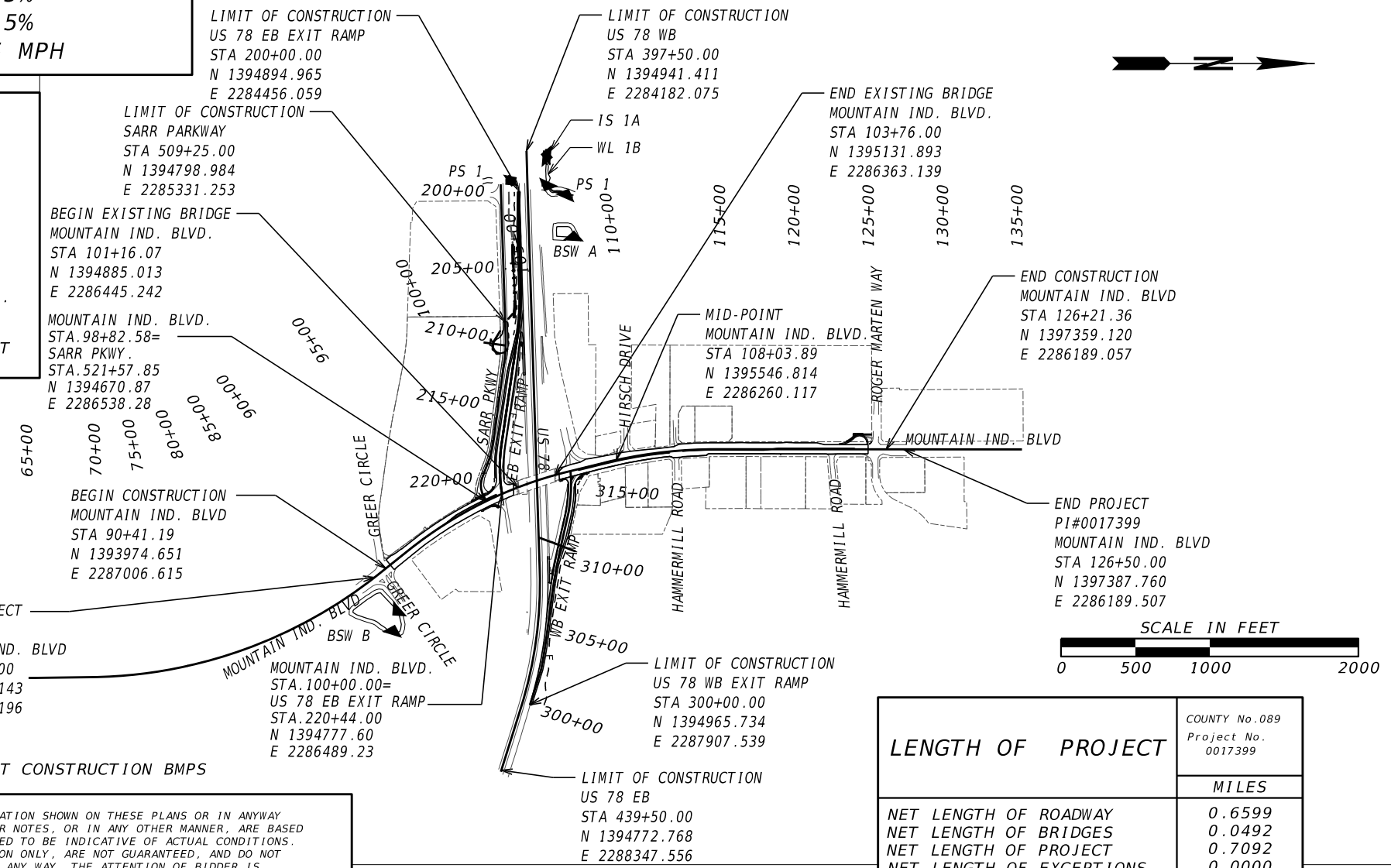
NOTE :  
 ALL REFERENCES IN THIS DOCUMENT, WHICH INCLUDES ALL PAPERS,  
 WRITINGS, DOCUMENTS, DRAWINGS, OR PHOTOGRAPHS USED, OR TO BE  
 USED IN CONNECTION WITH THIS DOCUMENT, TO " STATE HIGHWAY  
 DEPARTMENT OF GEORGIA ", " STATE HIGHWAY DEPARTMENT ", " GEORGIA  
 STATE HIGHWAY DEPARTMENT ", " HIGHWAY DEPARTMENT ", OR  
 " DEPARTMENT " WHEN THE CONTEXT THEREOF MEANS THE STATE  
 HIGHWAY DEPARTMENT OF GEORGIA, AND SHALL BE DEEMED TO MEAN  
 THE DEPARTMENT OF TRANSPORTATION.

THESE PLANS HAVE BEEN PREPARED IN ACCORDANCE WITH THE 2026 CONSTRUCTION  
 STANDARDS AND DETAILS BOOK AND ATTACHED APPLICABLE REVISIONS. THE 2026  
 CONSTRUCTION STANDARDS AND DETAILS BOOK IS AVAILABLE AT:  
<https://mydocs.dot.ga.gov/info/gdotpubs/ConstructionStandardsAndDetails/Forms/AllItems.aspx>  
 ANY REVISIONS CONTAINED WITHIN THIS PLAN SET SUPERSEDE THE 2026 CONSTRUCTION  
 STANDARDS AND DETAILS BOOK WHICH THEY REVISE OR IN WHICH THERE IS A CONFLICT.



PLANS PREPARED BY:

DESIGN



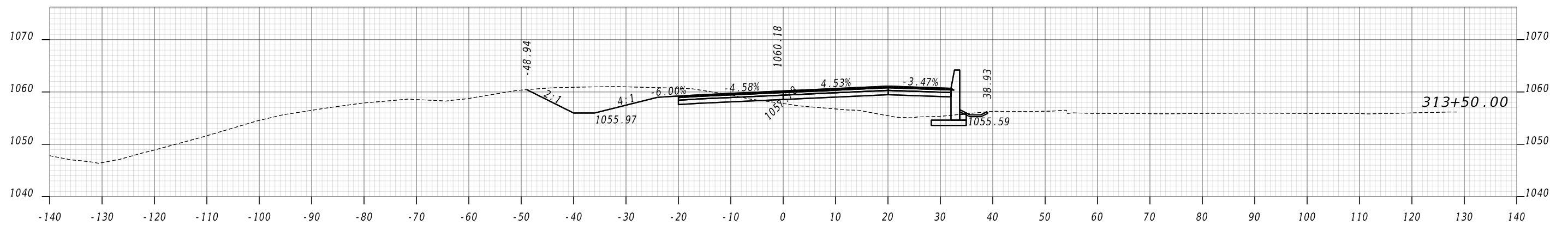
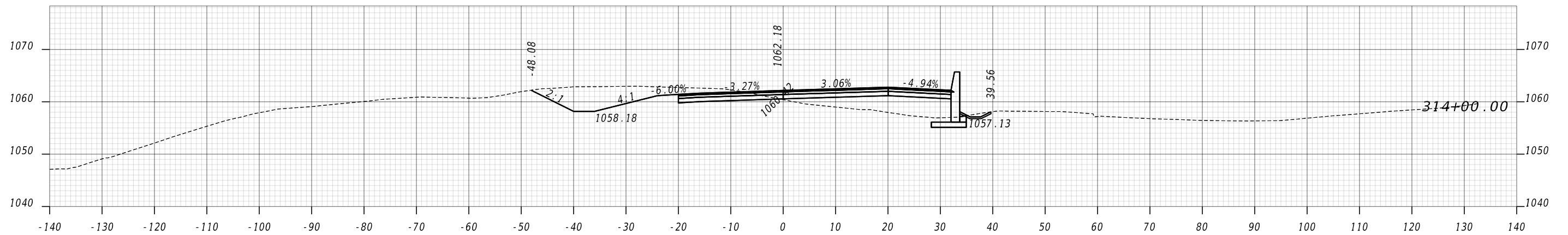
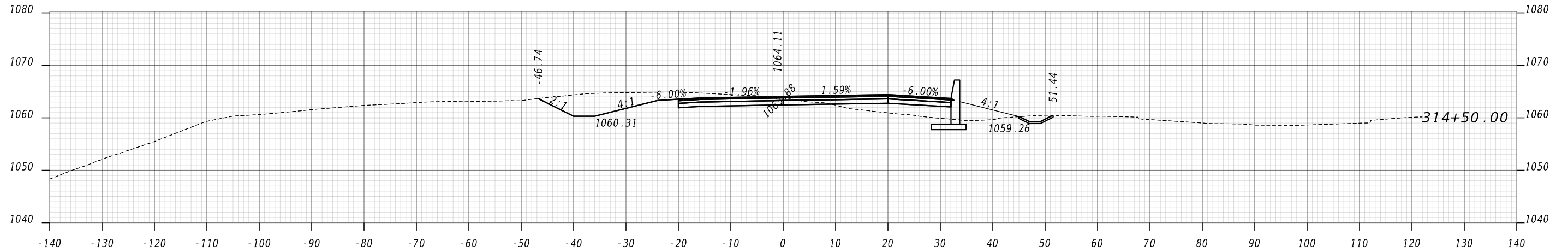
LENGTH OF PROJECT	COUNTY No. 089 Project No. 0017399
	MILES
NET LENGTH OF ROADWAY	0.6599
NET LENGTH OF BRIDGES	0.0492
NET LENGTH OF PROJECT	0.7092
NET LENGTH OF EXCEPTIONS	0.0000
GROSS LENGTH OF PROJECT	0.7092

PLANS COMPLETED 01-16-2026	
REVISIONS 5/5/26, 5/20/26	

DRAWING No.

01-0001





AMENDMENT

**ATLAS** 

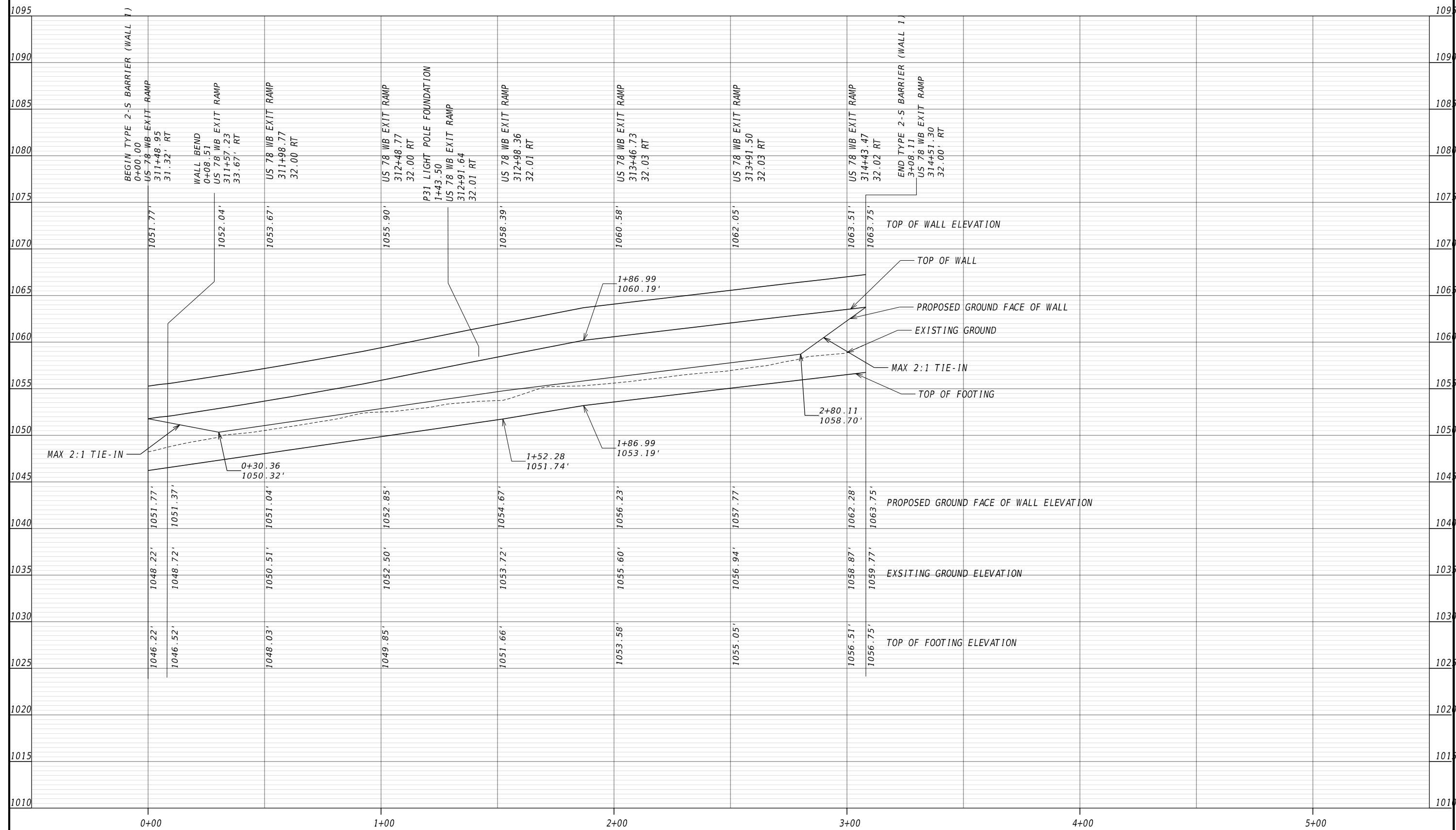
2450 Commerce Avenue  
Suite 100  
Duluth, Georgia 30096  
770.263.5945

VERTICAL 1" = 20'  
HORIZONTAL 1" = 50'

REVISION DATES	
5/20/2026	

EARTHWORK CROSS SECTIONS  
US 78 WESTBOUND EXIT RAMP  
CITY OF TUCKER

CHECKED:	DATE:	DRAWING No.
BACKCHECKED:	DATE:	23-0040
CORRECTED:	DATE:	
VERIFIED:	DATE:	



AMENDMENT

**ATLAS**  
 2450 Commerce Avenue  
 Suite 100  
 Duluth, Georgia 30096  
 770.263.5945

VERTICAL 1" = 10'  
 HORIZONTAL 1" = 40'

REVISION DATES	
5/20/2026	

RETAINING WALL ENVELOPE  
 US 78 AT MOUNTAIN IND. BLVD.  
 CITY OF TUCKER

CHECKED:	DATE:	DRAWING No.
BACKCHECKED:	DATE:	31-0001
CORRECTED:	DATE:	
VERIFIED:	DATE:	

# End Area Volume Report

Report Created: Thursday, May 21, 2026  
Time: 7:15:52 PM

**Cross Section Set Name:** Mountain Industrial BLVD

**Alignment Name:** Mountain Industrial BLVD

**Input Grid Factor:**     **Note:** All units in this report are in feet, square feet and cubic yards unless specified otherwise.

Baseline Station	----- Station Quantities -----								Mass Ordinate
	----- Cut -----				----- Fill -----				
	Factor	Area	Volume	Adjusted	Factor	Area	Volume	Adjusted	
64+93.60	1.00	0.000	0.000	0.000	1.00	0.000	0.000	0.000	0.000
65+00.00	1.00	0.000	0.000	0.000	1.00	0.000	0.000	0.000	0.000
65+50.00	1.00	0.000	0.000	0.000	1.00	0.000	0.000	0.000	0.000
66+00.00	1.00	0.000	0.000	0.000	1.00	0.000	0.000	0.000	0.000
66+50.00	1.00	0.000	0.000	0.000	1.00	0.000	0.000	0.000	0.000
67+00.00	1.00	0.000	0.000	0.000	1.00	0.000	0.000	0.000	0.000
67+50.00	1.00	0.000	0.000	0.000	1.00	0.000	0.000	0.000	0.000
68+00.00	1.00	0.000	0.000	0.000	1.00	0.000	0.000	0.000	0.000
68+50.00	1.00	0.000	0.000	0.000	1.00	0.000	0.000	0.000	0.000
69+00.00	1.00	0.000	0.000	0.000	1.00	0.000	0.000	0.000	0.000
69+50.00	1.00	0.000	0.000	0.000	1.00	0.000	0.000	0.000	0.000
70+00.00	1.00	0.000	0.000	0.000	1.00	0.000	0.000	0.000	0.000
70+50.00	1.00	0.000	0.000	0.000	1.00	0.000	0.000	0.000	0.000
71+00.00	1.00	0.000	0.000	0.000	1.00	0.000	0.000	0.000	0.000
71+50.00	1.00	0.000	0.000	0.000	1.00	0.000	0.000	0.000	0.000
72+00.00	1.00	0.000	0.000	0.000	1.00	0.000	0.000	0.000	0.000
72+50.00	1.00	0.000	0.000	0.000	1.00	0.000	0.000	0.000	0.000
73+00.00	1.00	0.000	0.000	0.000	1.00	0.000	0.000	0.000	0.000
73+50.00	1.00	0.000	0.000	0.000	1.00	0.000	0.000	0.000	0.000
74+00.00	1.00	0.000	0.000	0.000	1.00	0.000	0.000	0.000	0.000
74+50.00	1.00	0.000	0.000	0.000	1.00	0.000	0.000	0.000	0.000
75+00.00	1.00	0.000	0.000	0.000	1.00	0.000	0.000	0.000	0.000
75+50.00	1.00	0.000	0.000	0.000	1.00	0.000	0.000	0.000	0.000
76+00.00	1.00	0.000	0.000	0.000	1.00	0.000	0.000	0.000	0.000
76+50.00	1.00	0.000	0.000	0.000	1.00	0.000	0.000	0.000	0.000
77+00.00	1.00	0.000	0.000	0.000	1.00	0.000	0.000	0.000	0.000
77+50.00	1.00	0.000	0.000	0.000	1.00	0.000	0.000	0.000	0.000
78+00.00	1.00	0.000	0.000	0.000	1.00	0.000	0.000	0.000	0.000
78+50.00	1.00	0.000	0.000	0.000	1.00	0.000	0.000	0.000	0.000
79+00.00	1.00	0.000	0.000	0.000	1.00	0.000	0.000	0.000	0.000
79+50.00	1.00	0.000	0.000	0.000	1.00	0.000	0.000	0.000	0.000
80+00.00	1.00	0.000	0.000	0.000	1.00	0.000	0.000	0.000	0.000

Baseline Station	----- Station Quantities -----								Mass Ordinate
	----- Cut -----				----- Fill -----				
	Factor	Area	Volume	Adjusted	Factor	Area	Volume	Adjusted	
80+50.00	1.00	0.000	0.000	0.000	1.00	0.000	0.000	0.000	0.000
81+00.00	1.00	0.000	0.000	0.000	1.00	0.000	0.000	0.000	0.000
81+50.00	1.00	0.000	0.000	0.000	1.00	0.000	0.000	0.000	0.000
82+00.00	1.00	0.000	0.000	0.000	1.00	0.000	0.000	0.000	0.000
82+50.00	1.00	0.000	0.000	0.000	1.00	0.000	0.000	0.000	0.000
83+00.00	1.00	0.000	0.000	0.000	1.00	0.000	0.000	0.000	0.000
83+50.00	1.00	0.000	0.000	0.000	1.00	0.000	0.000	0.000	0.000
84+00.00	1.00	0.000	0.000	0.000	1.00	0.000	0.000	0.000	0.000
84+50.00	1.00	0.000	0.000	0.000	1.00	0.000	0.000	0.000	0.000
85+00.00	1.00	0.000	0.000	0.000	1.00	0.000	0.000	0.000	0.000
85+50.00	1.00	0.000	0.000	0.000	1.00	0.000	0.000	0.000	0.000
86+00.00	1.00	0.000	0.000	0.000	1.00	0.000	0.000	0.000	0.000
86+50.00	1.00	0.000	0.000	0.000	1.00	0.000	0.000	0.000	0.000
87+00.00	1.00	0.000	0.000	0.000	1.00	0.000	0.000	0.000	0.000
87+50.00	1.00	0.000	0.000	0.000	1.00	0.000	0.000	0.000	0.000
88+00.00	1.00	0.000	0.000	0.000	1.00	0.000	0.000	0.000	0.000
88+50.00	1.00	0.000	0.000	0.000	1.00	0.000	0.000	0.000	0.000
89+00.00	1.00	0.000	0.000	0.000	1.00	0.000	0.000	0.000	0.000
89+50.00	1.00	0.000	0.000	0.000	1.00	0.000	0.000	0.000	0.000
90+00.00	1.00	0.000	0.000	0.000	1.00	0.000	0.000	0.000	0.000
90+50.00	1.00	0.000	0.000	0.000	1.00	0.000	0.000	0.000	0.000
91+00.00	1.00	0.000	0.000	0.000	1.00	0.000	0.000	0.000	0.000
91+50.00	1.00	12.893	11.938	11.938	1.00	0.000	0.000	0.000	11.938
92+00.00	1.00	16.634	27.340	27.340	1.00	0.000	0.000	0.000	39.277
92+50.00	1.00	15.471	29.727	29.727	1.00	0.000	0.000	0.000	69.004
93+00.00	1.00	8.977	22.637	22.637	1.00	0.000	0.000	0.000	91.641
93+50.00	1.00	6.563	14.389	14.389	1.00	0.018	0.016	0.016	106.014
94+00.00	1.00	7.157	12.704	12.704	1.00	1.163	1.093	1.093	117.625
94+50.00	1.00	7.304	13.390	13.390	1.00	0.222	1.283	1.283	129.732
95+00.00	1.00	10.991	16.939	16.939	1.00	0.000	0.206	0.206	146.466
95+50.00	1.00	15.621	24.641	24.641	1.00	0.000	0.000	0.000	171.106
96+00.00	1.00	16.779	30.000	30.000	1.00	0.000	0.000	0.000	201.106
96+50.00	1.00	24.862	38.556	38.556	1.00	0.000	0.000	0.000	239.663
97+00.00	1.00	26.567	47.619	47.619	1.00	0.000	0.000	0.000	287.282
97+50.00	1.00	30.652	52.981	52.981	1.00	0.000	0.000	0.000	340.262
98+00.00	1.00	24.045	50.645	50.645	1.00	0.988	0.915	0.915	389.993
98+50.00	1.00	13.179	34.466	34.466	1.00	2.037	2.801	2.801	421.659
99+00.00	1.00	18.912	29.714	29.714	1.00	0.820	2.646	2.646	448.727
99+50.00	1.00	18.756	34.878	34.878	1.00	0.000	0.760	0.760	482.846
100+00.00	1.00	20.001	35.886	35.886	1.00	0.000	0.000	0.000	518.732
100+50.00	1.00	13.802	31.299	31.299	1.00	0.000	0.000	0.000	550.031

Baseline Station	----- Station Quantities -----								Mass Ordinate
	----- Cut -----				----- Fill -----				
	Factor	Area	Volume	Adjusted	Factor	Area	Volume	Adjusted	
101+00.00	1.00	0.000	12.780	12.780	1.00	0.000	0.000	0.000	562.811
101+50.00	1.00	0.000	0.000	0.000	1.00	0.000	0.000	0.000	562.811
102+00.00	1.00	0.000	0.000	0.000	1.00	0.000	0.000	0.000	562.811
102+50.00	1.00	0.000	0.000	0.000	1.00	0.000	0.000	0.000	562.811
103+00.00	1.00	0.000	0.000	0.000	1.00	0.000	0.000	0.000	562.811
103+50.00	1.00	0.000	0.000	0.000	1.00	0.000	0.000	0.000	562.811
104+00.00	1.00	13.042	12.076	12.076	1.00	0.084	0.078	0.078	574.809
104+50.00	1.00	15.484	26.413	26.413	1.00	0.000	0.078	0.078	601.145
105+00.00	1.00	10.946	24.473	24.473	1.00	0.000	0.000	0.000	625.618
105+50.00	1.00	19.683	28.360	28.360	1.00	0.000	0.000	0.000	653.978
106+00.00	1.00	25.135	41.498	41.498	1.00	0.000	0.000	0.000	695.475
106+50.00	1.00	16.416	38.473	38.473	1.00	0.000	0.000	0.000	733.948
107+00.00	1.00	15.277	29.345	29.345	1.00	0.000	0.000	0.000	763.292
107+50.00	1.00	6.436	20.104	20.104	1.00	2.746	2.542	2.542	780.855
108+00.00	1.00	4.363	9.999	9.999	1.00	3.459	5.745	5.745	785.109
108+50.00	1.00	11.783	14.950	14.950	1.00	0.712	3.862	3.862	796.197
109+00.00	1.00	13.458	23.372	23.372	1.00	0.013	0.671	0.671	818.899
109+50.00	1.00	6.473	18.455	18.455	1.00	0.120	0.123	0.123	837.231
110+00.00	1.00	7.651	13.078	13.078	1.00	0.013	0.123	0.123	850.187
110+50.00	1.00	7.982	14.475	14.475	1.00	0.000	0.012	0.012	864.650
111+00.00	1.00	12.002	18.504	18.504	1.00	0.000	0.000	0.000	883.153
111+50.00	1.00	14.206	24.266	24.266	1.00	0.000	0.000	0.000	907.420
112+00.00	1.00	10.715	23.075	23.075	1.00	0.000	0.000	0.000	930.494
112+50.00	1.00	15.273	24.063	24.063	1.00	0.000	0.000	0.000	954.557
113+00.00	1.00	14.394	27.469	27.469	1.00	0.000	0.000	0.000	982.026
113+50.00	1.00	12.963	25.330	25.330	1.00	0.000	0.000	0.000	1007.356
114+00.00	1.00	9.954	21.220	21.220	1.00	0.256	0.237	0.237	1028.339
114+50.00	1.00	7.902	16.533	16.533	1.00	0.042	0.276	0.276	1044.596
115+00.00	1.00	11.228	17.713	17.713	1.00	0.091	0.124	0.124	1062.185
115+50.00	1.00	12.563	22.028	22.028	1.00	0.000	0.085	0.085	1084.128
116+00.00	1.00	16.236	26.665	26.665	1.00	0.000	0.000	0.000	1110.793
116+50.00	1.00	13.490	27.524	27.524	1.00	0.000	0.000	0.000	1138.318
117+00.00	1.00	11.732	23.354	23.354	1.00	0.000	0.000	0.000	1161.672
117+50.00	1.00	13.019	22.918	22.918	1.00	0.000	0.000	0.000	1184.590
118+00.00	1.00	12.755	23.865	23.865	1.00	0.000	0.000	0.000	1208.455
118+50.00	1.00	8.617	19.789	19.789	1.00	0.016	0.015	0.015	1228.230
119+00.00	1.00	11.187	18.337	18.337	1.00	0.418	0.402	0.402	1246.165
119+50.00	1.00	16.067	25.235	25.235	1.00	0.000	0.387	0.387	1271.013
120+00.00	1.00	23.129	36.292	36.292	1.00	0.000	0.000	0.000	1307.305
120+50.00	1.00	20.314	40.224	40.224	1.00	0.000	0.000	0.000	1347.530
121+00.00	1.00	17.134	34.674	34.674	1.00	0.000	0.000	0.000	1382.204

Baseline Station	----- Station Quantities -----								Mass Ordinate
	----- Cut -----				----- Fill -----				
	Factor	Area	Volume	Adjusted	Factor	Area	Volume	Adjusted	
121+50.00	1.00	17.171	31.764	31.764	1.00	0.000	0.000	0.000	1413.968
122+00.00	1.00	10.680	25.788	25.788	1.00	0.000	0.000	0.000	1439.755
122+50.00	1.00	9.973	19.122	19.122	1.00	0.000	0.000	0.000	1458.878
123+00.00	1.00	10.372	18.838	18.838	1.00	0.000	0.000	0.000	1477.716
123+50.00	1.00	31.492	38.764	38.764	1.00	0.917	0.849	0.849	1515.630
124+00.00	1.00	105.606	126.943	126.943	1.00	0.785	1.575	1.575	1640.998
124+50.00	1.00	155.236	241.520	241.520	1.00	0.000	0.726	0.726	1881.792
125+00.00	1.00	67.036	205.808	205.808	1.00	0.000	0.000	0.000	2087.600
125+50.00	1.00	0.000	62.071	62.071	1.00	0.000	0.000	0.000	2149.671
126+00.00	1.00	0.000	0.000	0.000	1.00	0.000	0.000	0.000	2149.671
126+50.00	1.00	0.000	0.000	0.000	1.00	0.000	0.000	0.000	2149.671
127+00.00	1.00	0.000	0.000	0.000	1.00	0.000	0.000	0.000	2149.671
127+50.00	1.00	0.000	0.000	0.000	1.00	0.000	0.000	0.000	2149.671
128+00.00	1.00	0.000	0.000	0.000	1.00	0.000	0.000	0.000	2149.671
Grand Total:			2177.297	2177.297			27.627	27.627	

# End Area Volume Report

Report Created: Friday, March 28, 2025

Time: 10:53:09 AM

**Cross Section Set Name:** US 78 Exit Ramp EB

**Alignment Name:** US 78 Exit Ramp EB

**Input Grid Factor:**

**Note:** All units in this report are in feet, square feet and cubic yards unless specified otherwise.

Baseline Station	----- Station Quantities -----								Mass Ordinate
	----- Cut -----				----- Fill -----				
	Factor	Area	Volume	Adjusted	Factor	Area	Volume	Adjusted	
200+00.00	1	0	0	0	1	0	0	0	0
200+50.00	1	26.25	24.305	24.305	1	15.497	14.349	14.349	9.956
201+00.00	1	28.404	50.605	50.605	1	27.827	40.115	40.115	20.446
201+50.00	1	31.879	55.818	55.818	1	33.784	57.048	57.048	19.216
202+00.00	1	34.05	61.046	61.046	1	41.202	69.431	69.431	10.83
202+17.12	1	33.766	61.471	61.471	1	47.717	77.816	77.816	0
202+50.00	1	33.221	62.288	62.288	1	60.23	93.918	93.918	-20.799
203+00.00	1	30.995	59.46	59.46	1	70.812	121.335	121.335	-82.675
203+50.00	1	33.088	59.337	59.337	1	63.605	124.46	124.46	-147.798
204+00.00	1	33.409	61.572	61.572	1	56.809	111.495	111.495	-197.721
205+00.00	1	34.92	126.536	126.536	1	34.73	169.517	169.517	-240.702
205+50.00	1	26.468	56.841	56.841	1	42.094	71.133	71.133	-254.994
206+00.00	1	29.359	51.691	51.691	1	25.702	62.775	62.775	-266.078
206+50.00	1	36.073	60.585	60.585	1	20.775	43.035	43.035	-248.527
207+00.00	1	47.179	77.085	77.085	1	15.512	33.599	33.599	-205.041
207+50.00	1	50.798	90.719	90.719	1	12.939	26.344	26.344	-140.666
208+00.00	1	48.405	91.855	91.855	1	20.597	31.052	31.052	-79.863
208+50.00	1	45.727	87.159	87.159	1	30.291	47.118	47.118	-39.821
209+00.00	1	41.037	80.337	80.337	1	56.232	80.114	80.114	-39.598
209+50.00	1	28.614	64.492	64.492	1	100.692	145.3	145.3	-120.406
210+00.00	1	26.573	51.099	51.099	1	145.062	227.55	227.55	-296.857
210+50.00	1	43.094	64.506	64.506	1	147.07	270.493	270.493	-502.843
210+67.40	1	35.867	25.439	25.439	1	36.582	59.167	59.167	-536.571
211+00.00	1	58.2	56.794	56.794	1	154.855	115.582	115.582	-595.359
211+50.00	1	92.131	139.196	139.196	1	153.076	285.121	285.121	-741.285
212+00.00	1	138.194	213.264	213.264	1	154.133	284.453	284.453	-812.474
212+50.00	1	144.043	261.331	261.331	1	149.443	281.089	281.089	-832.232
213+00.00	1	160.267	281.769	281.769	1	154.902	281.801	281.801	-832.263
213+50.00	1	167.192	303.203	303.203	1	160.104	291.672	291.672	-820.732
214+00.00	1	164.314	306.95	306.95	1	159.134	295.59	295.59	-809.372
214+50.00	1	150.902	291.866	291.866	1	159.077	294.64	294.64	-812.146
215+00.00	1	139.172	268.587	268.587	1	136.051	273.267	273.267	-816.826
215+50.00	1	132.41	251.465	251.465	1	98.196	216.895	216.895	-782.257
216+00.00	1	118.388	232.22	232.22	1	99.388	182.948	182.948	-732.984
216+50.00	1	110.958	212.357	212.357	1	94.05	179.109	179.109	-699.736
217+00.00	1	95.229	190.914	190.914	1	89.745	170.181	170.181	-679.003
217+50.00	1	80.333	162.558	162.558	1	86.636	163.316	163.316	-679.003
218+00.00	1	78.437	147.009	147.009	1	57.438	133.402	133.402	-665.396
218+50.00	1	105.749	170.543	170.543	1	16.797	68.737	68.737	-563.59
219+00.00	1	146.963	233.993	233.993	1	4.239	19.478	19.478	-349.075
219+50.00	1	169.954	293.442	293.442	1	7.474	10.845	10.845	-66.478
219+62.41	1	159.251	288.814	288.814	1	5.619	9.871	9.871	0
220+00.00	1	126.825	274.795	274.795	1	0	6.92	6.92	201.397
220+44.00	1	0	103.327	103.327	1	0	0	0	304.724

Grand Total:

6108.643 6108.643

5542.081 5542.081

# End Area Volume Report

Report Created: Friday, March 28, 2025  
Time: 10:56:38 AM

**Cross Section Set Name:** US 78 Exit Ramp WB

**Alignment Name:** US 78 Exit Ramp WB

**Input Grid Factor:**

**Note:** All units in this report are in feet, square feet and cubic yards unless specified otherwise.

Baseline Station	----- Station Quantities -----								Mass Ordinate
	----- Cut -----				----- Fill -----				
	Factor	Area	Volume	Adjusted	Factor	Area	Volume	Adjusted	
300+00.00	1	2.039	0	0	1	0	0	0	0
300+50.00	1	29.192	28.918	28.918	1	1.342	1.243	1.243	27.675
301+00.00	1	28.344	53.274	53.274	1	3.418	4.408	4.408	76.541
301+50.00	1	27.957	52.131	52.131	1	6.886	9.541	9.541	119.131
302+00.00	1	25.143	49.167	49.167	1	15.964	21.158	21.158	147.14
302+50.00	1	22.684	44.285	44.285	1	41.979	53.651	53.651	137.774
303+00.00	1	23.551	42.81	42.81	1	11.391	49.416	49.416	131.168
303+50.00	1	27.37	47.149	47.149	1	10.389	20.166	20.166	158.151
304+00.00	1	31.679	54.676	54.676	1	6.627	15.755	15.755	197.071
304+50.00	1	33.562	60.409	60.409	1	0.801	6.878	6.878	250.602
305+00.00	1	32.267	60.953	60.953	1	1.19	1.844	1.844	309.712
305+50.00	1	35.767	62.995	62.995	1	3.165	4.032	4.032	368.674
306+00.00	1	41.999	72.006	72.006	1	2.812	5.534	5.534	435.146
306+50.00	1	42.758	78.479	78.479	1	3.839	6.159	6.159	507.467
307+00.00	1	48.998	84.96	84.96	1	4.14	7.388	7.388	585.039
307+50.00	1	48.804	90.558	90.558	1	5.71	9.121	9.121	666.476
308+00.00	1	39.748	81.992	81.992	1	13.822	18.086	18.086	730.383
308+50.00	1	35.313	69.5	69.5	1	28.99	39.641	39.641	760.242
309+00.00	1	25.714	56.506	56.506	1	44.52	68.065	68.065	748.683
309+50.00	1	26.607	48.445	48.445	1	35.299	73.907	73.907	723.221
310+00.00	1	21.108	44.18	44.18	1	37.04	66.981	66.981	700.421
310+50.00	1	0.695	20.187	20.187	1	54.235	84.514	84.514	636.094
311+00.00	1	1.893	2.396	2.396	1	83.467	127.503	127.503	510.987
311+50.00	1	20.538	20.769	20.769	1	52.802	126.175	126.175	405.581
312+00.00	1	24.762	41.944	41.944	1	42.787	88.508	88.508	359.018
312+50.00	1	26.77	47.715	47.715	1	56.655	92.076	92.076	314.657
313+00.00	1	32.411	54.797	54.797	1	68.799	116.161	116.161	253.292
313+50.00	1	42.427	69.294	69.294	1	82.243	139.854	139.854	253.292
314+00.00	1	54.66	89.896	89.896	1	73.03	143.771	143.771	199.417
314+50.00	1	74.531	119.621	119.621	1	40.678	105.285	105.285	213.753
315+00.00	1	62.809	127.166	127.166	1	25.729	61.489	61.489	279.431
315+50.00	1	155.677	202.302	202.302	1	13.08	35.935	35.935	445.798
316+00.00	1	0	144.146	144.146	1	0	12.111	12.111	577.833
Grand Total:			2123.626	2123.626			1616.356	1616.356	

# End Area Volume Report

Report Created: Friday, March 28, 2025  
Time: 10:48:01 AM

**Cross Section Set Name:** MAIN\_P\_EOP\_SARR PKWY

**Alignment Name:** MAIN\_P\_EOP\_SARR PKWY

**Input Grid Factor:**

**Note:** All units in this report are in feet, square feet and cubic yards unless specified otherwise.

Baseline Station	----- Station Quantities -----									
	----- Cut -----				----- Fill -----				Mass	
	Factor	Area	Volume	Adjusted	Factor	Area	Volume	Adjusted	Ordnate	
509+25.00	1	51.248	0	0	1	0	0	0	0	0
509+50.00	1	52.048	47.822	47.822	1	0.044	0.021	0.021	47.802	
510+00.00	1	58.011	101.907	101.907	1	0.282	0.302	0.302	47.802	
510+50.00	1	156.345	198.478	198.478	1	0.25	0.492	0.492	245.787	
511+00.00	1	173.543	305.452	305.452	1	0	0.231	0.231	551.008	
511+50.00	1	0	160.688	160.688	1	0	0	0	711.696	
Grand Total:			814.347	814.347			1.046	1.046		

# End Area Volume Report

Report Created: Friday, March 28, 2025  
Time: 11:30:16 AM

**Cross Section Set Name:** Exit Ramp EB - STAGE 1B

**Alignment Name:** US 78 Exit Ramp EB

**Input Grid Factor:**

**Note:** All units in this report are in feet, square feet and cubic yards unless specified otherwise.

Baseline Station	----- Station Quantities -----								Mass Ordinate
	----- Cut -----				----- Fill -----				
	Factor	Area	Volume	Adjusted	Factor	Area	Volume	Adjusted	
200+00.00	1	0	0	0	1	0	0	0	0
200+50.00	1	26.25	24.306	24.306	1	15.496	14.348	14.348	9.958
201+00.00	1	28.404	50.605	50.605	1	27.834	40.12	40.12	20.443
201+50.00	1	31.879	55.817	55.817	1	33.784	57.054	57.054	19.206
202+00.00	1	33.978	60.979	60.979	1	41.889	70.068	70.068	10.117
202+15.65	1	33.741	61.368	61.368	1	47.628	77.73	77.73	0
202+50.00	1	33.221	62.222	62.222	1	60.23	94.554	94.554	-22.215
203+00.00	1	30.995	59.46	59.46	1	70.812	121.335	121.335	-84.09
203+50.00	1	33.088	59.337	59.337	1	63.605	124.46	124.46	-149.214
204+00.00	1	33.409	61.572	61.572	1	56.809	111.495	111.495	-199.137
204+50.00	1	35.867	64.145	64.145	1	36.582	86.474	86.474	-221.465
205+00.00	1	34.92	65.544	65.544	1	34.73	66.03	66.03	-221.951
205+50.00	1	26.468	56.841	56.841	1	42.094	71.133	71.133	-236.244
206+00.00	1	29.359	51.691	51.691	1	25.702	62.775	62.775	-247.327
206+50.00	1	36.073	60.585	60.585	1	20.775	43.035	43.035	-229.777
207+00.00	1	47.179	77.085	77.085	1	15.512	33.599	33.599	-186.291
207+50.00	1	50.798	90.719	90.719	1	12.939	26.344	26.344	-121.916
208+00.00	1	48.405	91.855	91.855	1	20.597	31.052	31.052	-61.113
208+50.00	1	45.727	87.159	87.159	1	30.291	47.118	47.118	-21.071
208+71.41	1	66.381	105.221	105.221	1	41.409	61.256	61.256	0
209+00.00	1	93.957	129.337	129.337	1	56.253	80.133	80.133	28.133
209+50.00	1	80.197	161.254	161.254	1	100.829	145.446	145.446	43.94
210+00.00	1	123.713	188.806	188.806	1	145.315	227.911	227.911	4.835
210+08.88	1	126.542	198.577	198.577	1	145.696	235.576	235.576	0
210+50.00	1	139.647	243.852	243.852	1	147.461	271.09	271.09	-22.402
211+00.00	1	159.388	276.885	276.885	1	158.864	283.634	283.634	-29.152
211+50.00	1	92.131	232.888	232.888	1	151.398	287.279	287.279	-83.543
212+00.00	1	138.194	213.264	213.264	1	143.317	272.884	272.884	-143.163
212+50.00	1	144.058	261.344	261.344	1	144.556	266.55	266.55	-148.368
213+00.00	1	160.267	281.782	281.782	1	148.58	271.423	271.423	-138.009
213+50.00	1	167.192	303.203	303.203	1	153.016	279.256	279.256	-114.061
214+00.00	1	164.317	306.953	306.953	1	151.055	281.548	281.548	-88.656
214+50.00	1	150.902	291.869	291.869	1	150.962	279.646	279.646	-76.432
215+00.00	1	139.172	268.587	268.587	1	128.406	258.674	258.674	-66.519
215+50.00	1	132.41	251.465	251.465	1	91.499	203.616	203.616	-18.67
215+65.34	1	128.109	245.562	245.562	1	92.132	193.719	193.719	0
216+00.00	1	118.388	232.22	232.22	1	93.562	171.353	171.353	42.197
216+50.00	1	110.958	212.357	212.357	1	89.217	169.239	169.239	85.315
217+00.00	1	95.229	190.914	190.914	1	84.742	161.072	161.072	115.156
217+50.00	1	80.333	162.558	162.558	1	83.247	155.545	155.545	122.169
218+00.00	1	78.435	147.008	147.008	1	55.103	128.102	128.102	141.076
218+50.00	1	105.749	170.541	170.541	1	16.797	66.574	66.574	245.043
219+00.00	1	146.963	233.993	233.993	1	4.239	19.478	19.478	459.558
219+50.00	1	169.956	293.443	293.443	1	7.474	10.845	10.845	742.157
220+00.00	1	127.687	275.595	275.595	1	0	6.92	6.92	1010.831
220+44.00	1	0	104.03	104.03	1	0	0	0	1114.861

Grand Total:

6514.07 6514.07

5399.21 5399.21

# End Area Volume Report

Report Created: Friday, March 28, 2025  
Time: 11:39:19 AM

**Cross Section Set Name:** Exit Ramp WB - STAGE 1B

**Alignment Name:** US 78 Exit Ramp WB

**Input Grid Factor:**

**Note:** All units in this report are in feet, square feet and cubic yards unless specified otherwise.

Baseline Station	----- Station Quantities -----								Mass Ordinate
	----- Cut -----				----- Fill -----				
	Factor	Area	Volume	Adjusted	Factor	Area	Volume	Adjusted	
300+00.00	1	2.039	0	0	1	0	0	0	0
300+50.00	1	29.191	28.917	28.917	1	1.344	1.245	1.245	27.672
301+00.00	1	28.344	53.273	53.273	1	3.418	4.41	4.41	76.536
301+50.00	1	27.957	52.13	52.13	1	6.886	9.541	9.541	119.125
302+00.00	1	25.143	49.167	49.167	1	15.964	21.158	21.158	147.134
302+50.00	1	22.684	44.285	44.285	1	41.979	53.651	53.651	137.768
303+00.00	1	23.551	42.81	42.81	1	26.263	63.188	63.188	117.39
303+50.00	1	27.37	47.148	47.148	1	10.39	33.938	33.938	130.6
304+00.00	1	31.679	54.675	54.675	1	6.627	15.757	15.757	169.518
304+50.00	1	33.562	60.409	60.409	1	4.343	10.158	10.158	219.769
305+50.00	1	35.739	128.335	128.335	1	3.165	13.903	13.903	334.2
306+00.00	1	41.974	71.957	71.957	1	2.812	5.534	5.534	400.623
306+50.00	1	42.696	78.399	78.399	1	3.838	6.158	6.158	472.864
307+00.00	1	49.064	84.963	84.963	1	4.143	7.39	7.39	550.437
307+50.00	1	31.367	74.472	74.472	1	5.71	9.123	9.123	615.787
308+00.00	1	13.232	41.295	41.295	1	13.822	18.086	18.086	638.996
308+50.00	1	0	12.252	12.252	1	31.878	42.315	42.315	608.933
309+00.00	1	0	0	0	1	40.092	66.638	66.638	542.295
309+50.00	1	0.329	0.304	0.304	1	32.669	67.371	67.371	475.228
310+00.00	1	1.561	1.75	1.75	1	35.465	63.088	63.088	475.228
310+50.00	1	5.242	6.299	6.299	1	53.461	82.339	82.339	399.187
311+00.00	1	28.786	31.507	31.507	1	82.506	125.895	125.895	304.799
311+50.00	1	31.543	55.861	55.861	1	48.202	121.026	121.026	239.634
312+00.00	1	30.444	57.396	57.396	1	46.914	88.07	88.07	208.96
312+50.00	1	30.788	56.697	56.697	1	60.553	99.506	99.506	166.151
313+00.00	1	29.769	56.071	56.071	1	73.21	123.855	123.855	98.367
313+50.00	1	27.632	53.148	53.148	1	86.314	147.708	147.708	3.807
313+51.93	1	27.706	53.141	53.141	1	85.963	147.852	147.852	0
314+00.00	1	29.55	52.946	52.946	1	77.226	151.427	151.427	-94.674
314+50.00	1	37.555	62.134	62.134	1	41.993	110.388	110.388	-142.927
315+00.00	1	24.981	57.904	57.904	1	25.853	62.82	62.82	-147.843
315+20.00	1	32.292	21.213	21.213	1	37.959	23.634	23.634	-150.265
Grand Total:			1490.858	1490.858			1797.172	1797.172	

# End Area Volume Report

Report Created: Friday, March 28, 2025  
Time: 11:18:17 AM

**Cross Section Set Name:** SARR PKWY - STAGE 1A

**Alignment Name:** MAIN\_P\_EOP\_SARR PKWY

**Input Grid Factor:**

**Note:** All units in this report are in feet, square feet and cubic yards unless specified otherwise.

Baseline Station	----- Station Quantities -----									
	----- Cut -----				----- Fill -----				Mass Ordinate	
	Factor	Area	Volume	Adjusted	Factor	Area	Volume	Adjusted		
509+80.00	1	50.535	0	0	1	0.102	0	0	0	0
510+00.00	1	58.011	40.202	40.202	1	0.282	0.142	0.142	40.06	
510+50.00	1	156.345	198.478	198.478	1	0.25	0.492	0.492	197.986	
511+00.00	1	173.543	305.452	305.452	1	0	0.231	0.231	503.206	
511+50.00	1	0	160.688	160.688	1	0	0	0	663.895	
Grand Total:			704.82	704.82			0.865	0.865		

**DEPARTMENT OF TRANSPORTATION  
STATE OF GEORGIA  
ATLANTA, GEORGIA 30334-1002**



<b>Schedule Type:</b> Original		
<b>Project:</b> 0017399	<b>County:</b> DeKalb	<b>Route Number:</b>
<b>Primary County:</b> DEKALB	<b>Primary County FIPS Code:</b> 089	<b>Constant State Code:</b> PROG
<b>Description:</b> SR 410/US 78 @ CR 9476/MOUNTAIN IND BLVD		

**A. SUMMARY OF UTILITY FACILITIES AND UTILITY ADJUSTMENT SCHEDULE.**

List of all existing facilities within project (exclude minor items)

Quantity, Type of facility, Type of service	Quantity in conflict	Units
6 , Poles ,	6	EA
1 , Transformer ,	1	EA
1 , Gang Switch ,	1	EA
4 , Lightning Arrester ,	4	EA
1241 , 3 PHASE OVERHEAD - 397 AL ,	1241	LF

Existing facility locations were identified using **Records, Maps and/or Field Review** dated:01-28-2025

This schedule is based on **Final.** dated:01-21-2025

If any changes are made to the plans after this date, which affect the utility, then this schedule may require modification.

Prepared By	title	Phone	Date
Jordan Pearce			11/12/2025 11:21:45 AM
<b>Comments :</b>			

**B. SPECIAL REQUIREMENTS (staging required, dependent activities, joint-use coordination, etc).**

See attached

**C. WORK PLAN - provide disposition of all existing and proposed facilities on project.**


Work Location	Description of utility work	Dependent activities	Plan Stage No	Duration	Average number of workers	Begin Day	End Day
<b>Preliminary Engineering</b>							
Entire Project	Preliminary Engineering, Entire Project.	See attached	N/A	180	1	-180	0
<b>Construction Engineering</b>							
Entire Project	Entire Project	See Attached	N/A	20	1	1	21
Entire Project	Construction Engineering 2	See Attached	N/A	20	1	21	41
Entire Project	Construction Engineering Entire Project	See Attached	N/A	404	1	1	405
<b>Right Of Way Acquisition</b>							
Entire Project	Right Of Way acquisition for GPC Work Locations: 53.01, 59.01, 54.01, 55.01.	See Attached	1	240	1	42	282
<b>Clearing &amp; Trimming</b>							
Entire Project	Clearing and Trimming - Tree Work	See Attached	1	22	1	283	305
<b>Material Procurement</b>							
Entire Project	Material Procurement	See Attached	1	30	1	283	313
<b>Construction</b>							
STATION #S 508+00 TO 521+00 LOCATIONS 7-59	Construction 1	See Attached	1	77	4	306	383
STATION #S 508+00 TO 521+00 LOCATIONS 7 - 59	Remove Old Poles	See Attached	1	20	4	384	404

**D. SCHEDULE SUMMARY FOR WORK PLAN.**

Exclude weekends, weather delays and non productive time:

Work Phase	Total estimated days	Prior to project award	After project award
Preliminary Engineering	180	180	0
Construction Engineering	444	0	405
Material Procurement	30	0	313
Right Of Way Acquisition	240	0	282
Clearing & Trimming	22	0	305
Temporary Work			
Construction	97	0	404
Splicing Or Tie In Work			
Service Considerations			

Project duration for non-concurrent activities in days: 405

Approved  
 Tucker City Engineer  
 Ken Hildebrandt 2/20/26  


**D. SCHEDULE SUMMARY FOR WORK PLAN.**

Exclude weekends, weather delays and non productive time:

Work Phase	Total estimated days	Prior to project award	After project award
Preliminary Engineering	60	60	0
Construction Engineering	60	0	61
Material Procurement	80	0	142
Right Of Way Acquisition			
Clearing & Trimming			
Temporary Work			
Construction	100	0	243
Splicing Or Tie In Work	10	0	254
Service Considerations	10	0	265

Project duration for non-concurrent activities in days: 265

I concur with the above schedule.

*Ken Hildebrandt 8/14/25*

Ken Hildebrandt  
Tucker City Engineer