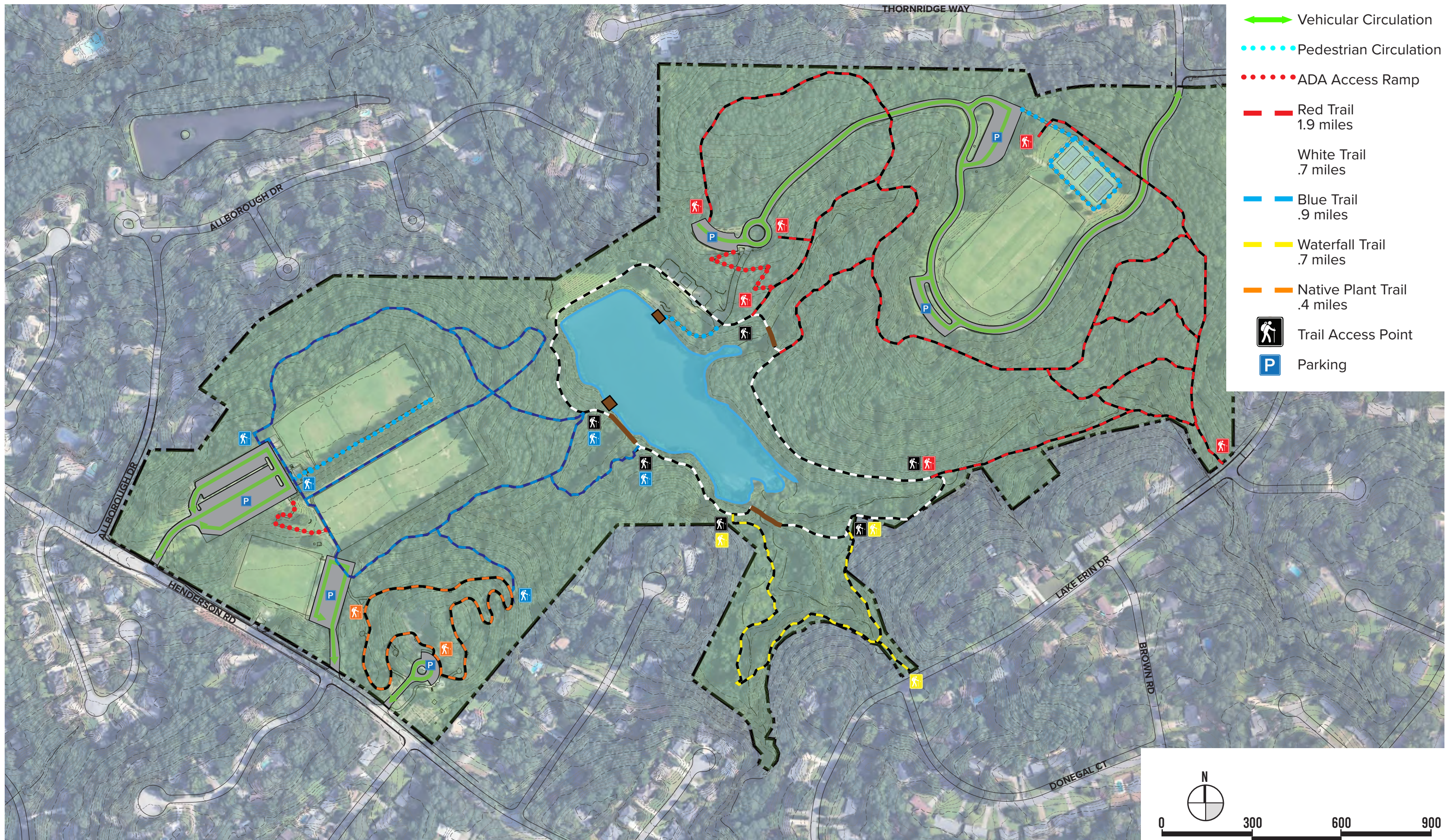


# CIRCULATION



- ← Vehicular Circulation
- ⋯ Pedestrian Circulation
- ⋯ ADA Access Ramp
- Red Trail  
1.9 miles
- White Trail  
.7 miles
- Blue Trail  
.9 miles
- Waterfall Trail  
.7 miles
- Native Plant Trail  
.4 miles
- Trail Access Point
- P Parking