



Henderson Park Master Plan

Project Update

June 22, 2026



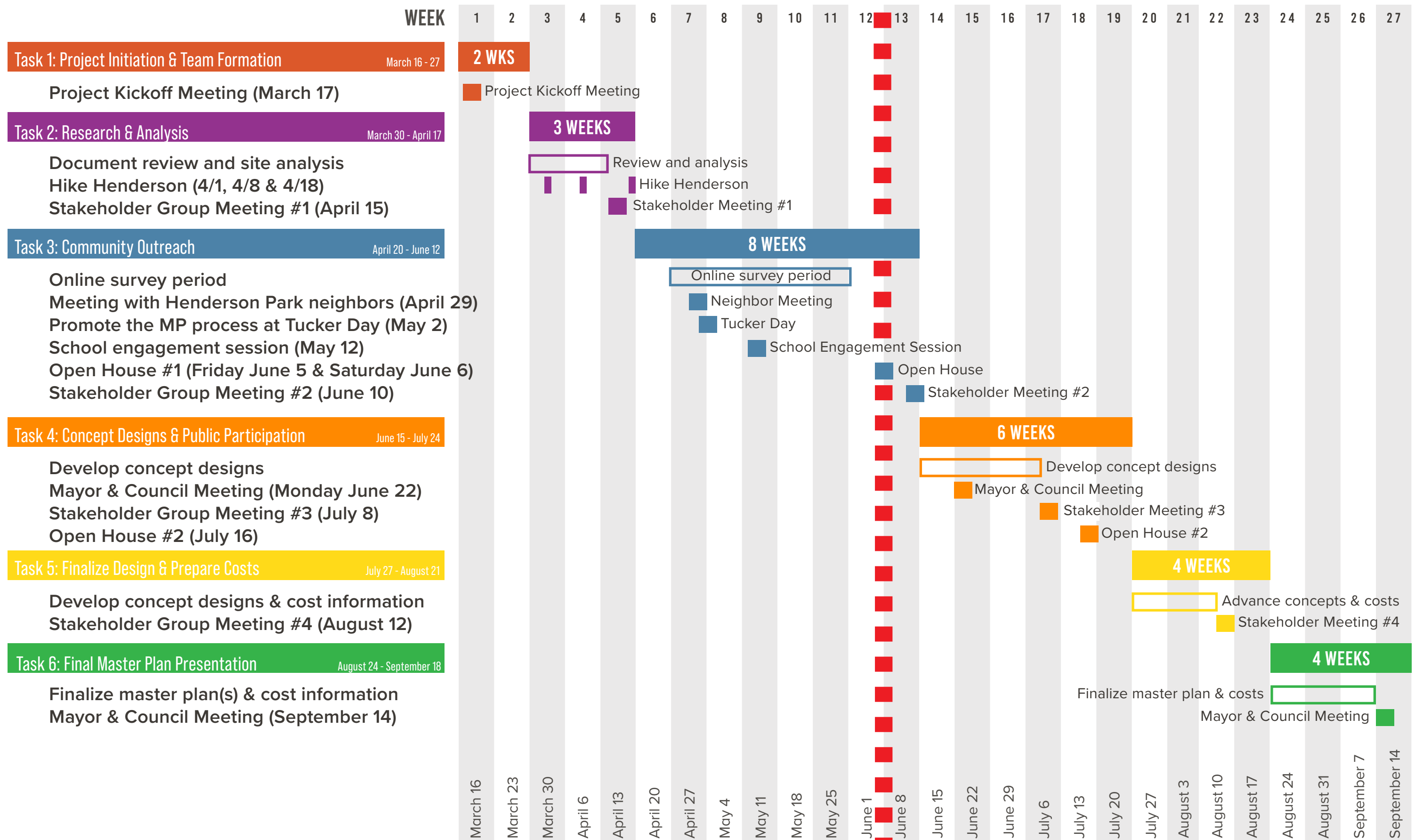


What makes Henderson Park?



Engage and Understand

Plan and Design





Conversations about Henderson Park



April 1st, 2026

Hike Henderson #1

West Side Walk
Total Attendees: 30+/-

Hike Henderson #2

East Side Walk
Total Attendees: 35+/-

April 8th, 2026



April 18th, 2026

Hike Henderson #3

Play Focus
Total Attendees: 120+/-

Meeting with Park Neighbors

Over 130 in attendance





Engaging our Minecraft Experts



Livsey Elementary Fourth Grade Students



Tucker Day

Spoke to over 200 residents



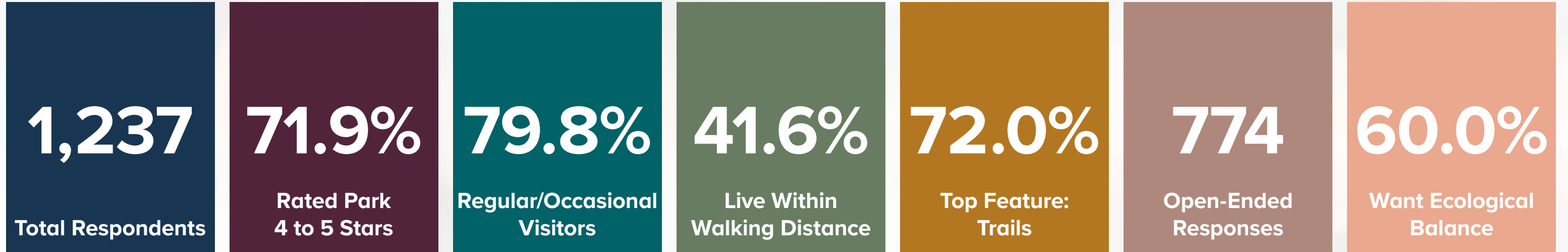


**Protect the woodland and lake,
defining character pieces of the park**

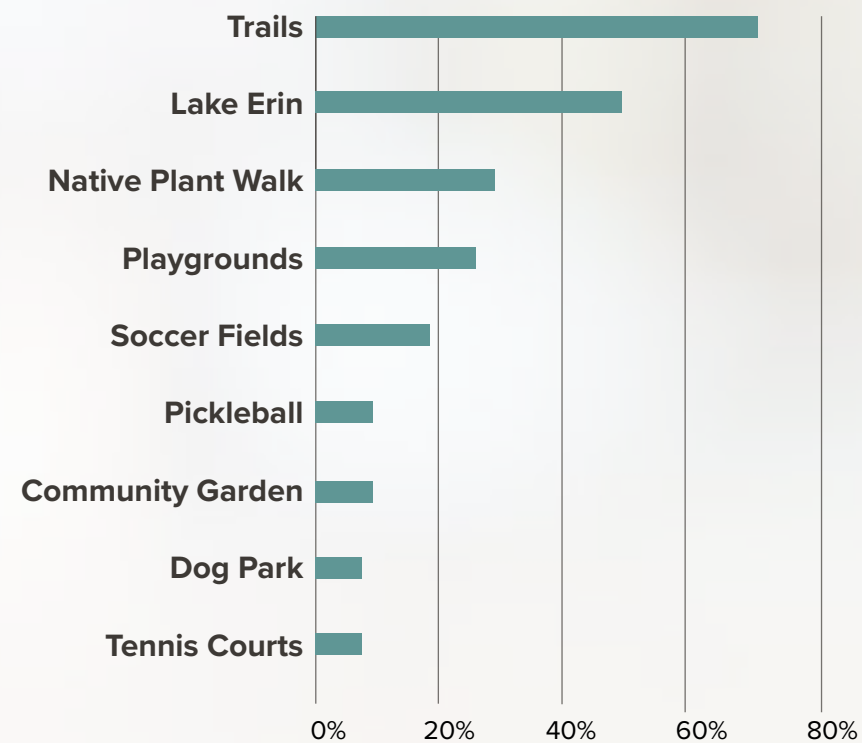
**Keep active uses to the east and
west edges of the park**

What did we learn?

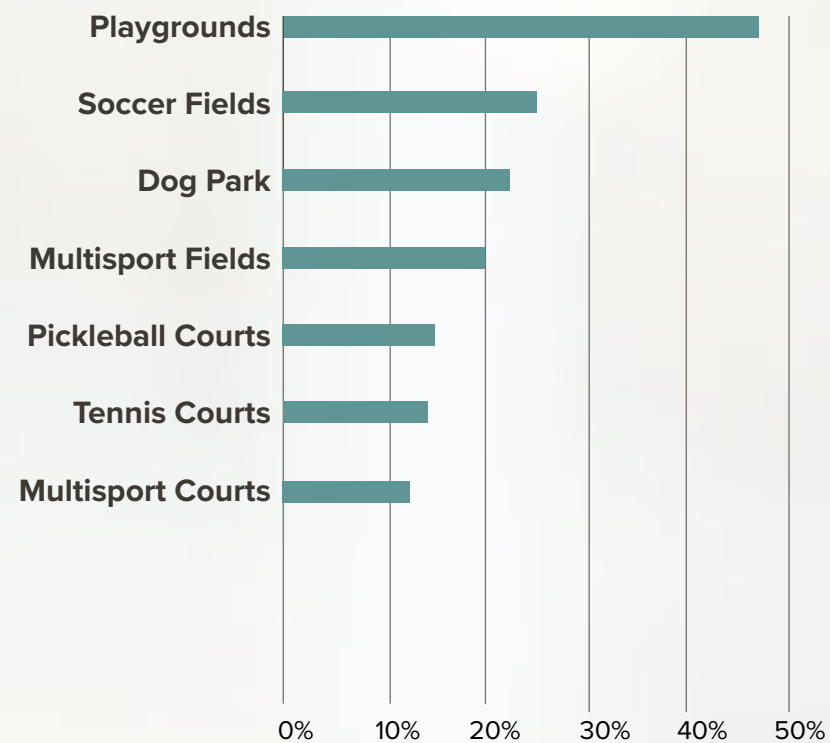
Online Survey Results



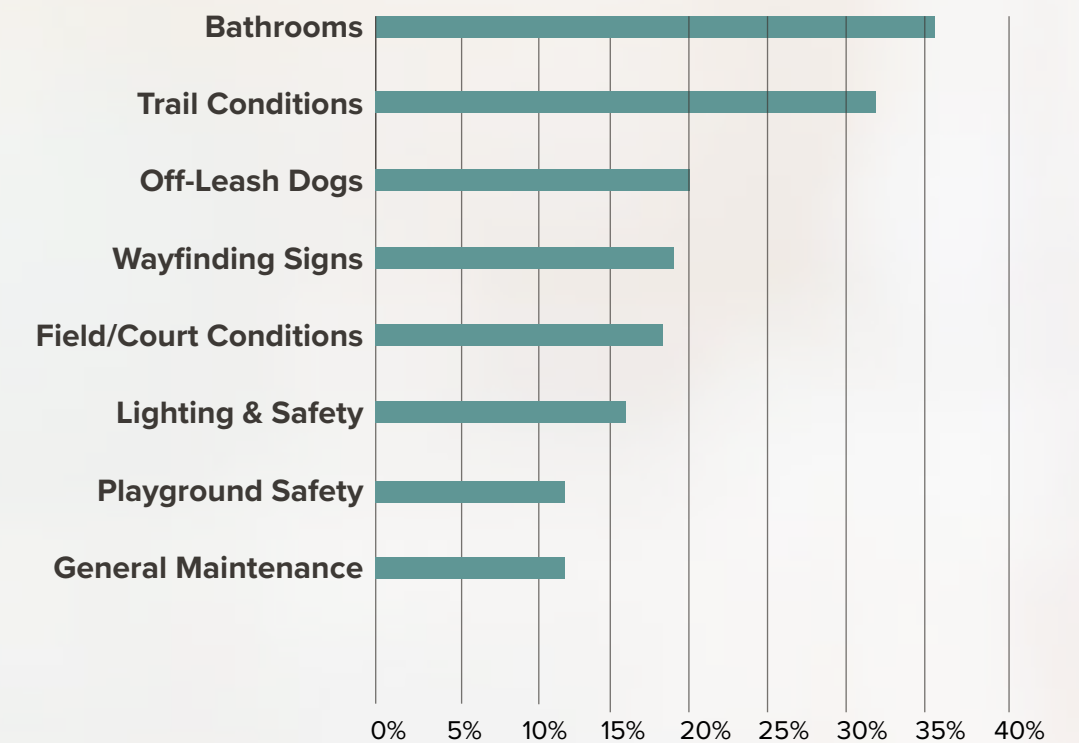
Favorite Park Features



Active/Sport/Play Priorities



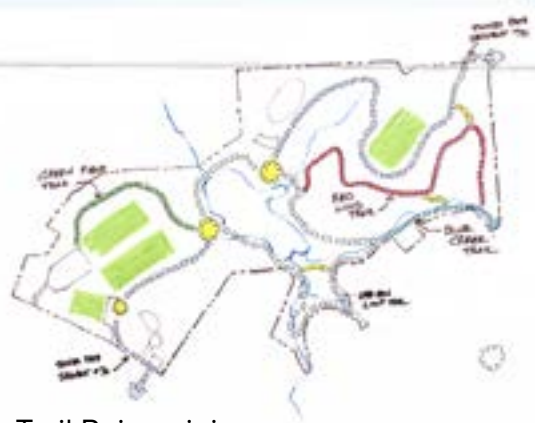
Biggest Concerns



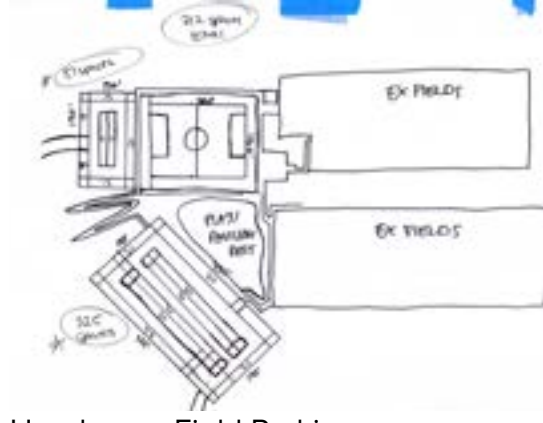
Themes from the Survey

- 1. Preserve the natural character of the park**
- 2. Improve the maintenance of the park**
- 3. Keep active elements to the East and West sides of the park**
- 4. Improve signage and wayfinding**
- 5. Restore play areas in the park**

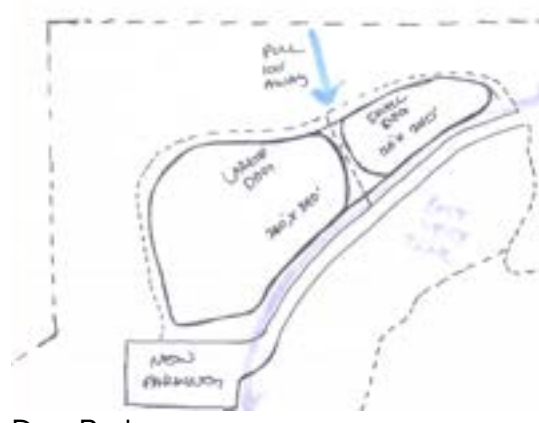
Open House #1



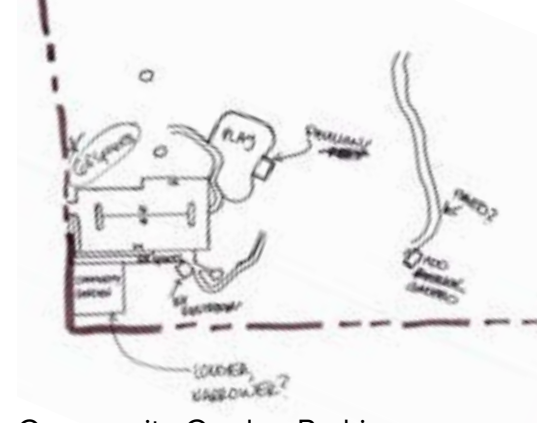
Trail Reimagining



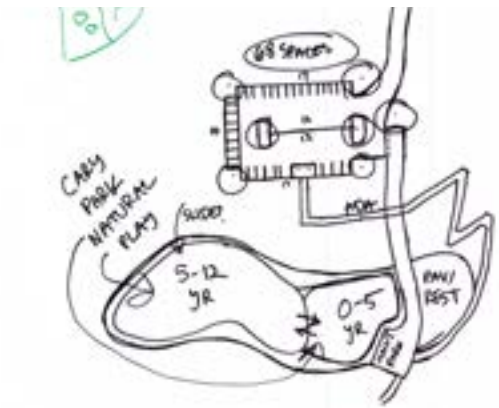
Henderson Field Parking



Dog Park



Community Garden Parking



Lake Erin Play Area



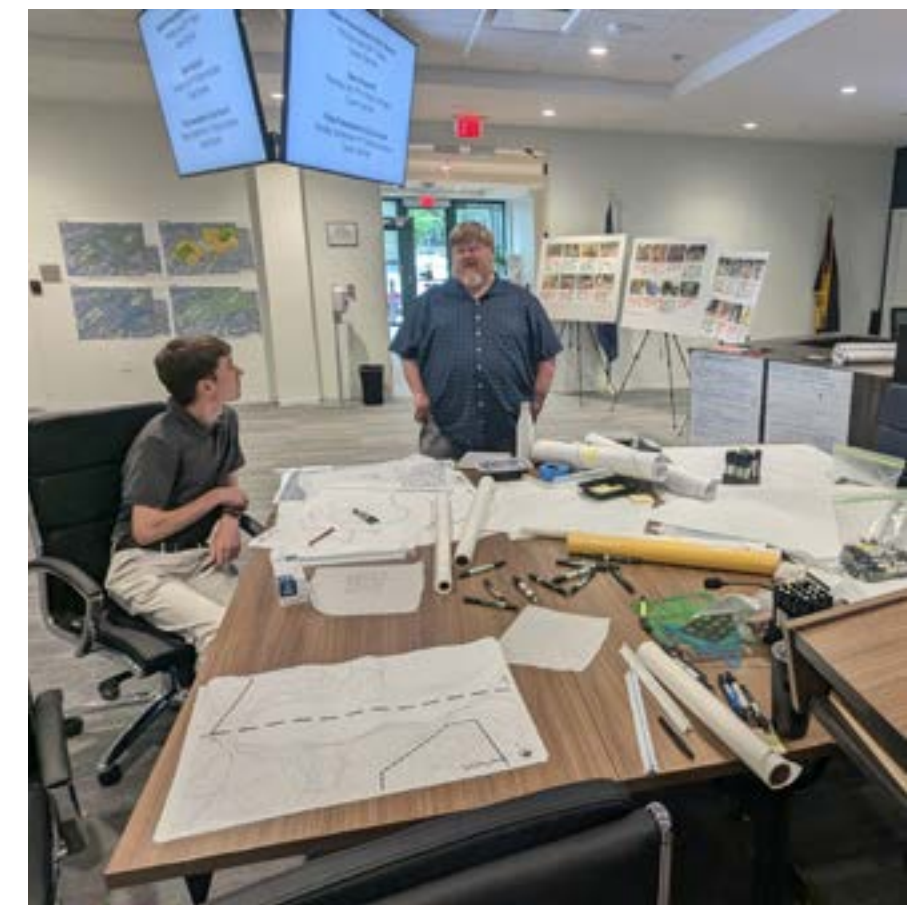
Lake Erin Waterfront



Pickleball - 6 courts



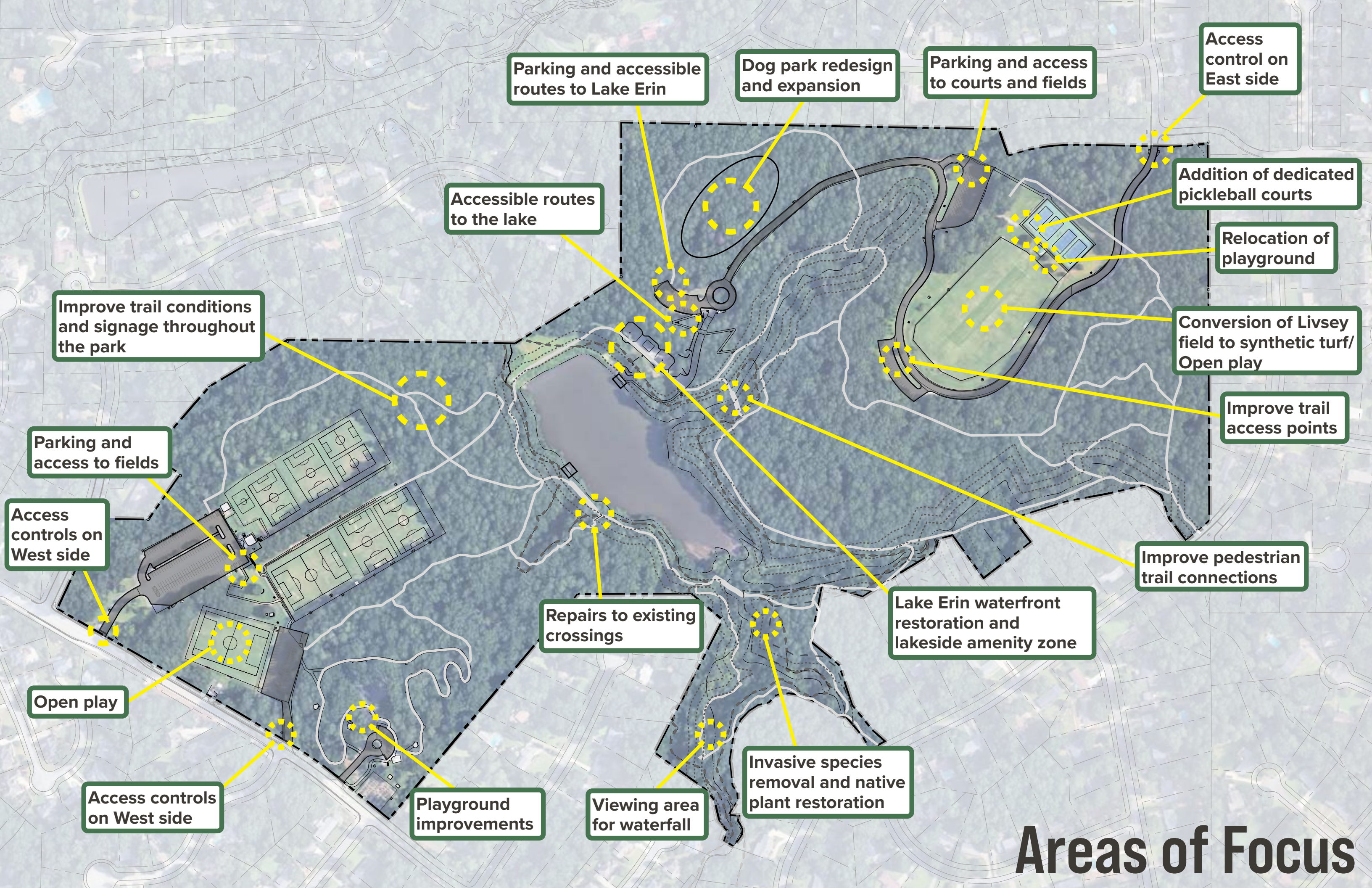
Pickleball - 8 courts



Design Principles

- **Protect and manage the park's natural identity**
- **Prioritize maintenance of existing assets**
- **Invest in essential infrastructure**
- **Add and improve recreational facilities**





Parking and accessible routes to Lake Erin

Dog park redesign and expansion

Parking and access to courts and fields

Access control on East side

Accessible routes to the lake

Addition of dedicated pickleball courts

Relocation of playground

Improve trail conditions and signage throughout the park

Conversion of Livsey field to synthetic turf/ Open play

Improve trail access points

Parking and access to fields

Improve pedestrian trail connections

Access controls on West side

Repairs to existing crossings

Lake Erin waterfront restoration and lakeside amenity zone

Open play

Access controls on West side

Playground improvements

Viewing area for waterfall

Invasive species removal and native plant restoration

Areas of Focus

- ① Parking
- ② Paved Accessible Path
- ③ Unpaved Trail
- ④ Large Pavilion
- ⑤ Play Area (ages 5-12)
- ⑥ Open Lawn
- ⑦ Play Area (ages 0-5)
- ⑧ Small Pavilion & Restrooms
- ⑨ Accessible Parking
- ⑩ Bridge
- ⑪ Shore Restoration Plantings
- ⑫ Boardwalk
- ⑬ Lakeside Pavilion
- ⑭ West Property Line



Entry form the North

Restored Dam

Lake Erin

(Early Concept Plan)
Lakeside Amenity

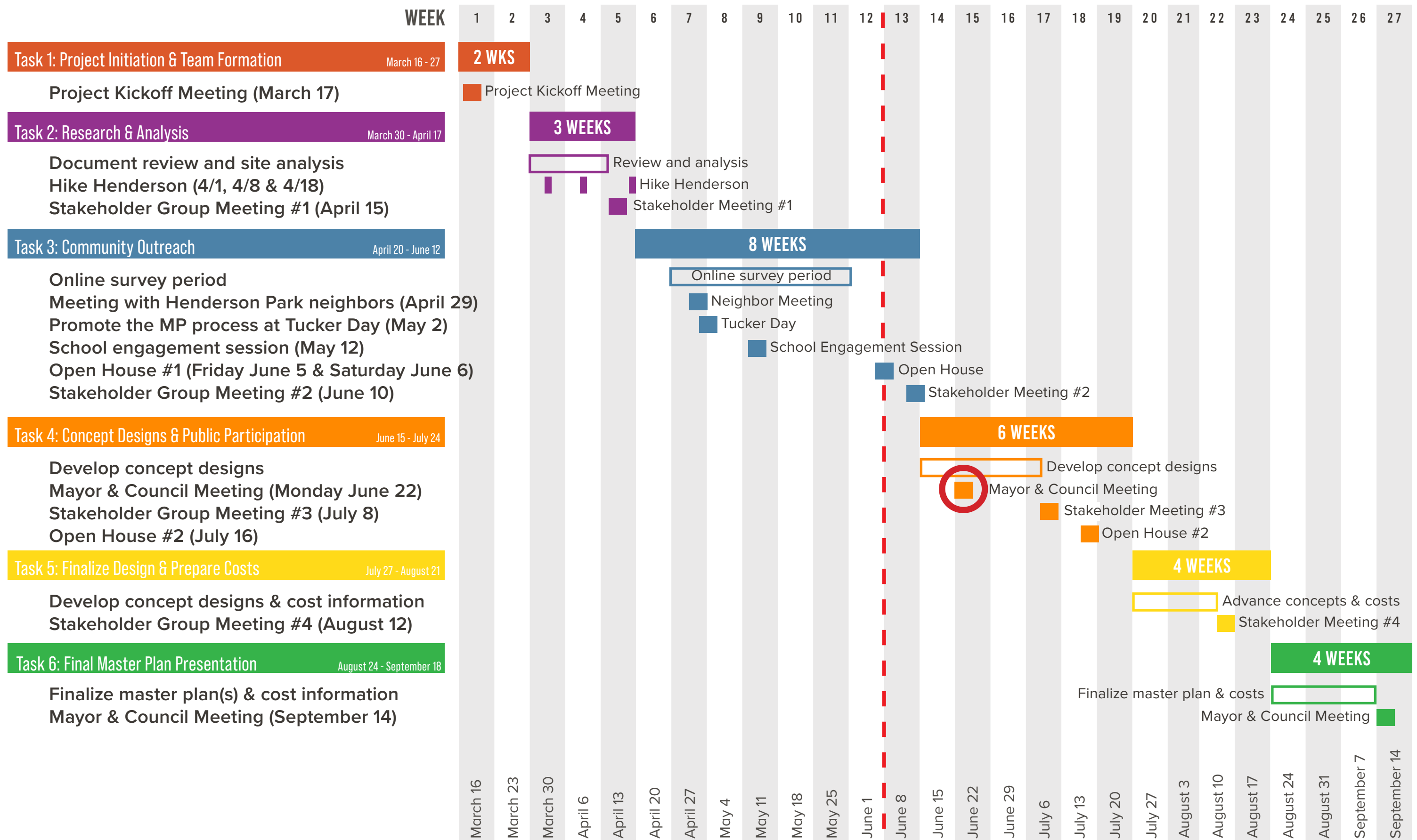
Operational Areas of Focus

- **Establish a comprehensive park maintenance program**
- **Develop a park rules and security protocol**
- **Create a reservation system for courts, fields and pavilions**



Engage and Understand

Plan and Design



Next Steps



**Advancing the
Areas of Focus**

**Open House #2
July 16th
6:30-8:00 pm**

A photograph of a forest stream flowing over a rocky bed. The water is clear and shallow, surrounded by lush green trees and foliage. The scene is peaceful and natural. Overlaid on the center of the image is the text 'THANK YOU' in a bold, white, sans-serif font. To the left of the text is a yellow L-shaped graphic element.

THANK YOU